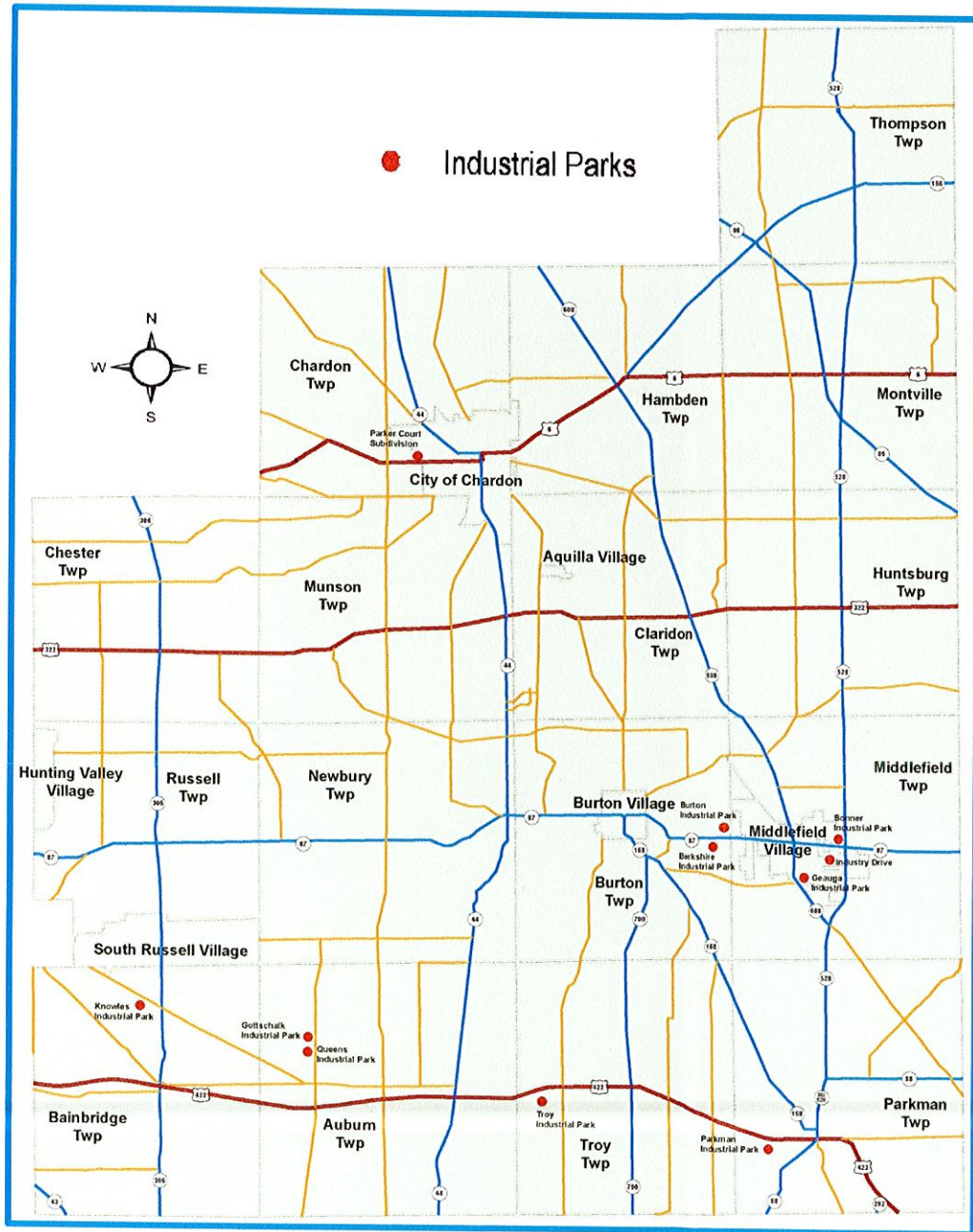


INDUSTRIAL PARK LOCATIONS



GEAUGA COUNTY, OHIO

Industrial Park Locations Geauga County, Ohio



- Industrial Parks
- County Road
- State Road
- U.S. Road

Map Prepared By: Geauga County Planning Commission
March 2005

Revised: August 2005, February 2017

Geauga County assumes no legal responsibility for this information.

Vacant Industrial Park Land, Geauga County, Ohio

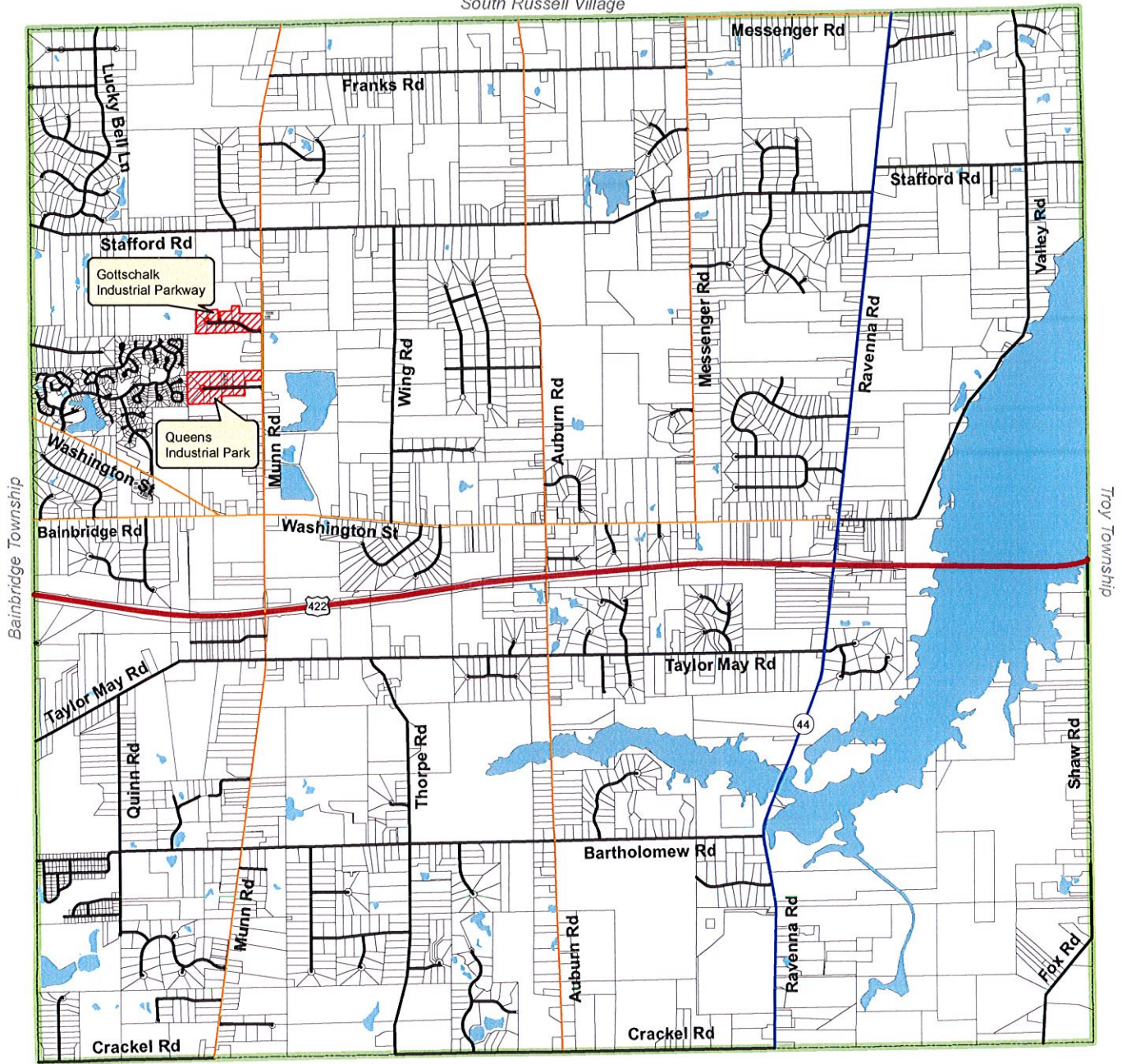
Property	Number of Vacant Lots	Sublot/Parcel Numbers	Parcel Sizes	Zoned	Contact
Gottschalk Industrial Park Auburn Twp, Ohio	4	Sublots: 8, 11 Parcels: 01-118986 01-118987	1.50 – 5.56 Acres	General Industrial	Ed Gottschalk 440-247-7990
	Not subdivided	Phase 2	18.99 Acres total	General Industrial	
Queens Industrial Park Auburn Twp, Ohio	1	Sublot: 5A Parcel: 01-118285	1.50 Acres	General Industrial	Dale Haberny 440-543-9054
Knowles Industrial Park Bainbridge Twp, Ohio	1	Parcel: 03-019108	1.67 Acres	Light Industry Restricted	Tim Leciejewski 216-401-4705
Burton Industrial Park Burton Twp, Ohio	9	Sublots: 1–9 Parcels: 04-132916 04-132917 04-132915 04-132918 04-132914 04-132919 04-132913 04-132912 04-132911	3.01 – 4.04 Acres	Industrial Office	Tom Blair 440-537-3667
Parker Court Industrial Park City of Chardon, Ohio	1	Sublot: 8 Parcel: 10-157000	29.38 Acres	Industrial	Robert E. Cseplo 440-286-7411
Bonner Industrial Park Middlefield Village, Ohio	2	Sublots: 6–7 Parcels: 19-080079 19-080078	3.50 – 4.53 Acres	Planned Unit Industrial Development	Gold Key Processing, LTD 440-632-0901
Gauga Industrial Park Middlefield Village, Ohio	5	Parcels: 19-043400 19-071472 19-080856 19-014740 19-014800	10.86 – 48.57 Acres	Industrial	David Ford 216-272-7276
Industry Drive Middlefield Village, Ohio	2	Parcels: 19-080933 19-081107	8.62 – 26.30 Acres	Industrial	Dick Bonner 440-632-3308
Parkman Industrial Park Parkman Twp, Ohio	36	Sublots: 7–11, 15–18, 20–21, 23 –27, 32–47, 50–51, 53–54	1.50 – 3.25 Acres	Industrial	Don R. Hofstetter 440-548-4111
Troy Industrial Park Troy Twp, Ohio	3	Sublots: 1, 7, 8 Parcels: 32-072320 32-072326 32-072327	5.16 – 9.23 Acres	General Industry	Russ Mullins 440-834-2500

*When only a parcel number is indicated and no sublot number, the parcel was vacated from the original platted industrial park.

The Geauga County Planning Commission makes no warranties as to the completeness or accuracy of the information contained herein.

Revised: July 2017

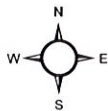
South Russell Village



PORTAGE COUNTY

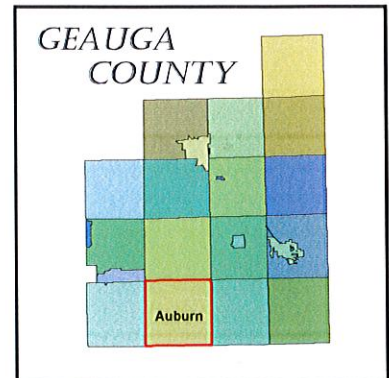
Auburn Township

Industrial Park Locations Geauga County, Ohio



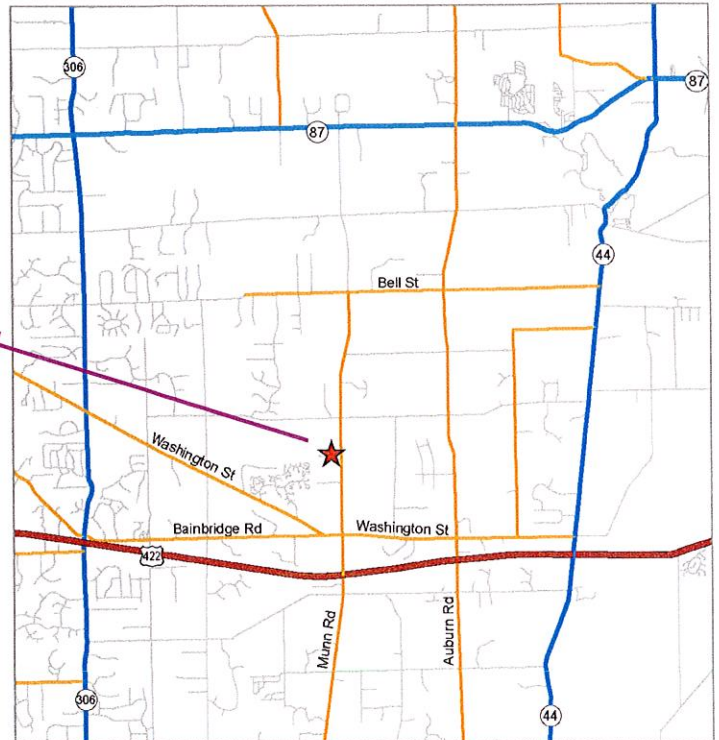
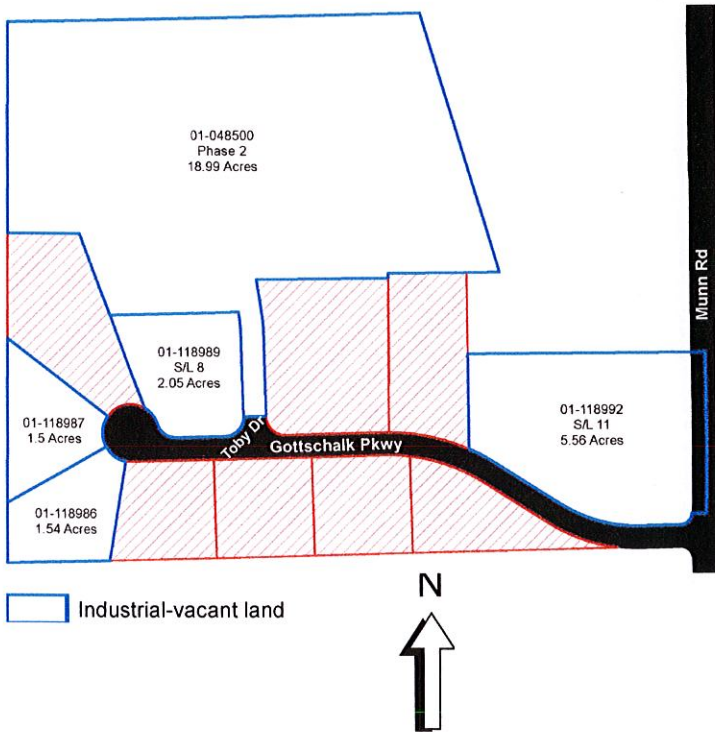
-  County Road
-  State Road
-  U.S. Road
-  Industrial Park

Map Prepared By: Geauga County Planning Commission
 March 2005
 Revised: October 2005, December 2016
 Source: Geauga County Auditor
 Geauga County assumes no legal responsibility
 for this information.



GOTTSCHALK INDUSTRIAL PARK

Auburn Township,
Geauga County, Ohio



CONTACTS

Auburn Township: 440-543-1660
admin@auburntownship.com

County Departments:

Building Department: 440-279-1780
Lmoriarty@co.geauga.oh.us
CED (Comm. & Econ. Dev.): 440-279-1790

Kconrad@geaugaced.com
Water Resources: 440-279-1970
info@gcdwr.org

Planning Commission: 440-279-1740
ddietrich@co.geauga.oh.us

Geauga SWCD: 440-834-1122
gcsxcd@geaugaswcd.com

Electric/Natural Gas/Telephone/ Broadband:

Dominion Energy: 1800-362-7557
The Illuminating Co.: 1800-589-3101
Windstream: 330-299-1094
AT&T: 440-352-7300
Suddenlink: 877-794-2724

Industrial Park Amenities:

Zoned: General Industrial

Lot Sizes: 1.5-18.99 acres

Vacant Lots: 4

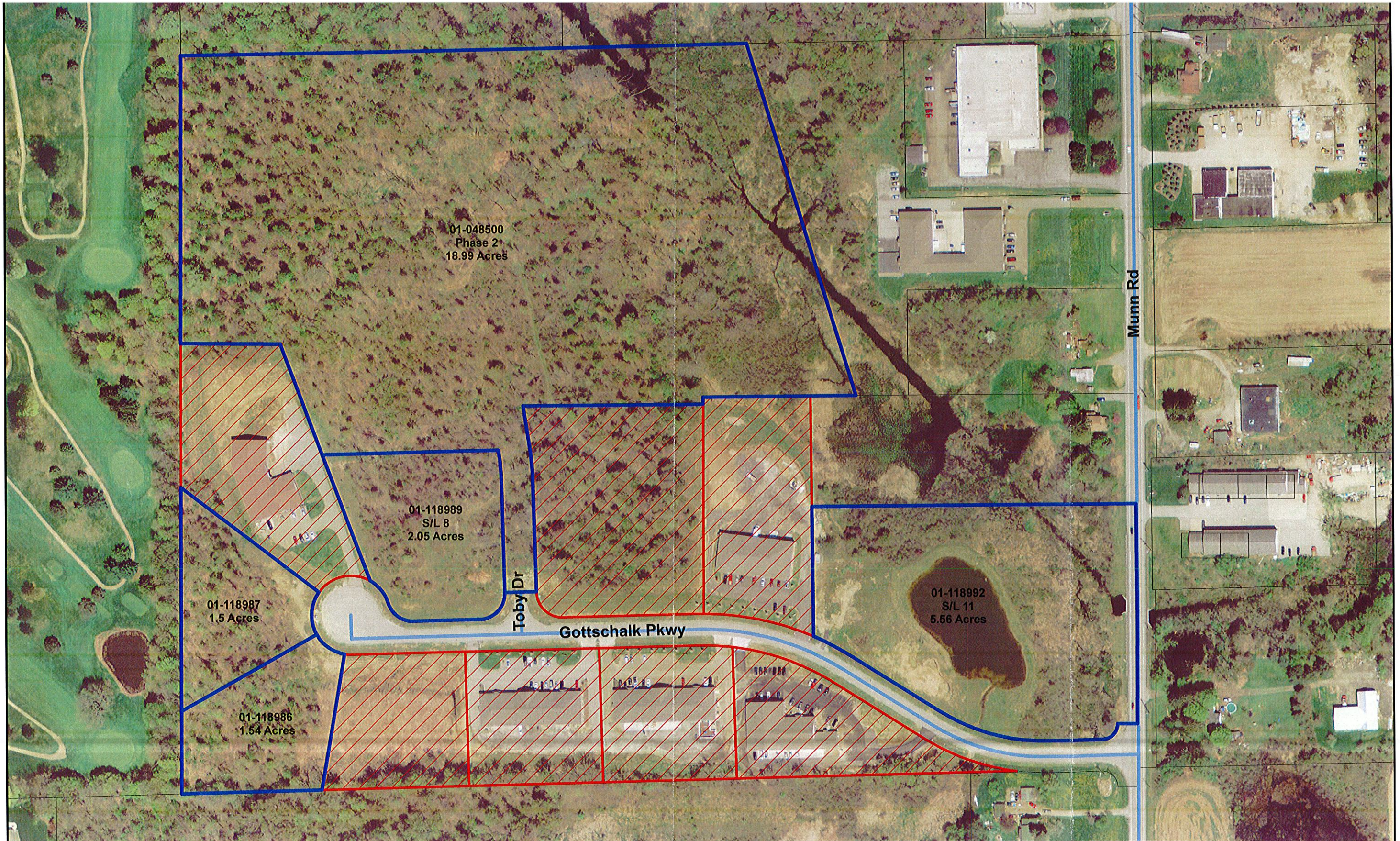
Sublots: 8,11

Parcels: 01-118986, 01-118987

Contact: Ed Gottschalk, Owner
440-247-7990

Transportation:

Access to major routes (US-422, US-322,
I-480, SR-44, SR-87, SR-528)



 Industrial-vacant land

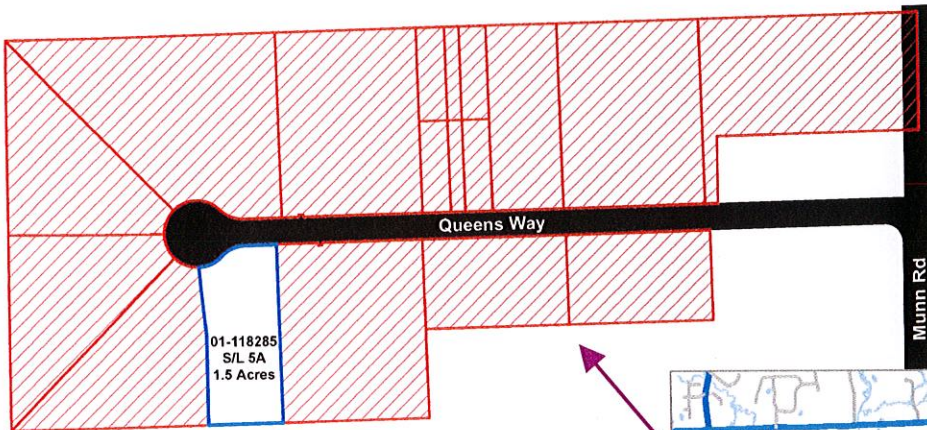
Gottschalk Industrial Park

Auburn Township
Geauga County, Ohio

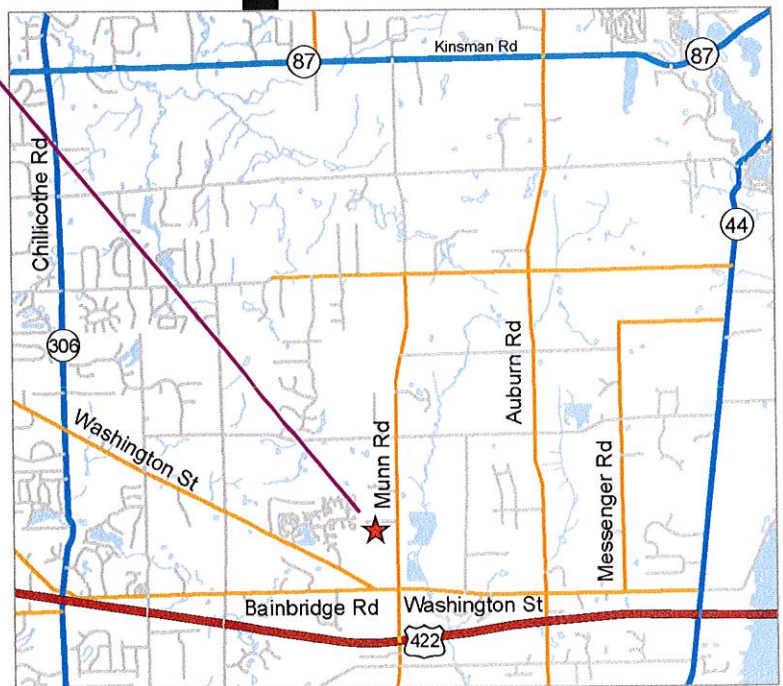
Map prepared by: Geauga County Planning Commission,
May 2017
Source: Geauga County Auditor
Geauga County assumes no legal responsibility
for this information.

QUEENS INDUSTRIAL PARK

Auburn Township,
Geauga County, Ohio



Industrial-vacant land



CONTACTS

Auburn Township: 440-543-1660

admin@auburntownship.com

County Departments:

Building Department: 440-279-1780

Lmoriarty@co.geauga.oh.us

CED (Comm. & Econ. Dev.): 440-279-1790

Kconrad@geaugaced.com

Water Resources: 440-279-1970

info@gcdwr.org

Planning Commission: 440-279-1740

ddietrich@co.geauga.oh.us

Geauga SWCD: 440-834-1122

gcsxcd@geaugasxcd.com

Electric/Natural Gas/Telephone/

Broadband:

Dominion Energy: 1800-362-7557

The Illuminating Co.: 1800-589-3101

Windstream: 330-299-1094

AT&T: 440-352-7300

Suddenlink: 877-794-2724

Industrial Park Amenities:

Zoned: General Industrial

Lot Sizes: 1.5 acres

Vacant Lots: 1

Sublot: 5A

Parcels: 23-302500

Contact: Dale Haberny, Owner
440-534-9054

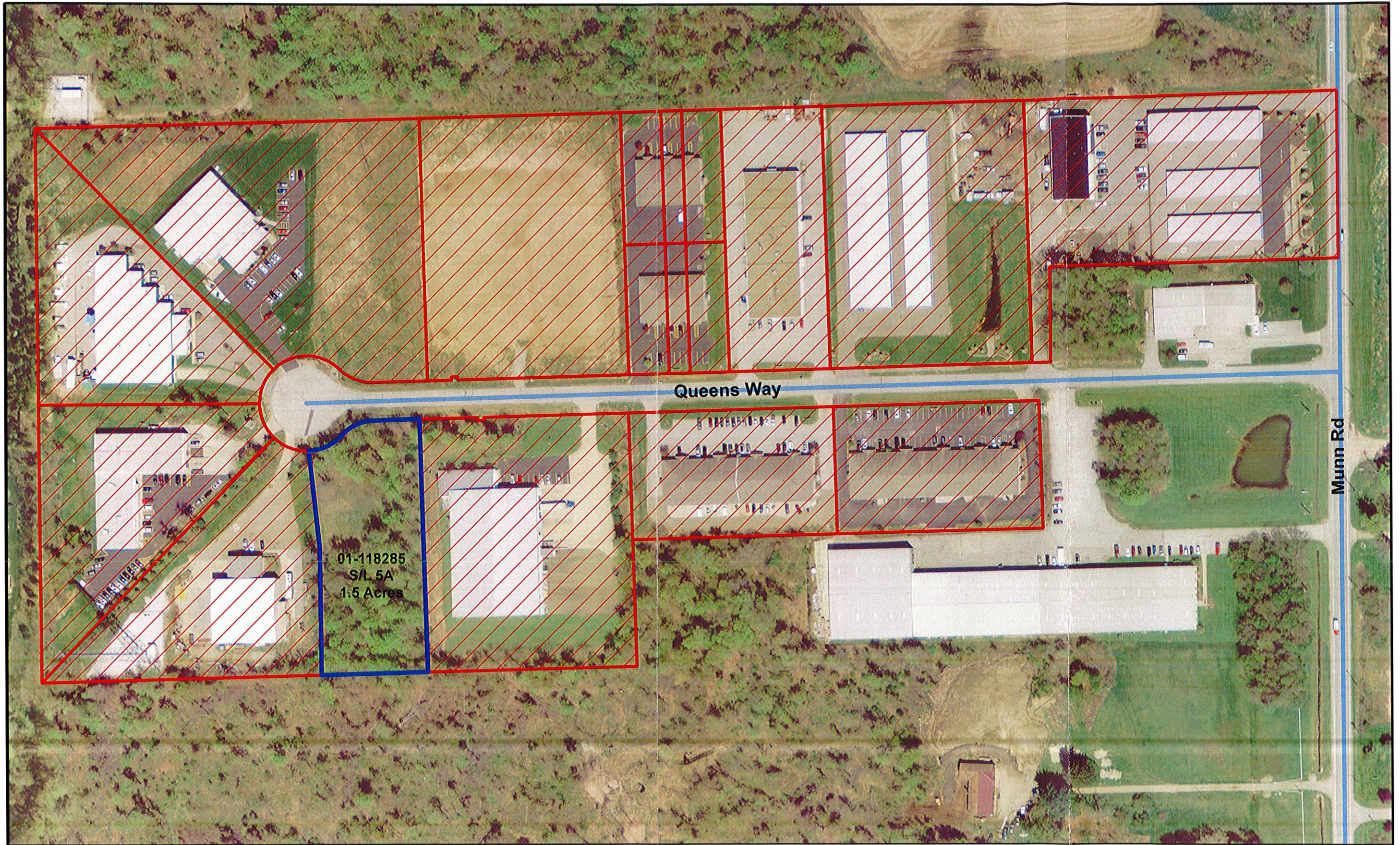
Transportation:

Access to major routes (US-422, US-322,
I-480, SR-44, SR-87, SR-528)

Map Prepared By:

Geauga County Planning Commission, May 2017

Geauga County assumes no legal responsibility for this information.

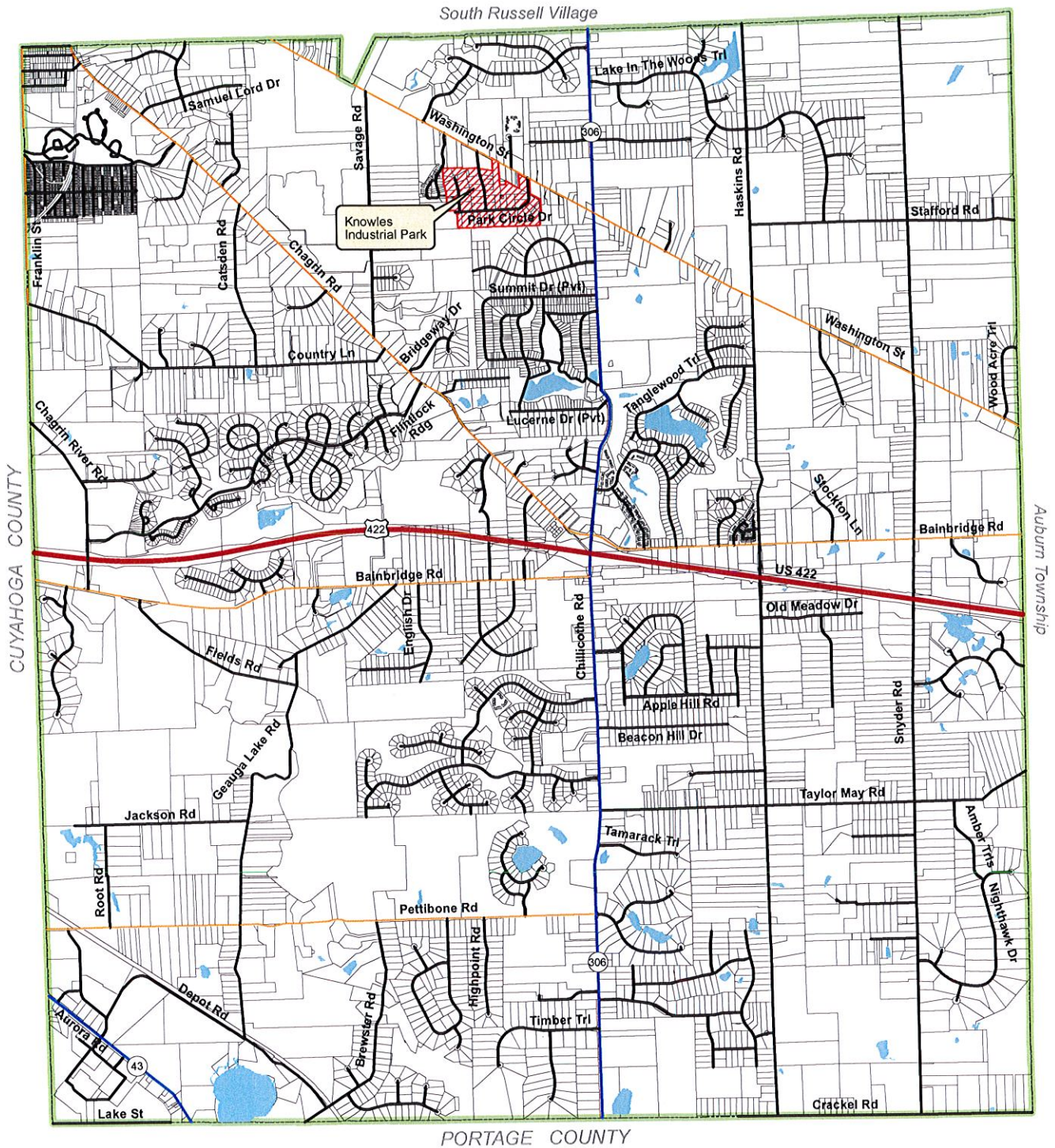


 Industrial-vacant land

Queens Industrial Park

Auburn Township
Geauga County, Ohio

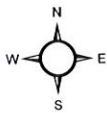
Map prepared by: Geauga County Planning Commission,
May 2005
Revised: May 2017
Source: Geauga County Auditor
Geauga County assumes no legal responsibility
for this information.



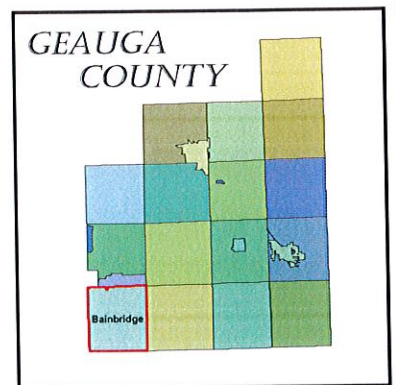
Bainbridge Township

Industrial Park Location
Geauga County, Ohio

-  County Road
-  State Road
-  U.S. Road
-  Industrial Park

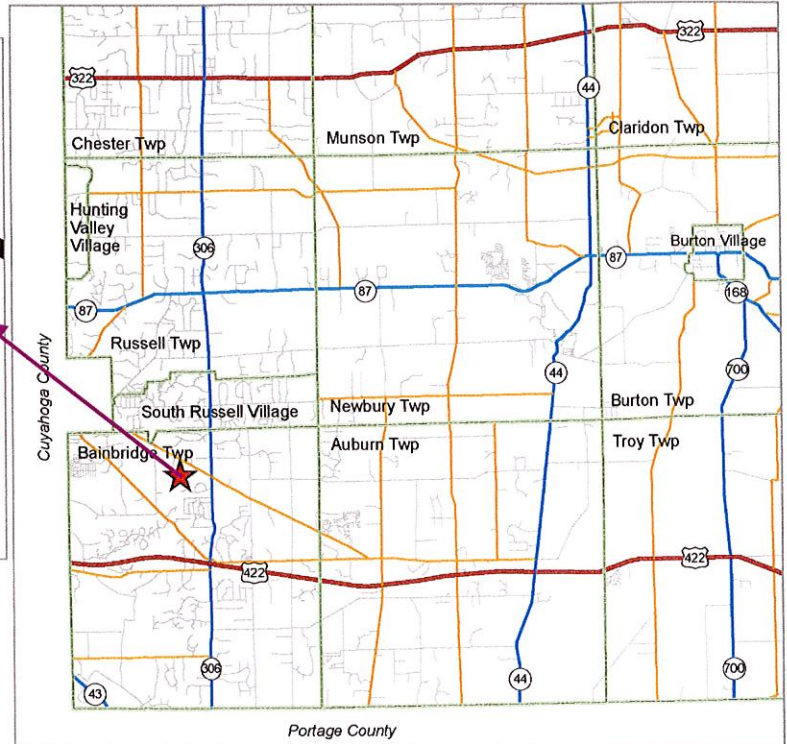
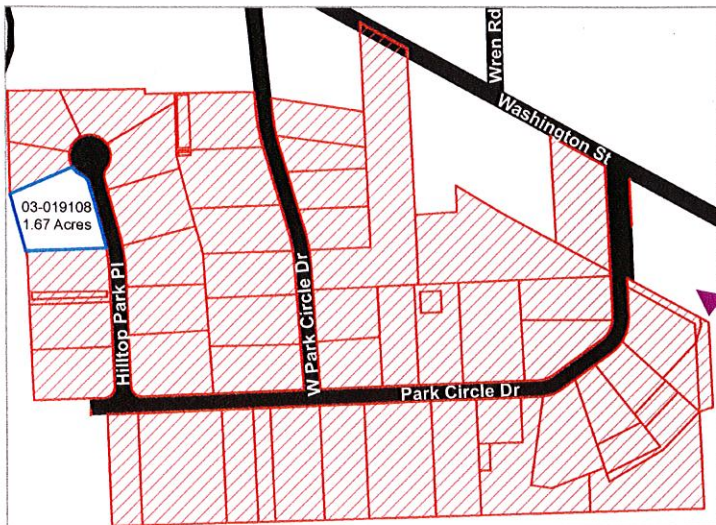


Map Prepared By: Geauga County Planning Commission
March 2005
Revised: September 2005, October 2005, November 2016
Source: Geauga County Auditor
Gauga County assumes no legal responsibility
for this information.



KNOWLES INDUSTRIAL PARK

Bainbridge Township,
Geauga County, Ohio



CONTACTS

Bainbridge Township: 440-543-9871
townhall@bainbridgetwp.com
County Departments:
Building Department: 440-279-1780
Lmoriarty@co.geauga.oh.us
CED (Comm. & Econ. Dev.): 440-279-1790
Kconrad@geaugaced.com
Water Resources: 440-279-1970
info@gcdwr.org
Planning Commission: 440-279-1740
ddietrich@co.geauga.oh.us
Geauga SWCD: 440-834-1122
gcsxcd@geaugaswcd.com
**Electric/Natural Gas/Telephone/
Broadband:**
Dominion Energy: 1800-362-7557
First Energy: 1800-589-3101
Windstream: 330-299-1094
AT&T: 440-352-7300
Spectrum: 866-874-2389

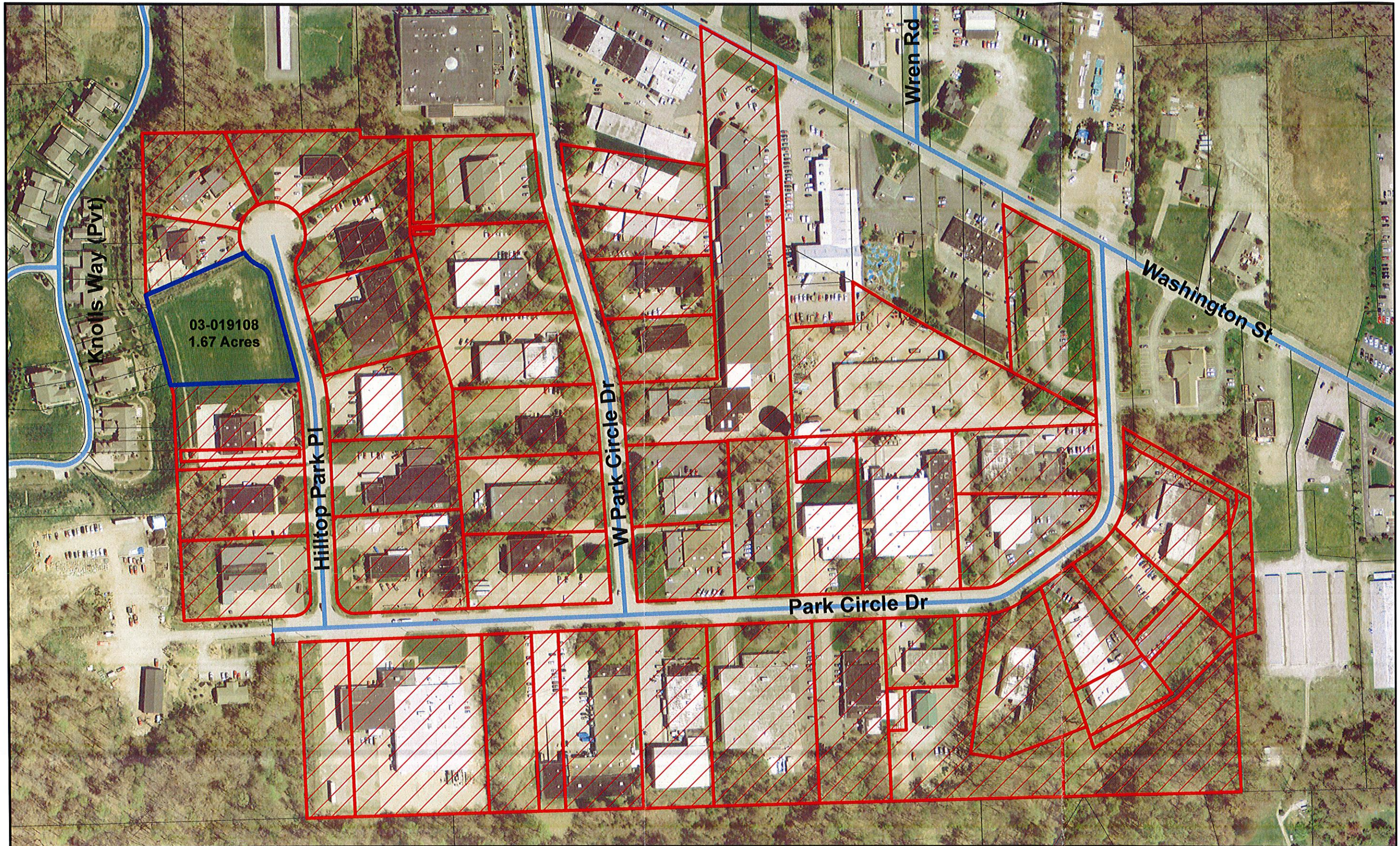
Industrial Park Amenities:

Zoned: Light Industry Restricted
Lot Size: 1.67 acres
Vacant Lots: 1
Parcel: 03-019108
Contact: Tim Leciejewski, Owner
216-401-4705

Transportation:

Access to major routes (US-422, US-322,
I-480, SR-44, SR-87, SR-528)

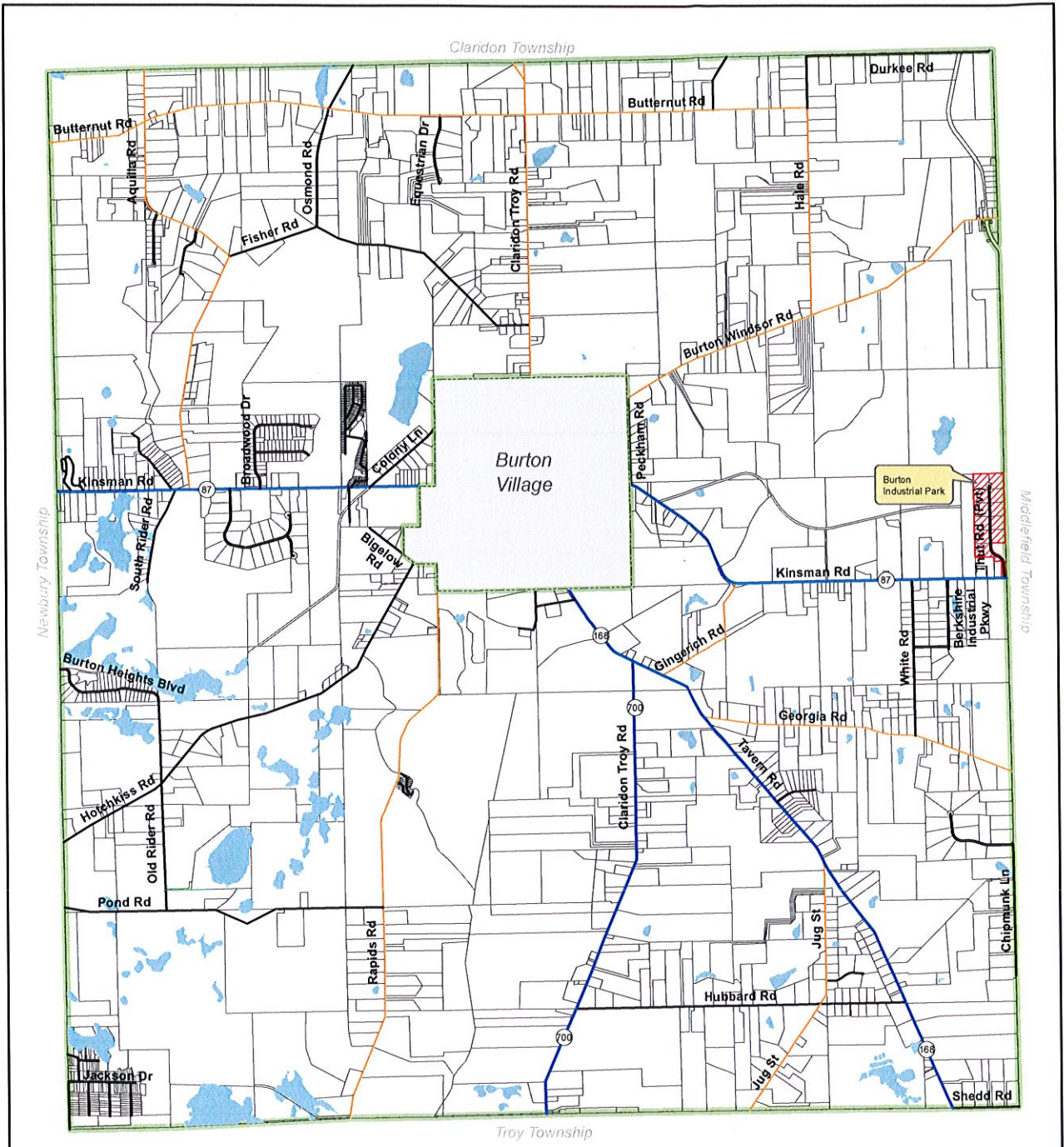
Map Prepared By:
Geauga County Planning Commission, May 2017
Geauga County assumes no legal responsibility for this information.



 Industrial-vacant land

Knowles Industrial Park
 Bainbridge Township
 Geauga County, Ohio

Map prepared by: Geauga County Planning Commission
 May 2005
 Revised: October 2016
 Source: Geauga County Auditor
 Geauga County assumes no legal responsibility
 for this information.



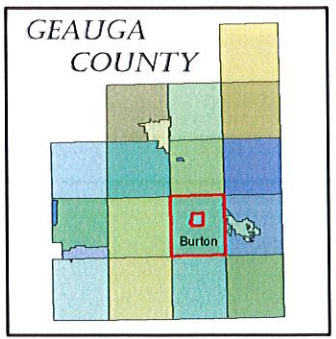
- County Road
- State Road
- Industrial Park
- Burton Township

Burton Township

Industrial Park Locations

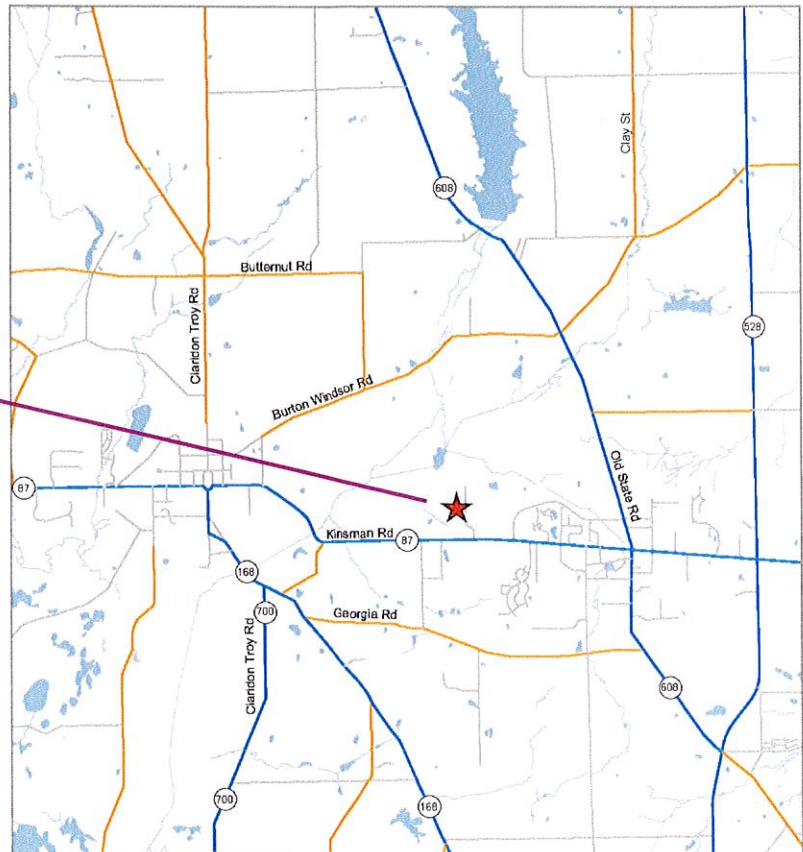
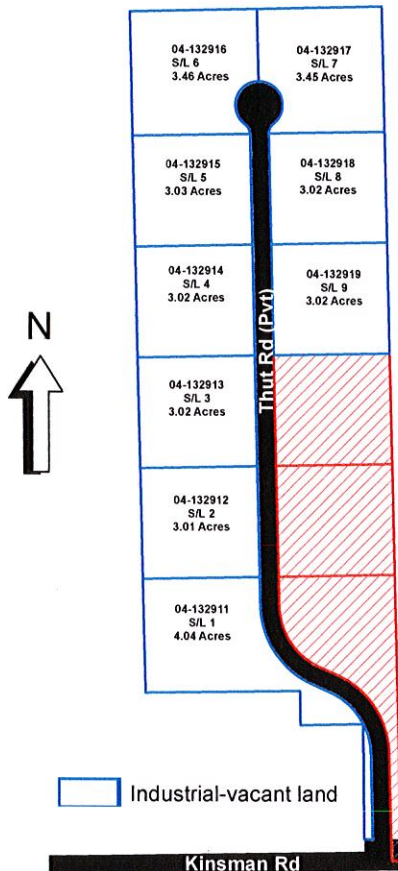
Geauga County, Ohio

Map Prepared By: Geauga County Planning Commission
 March 2005
 Revised: October 2005, March 2017
 Source: Geauga County Auditor
 Geauga County assumes no legal responsibility
 for this information.



BURTON INDUSTRIAL PARK

Burton Township,
Geauga County, Ohio



CONTACTS

Burton Township: 440-834-1500

Burtontownshipzoning@yahoo.com

County Departments:

Building Department: 440-279-1780

Lmoriarty@co.geauga.oh.us

CED (Comm. & Econ. Dev.): 440-279-1790

Kconrad@geaugaced.com

Water Resources: 440-279-1970

info@gcdwr.org

Planning Commission: 440-279-1740

ddietrich@co.geauga.oh.us

Geauga SWCD: 440-834-1122

gcsxcd@geaugasxcd.com

Electric/Natural Gas/Telephone/Broadband:

Dominion Energy: 1800-362-7557

The Illuminating Co.: 1800-589-3101

Windstream: 330-299-1094

Industrial Park Amenities:

Zoned: Industrial Office

Lot Sizes: 3.01-4.04 acres

Vacant Lots: 9

Sublots: 1-9

Contact: Tom Blair, Owner
440-537-3667

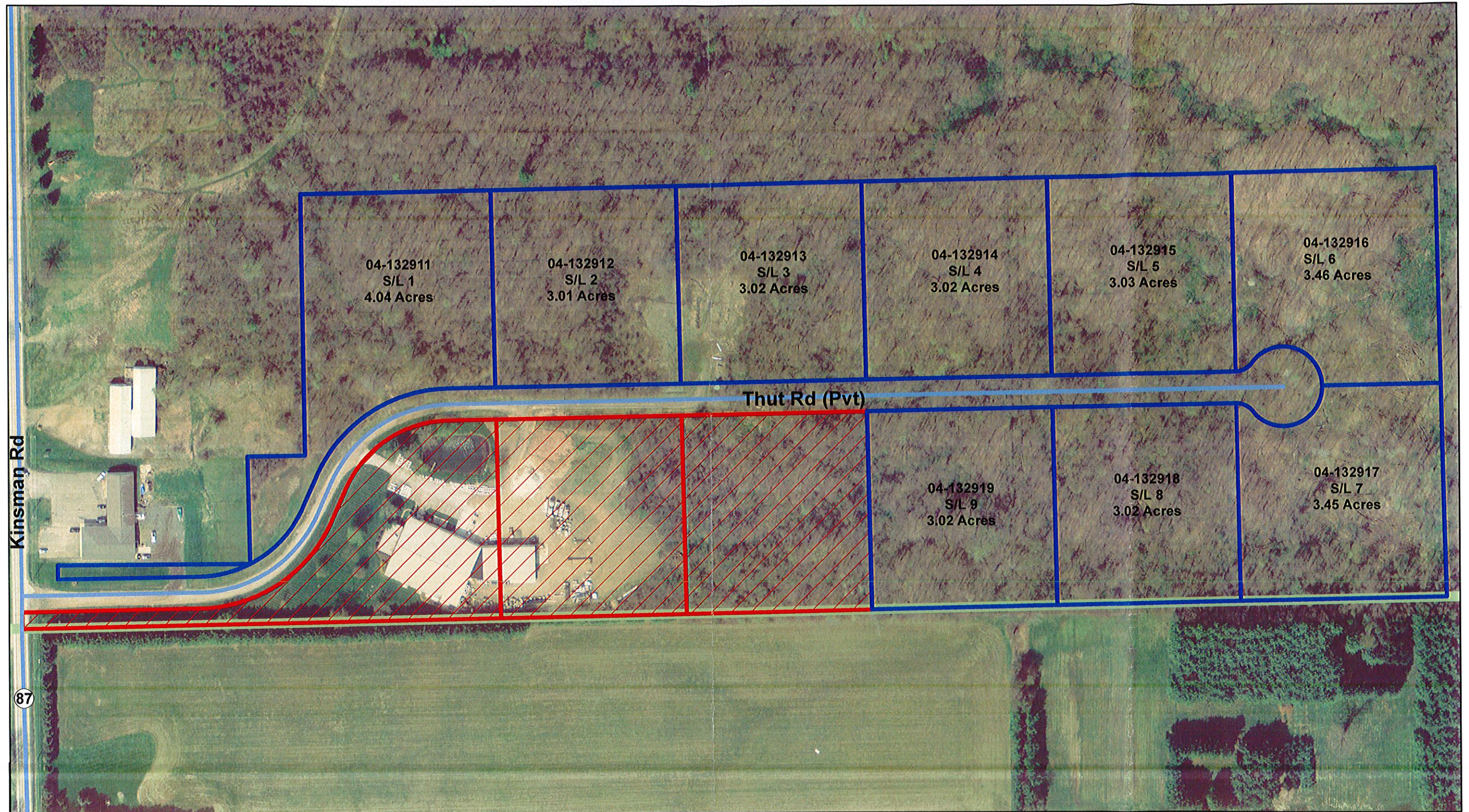
Transportation:

Access to major routes (US-422, US-322, I-480, SR-44, SR-87, SR-528)

Map Prepared By:

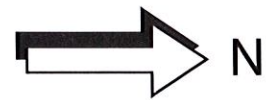
Geauga County Planning Commission, April 2017

Geauga County assumes no legal responsibility for this information.



Burton Industrial Park

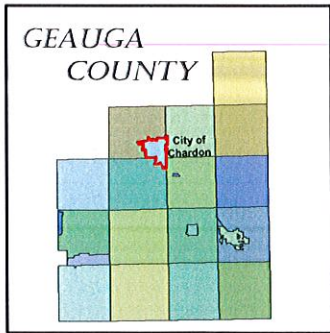
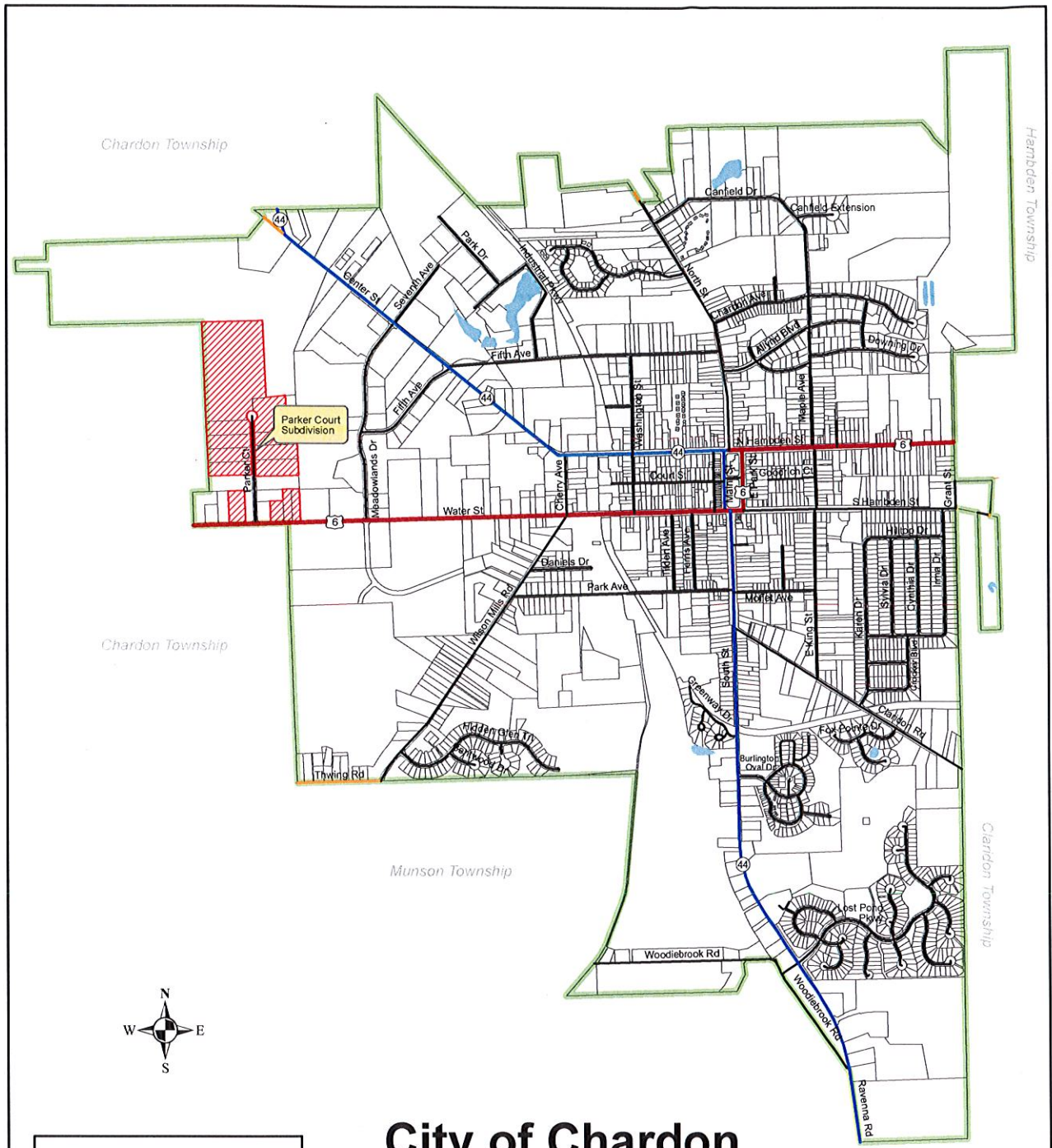
Burton Township
Geauga County, Ohio



- Industrial-vacant land
- Burton Township Boundary

Map Prepared By: Geauga County Planning Commission
April 2017

Source: Geauga County Auditor
Geauga County assumes no legal responsibility
for this information.






City of Chardon

Industrial Park Location

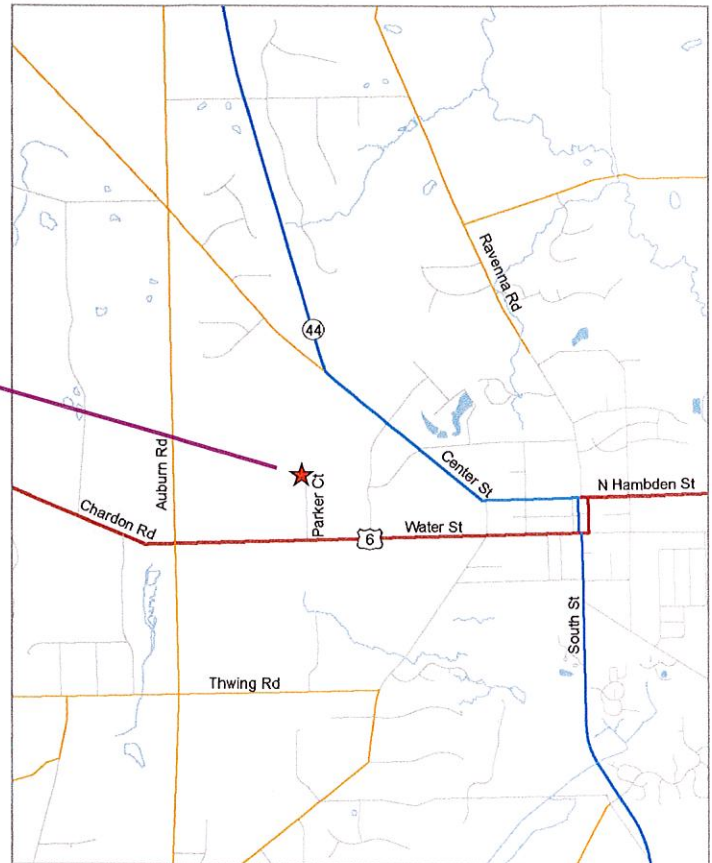
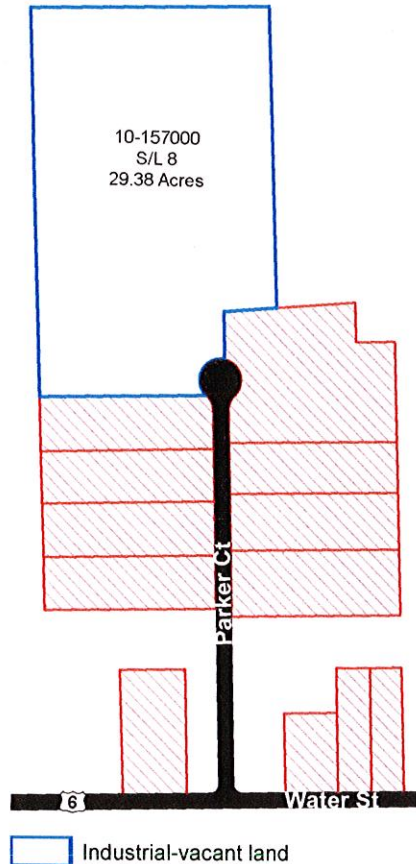
Geauga County, Ohio

Map Prepared By: Geauga County Planning Commission
 March 2017
 Source: Geauga County Auditor
 Geauga County assumes no legal responsibility
 for this information.

-  Industrial Park
-  County Road
-  State Road
-  U.S. Road

PARKER COURT INDUSTRIAL PARK

City of Chardon,
Geauga County, Ohio



CONTACTS

City of Chardon: 440-286-2654

syaney@chardoncc.com

Water Resources: 440-286-2949

bgaeta@chardon.cc

County Departments:

Building Department: 440-279-1780

Lmoriarty@co.geauga.oh.us

Geauga SWCD: 440-834-1122

gcsxcd@geaugaswcd.com

Tax Incentives: City of Chardon

440-286-2600

Electric/Natural Gas/Telephone/Broadband:

Windstream: 1800-347-1991

Spectrum: 877-772-2253

Illuminating Co: 888-544-4877

Dominion Energy: 1800-362-7557

Industrial Park Amenities:

Zoned: Industrial

Lot Sizes: 29.38 acres

Vacant Lots: 1

Sublot: 8

Contact: Robert E. Cseplo, Owner
440-286-7411

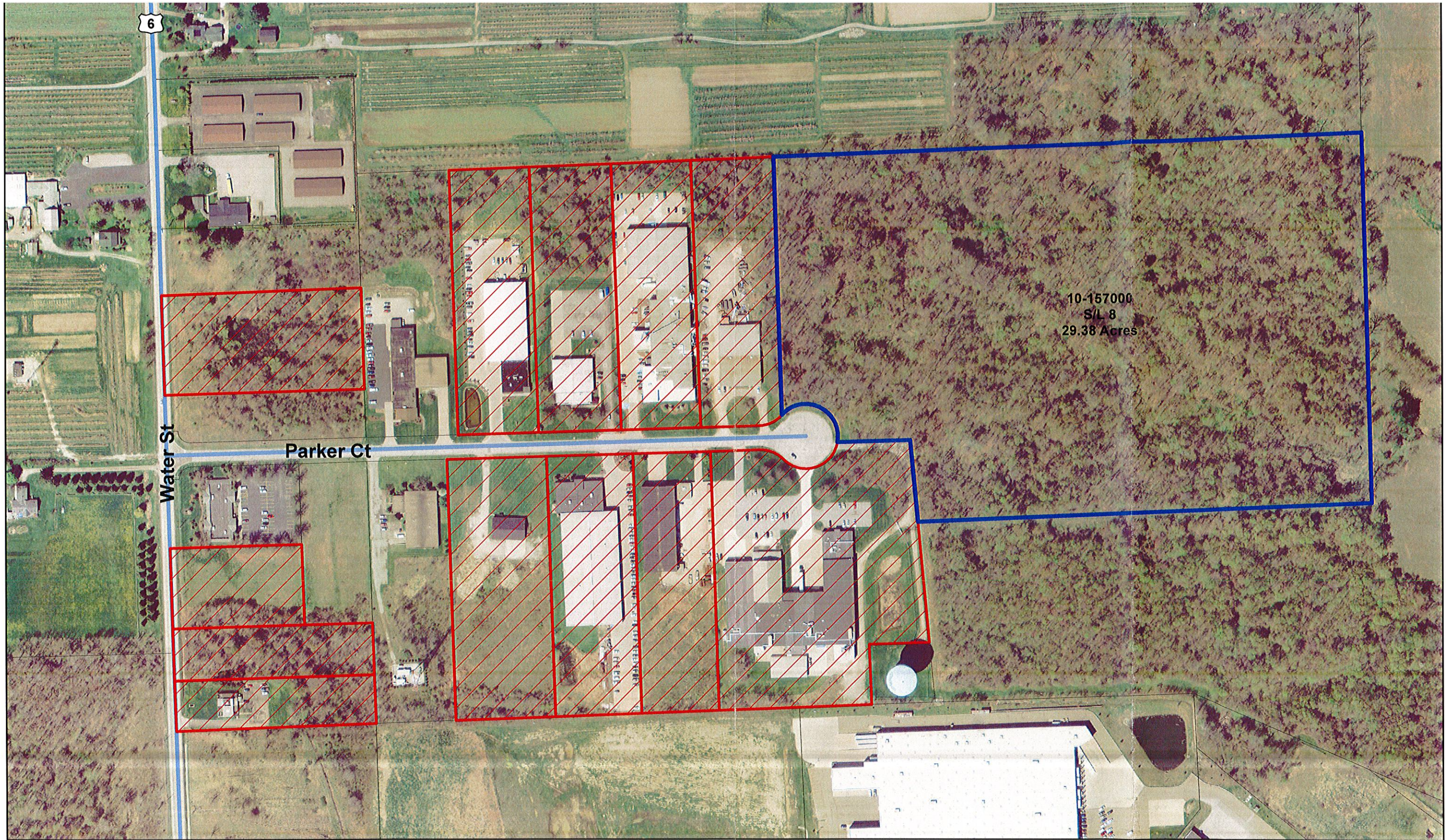
Transportation:

Access to major routes (US-322, US-6,
SR-44, I-90)

Map Prepared By:

Geauga County Planning Commission, June 2017

Geauga County assumes no legal responsibility for this information.

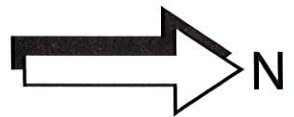


10-157000
S/L 8
29.38 Acres

Water St

Parker Ct

6



 Industrial-vacant land

Parker Court Industrial Park

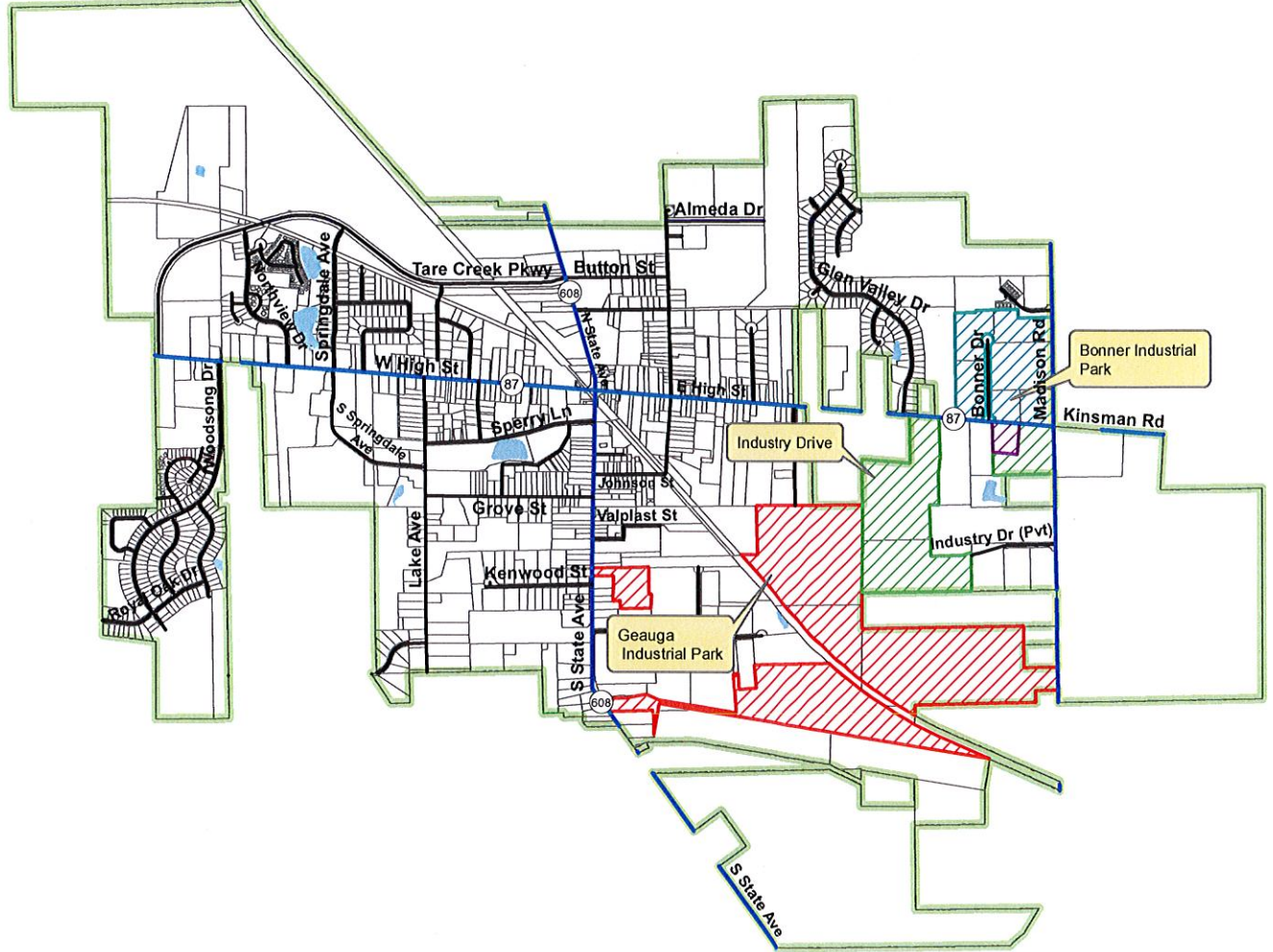
City of Chardon
Geauga County, Ohio

Map Prepared By: Geauga County Planning Commission
March 2017
Source: Geauga County Auditor
Geauga County assumes no legal responsibility
for this information.

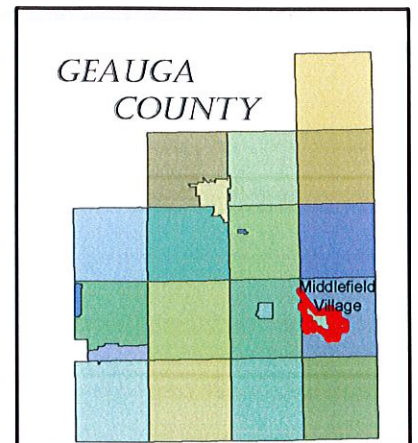
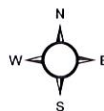
Middlefield Village

Industrial Park Locations

Geauga County, Ohio



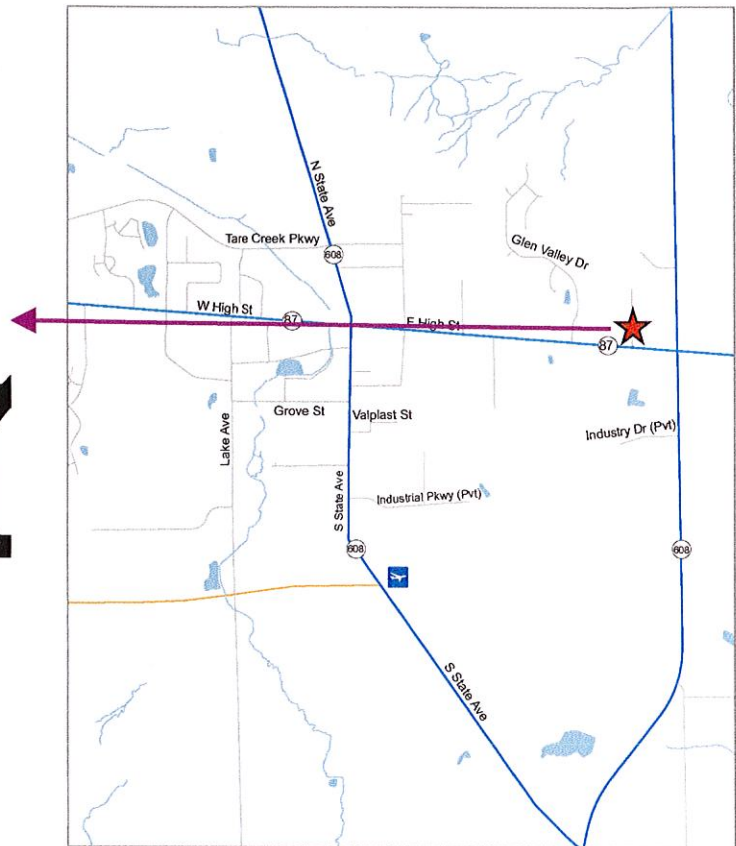
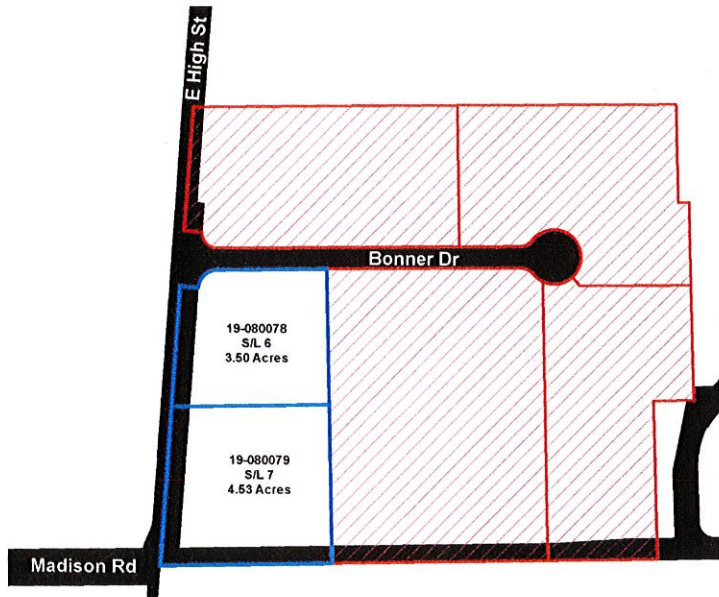
-  State Road
-  Bonner Industrial Park
-  Geauga Industrial Park
-  Industry Drive



Map Prepared By: Geauga County Planning Commission
 July 2017
 Source: Geauga County Auditor
 Geauga County assumes no legal responsibility
 for this information.

BONNER INDUSTRIAL PARK

Middlefield Village,
Geauga County, Ohio



CONTACTS

Middlefield Village: 440-632-3525

lgambosi@middlefieldohio.com

Economic Development: 440-632-3540

lgambosi@middlefieldohio.com

Water Department: 440-632-5248

servicedirector@middlefieldohio.com

County Departments:

Building Department: 440-279-1780

Lmoriarty@co.geauga.oh.us

Geauga SWCD: 440-834-1122

gcsxcd@geaugaswcd.com

Tax Incentives:

Leslie Gambosi-McCoy

440-632-3540

Electric/Natural Gas/Telephone/Broadband:

Dominion Energy: 1800-362-7557

The Illuminating Co.: 1800-589-3101

Windstream: 330-299-1094

Spectrum: 866-874-2389

Industrial Park Amenities:

Zoned: Planned Unit Industrial Development

Lot Sizes: 3.50-4.53 acres

Vacant Lots: 2

Sublots: 6-7

Contact: Gold Key Processing, LTD., Owner
440-632-0901

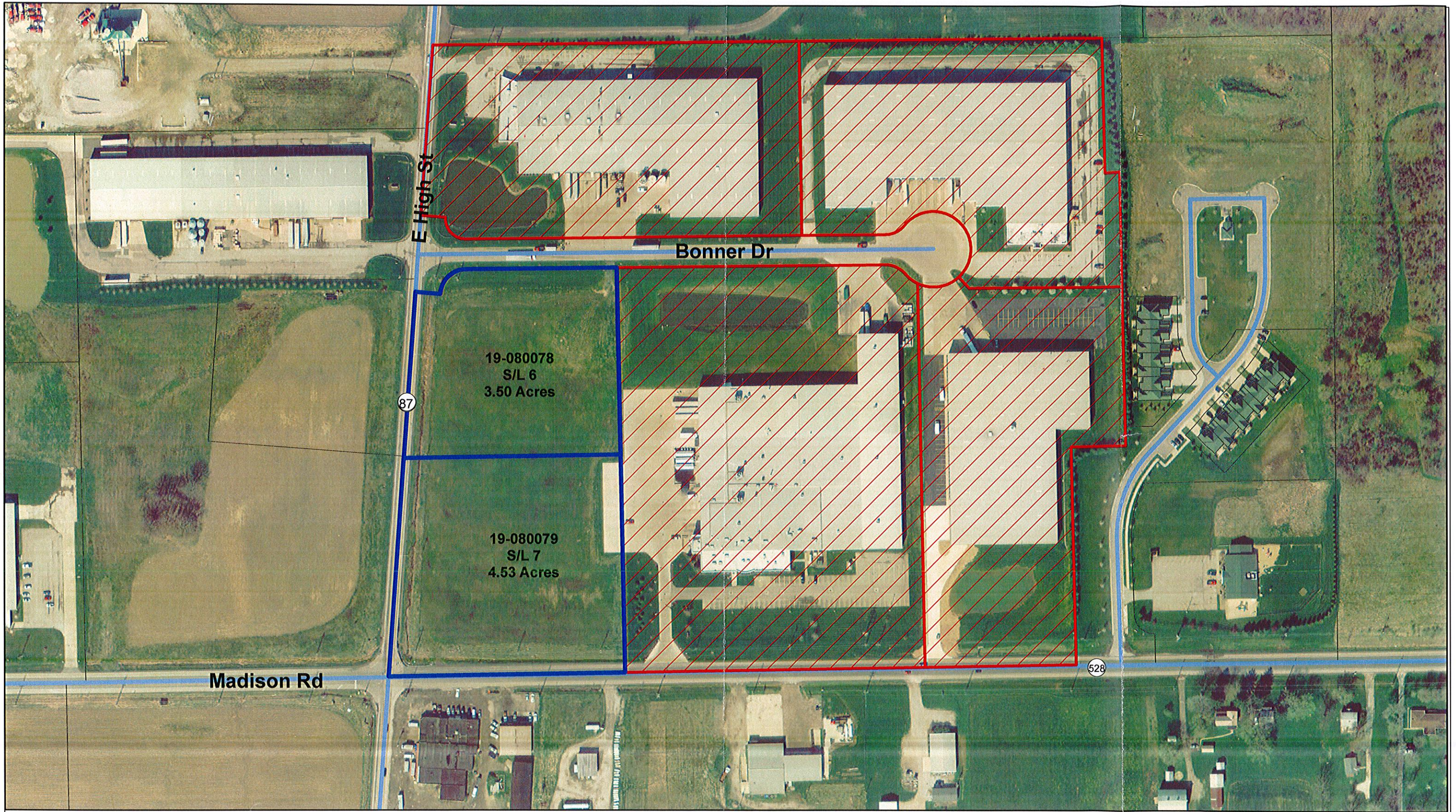
Transportation:

Access to major routes (US-422, US-322,
SR-608, SR-87, SR-528)

Map Prepared By:

Geauga County Planning Commission, July 2017

Geauga County assumes no legal responsibility for this information.



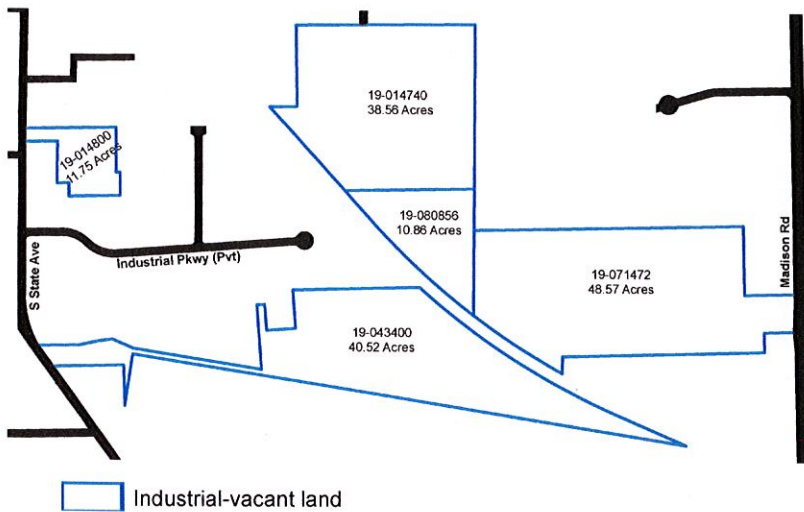
 Industrial-vacant land

Bonner Industrial Park
 Middlefield Village
 Geauga County, Ohio

Map Prepared By: Geauga County Planning Commission,
 July 2017
 Source: Geauga County Auditor
 Geauga County assumes no legal responsibility
 for this information.

GEAUGA INDUSTRIAL PARK

Middlefield Village,
Geauga County, Ohio



CONTACTS

Middlefield Village: 440-632-3525
lgambosi@middlefieldohio.com
Economic Development: 440-632-3540
lgambosi@middlefieldohio.com
Water Department: 440-632-5248
servicedirector@middlefieldohio.com
County Departments:
Building Department: 440-279-1780
Lmoriarty@co.geauga.oh.us
Geauga SWCD: 440-834-1122
gcsxcd@geaugaswcd.com
Tax Incentives:
Leslie Gambosi-McCoy
440-632-3540

Electric/Natural Gas/Telephone/Broadband:

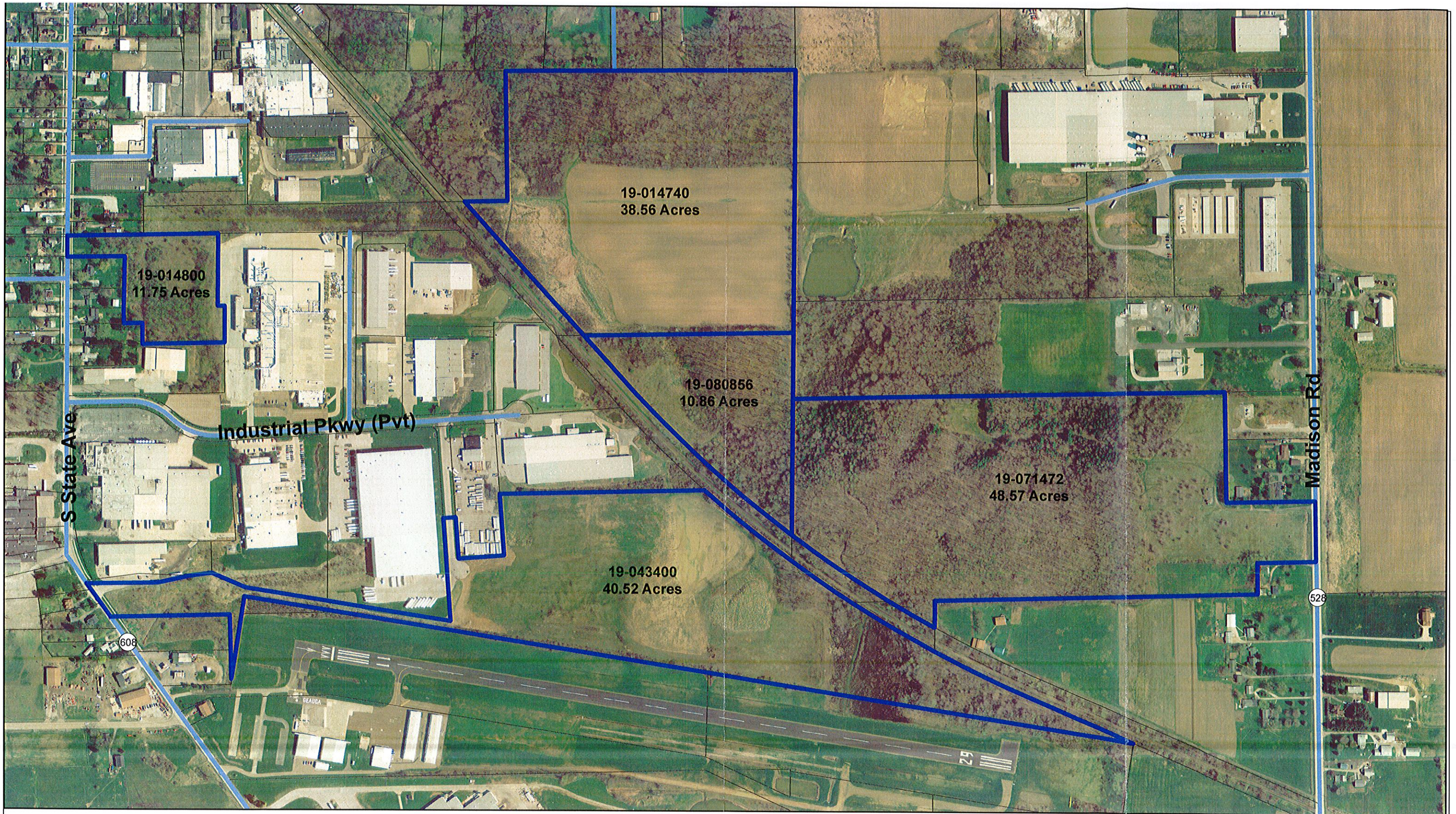
Dominion Energy: 1800-362-7557
The Illuminating Co.: 1800-589-3101
Windstream: 330-299-1094
Spectrum: 866-874-2389

Industrial Park Amenities:

Zoned: Industrial
Lot Sizes: 10.86-48.57 acres
Vacant Lots: 5
Contact: David Ford, Owner
216-272-7276

Transportation:

Access to major routes (US-422, US-322, SR-608, SR-87, SR-528)



Industrial-vacant land

Geauga Industrial Park

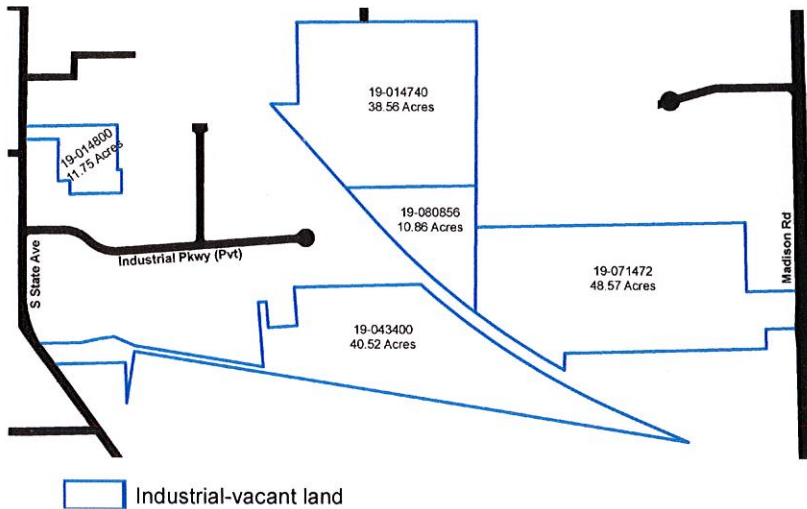
Middlefield Village
Geauga County, Ohio

Map Prepared By: Geauga County Planning Commission,
July 2017

Source: Geauga County Auditor
Geauga County assumes no legal responsibility
for this information.

INDUSTRY DRIVE

Middlefield Village,
Geauga County, Ohio



CONTACTS

Middlefield Village: 440-632-3525
lgambosi@middlefieldohio.com
Economic Development: 440-632-3540
lgambosi@middlefieldohio.com
Water Department: 440-632-5248
servicedirector@middlefieldohio.com
County Departments:
Building Department: 440-279-1780
Lmoriarty@co.geauga.oh.us
Geauga SWCD: 440-834-1122
gcsxcd@geaugaswcd.com
Tax Incentives:
Leslie Gambosi-McCoy
440-632-3540

Electric/Natural Gas/Telephone/Broadband:

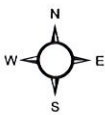
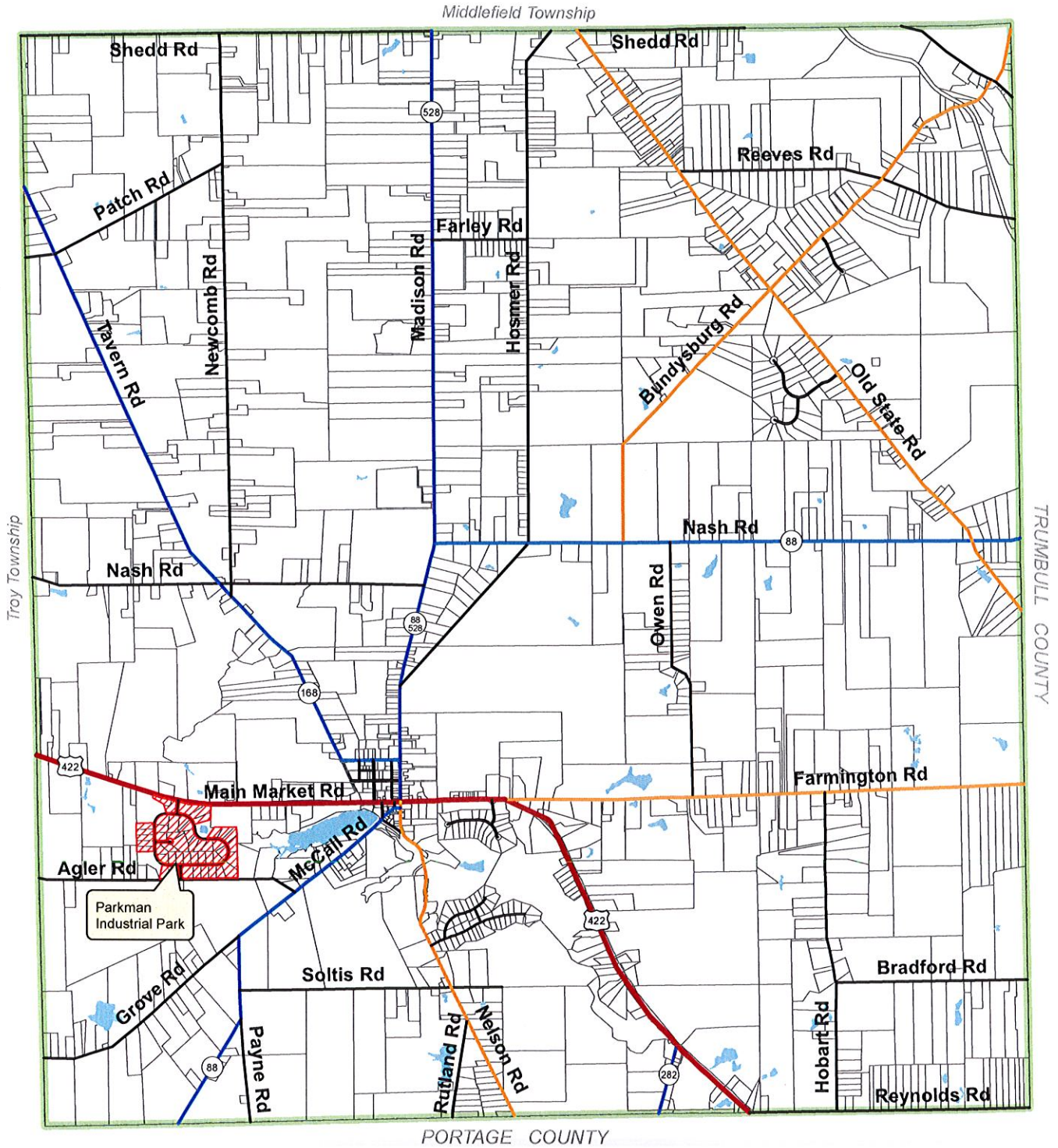
Dominion Energy: 1800-362-7557
The Illuminating Co.: 1800-589-3101
Windstream: 330-299-1094
Spectrum: 866-874-2389

Industrial Park Amenities:

Zoned: Industrial
Lot Sizes: 8.62-26.30 acres
Vacant Lots: 3
Contact: Dick Bonner, Owner
440-632-3308

Transportation:

Access to major routes (US-422, US-322, SR-608, SR-87, SR-528)



Parkman Township

Industrial Park Location
Geauga County, Ohio

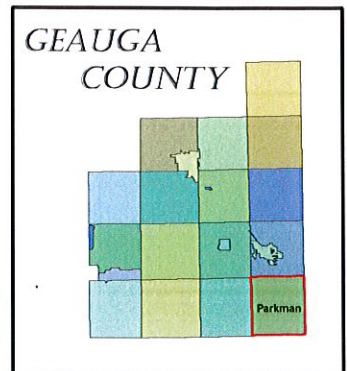
-  Industrial Park
-  County Road
-  State Road
-  U.S. Road

Map Prepared By: Geauga County Planning Commission
June 2005

Revised: October 2005, November 2016

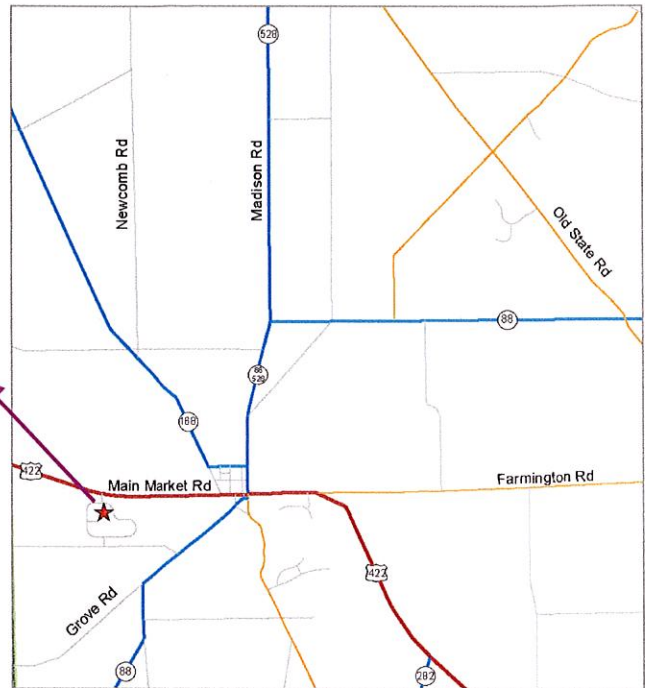
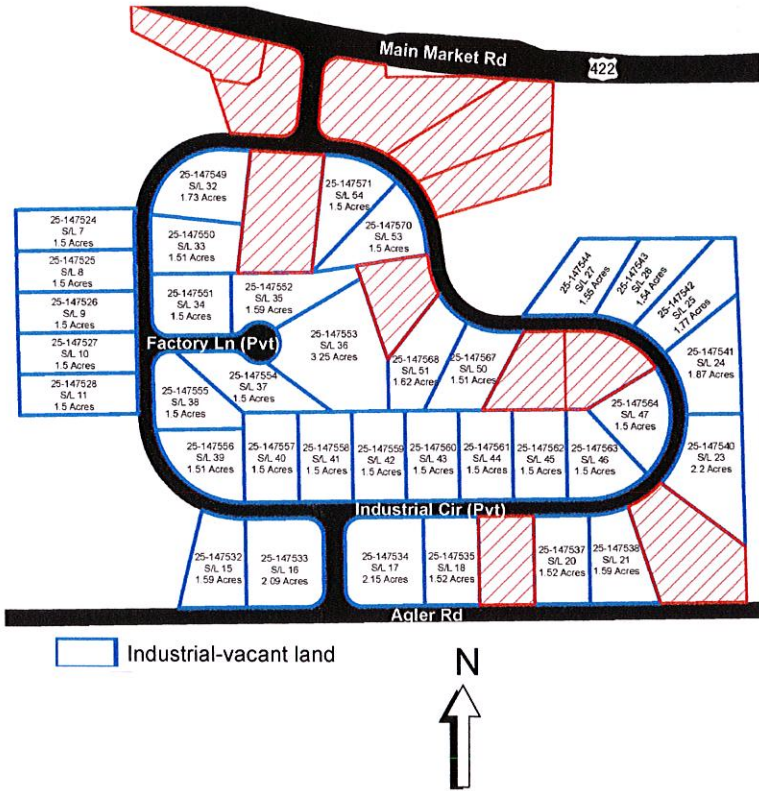
Source: Geauga County Auditor

Geauga County assumes no legal responsibility
for this information.



PARKMAN INDUSTRIAL PARK

Parkman Township,
Geauga County, Ohio



CONTACTS

Parkman Township: 440-548-2904
parkmanfiscal@gmail.com

County Departments:

Building Department: 440-279-1780
Lmoriarty@co.geauga.oh.us
CED (Comm. & Econ. Dev.): 440-279-1790
Kconrad@geaugaced.com
Water Resources: 440-279-1970
info@gcdwr.org
Planning Commission: 440-279-1740
ddietrich@co.geauga.oh.us
Geauga SWCD: 440-834-1122
gcsxcd@geaugaswcd.com

Electric/Natural Gas/Telephone/Broadband:

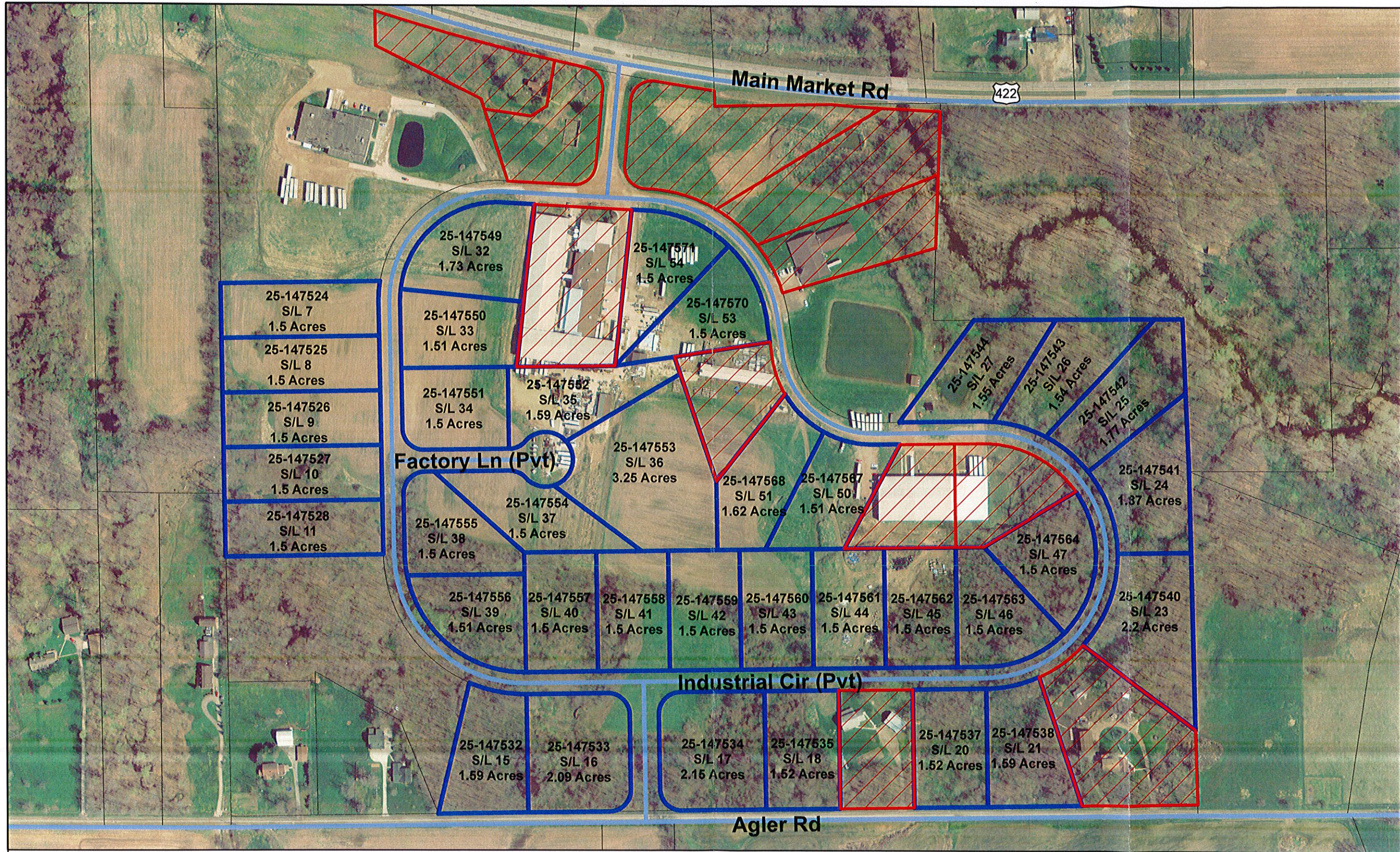
Windstream: 1800-347-1991
Spectrum: 877-772-2253
Ohio Edison: 1800-633-4766
Dominion Energy: 1800-362-7557

Industrial Park Amenities:

Zoned: Industrial
Lot Sizes: 1.50-3.25 acres
Vacant Lots: 36
Sublots: 7-11, 15-18, 20-21, 23-27, 32-47, 50-51, 53-54
Contact: Don R. Hofstetter, Owner
440-548-4111

Transportation:

Access to major routes (US-422, I-480, SR-44, SR-88, SR-528)

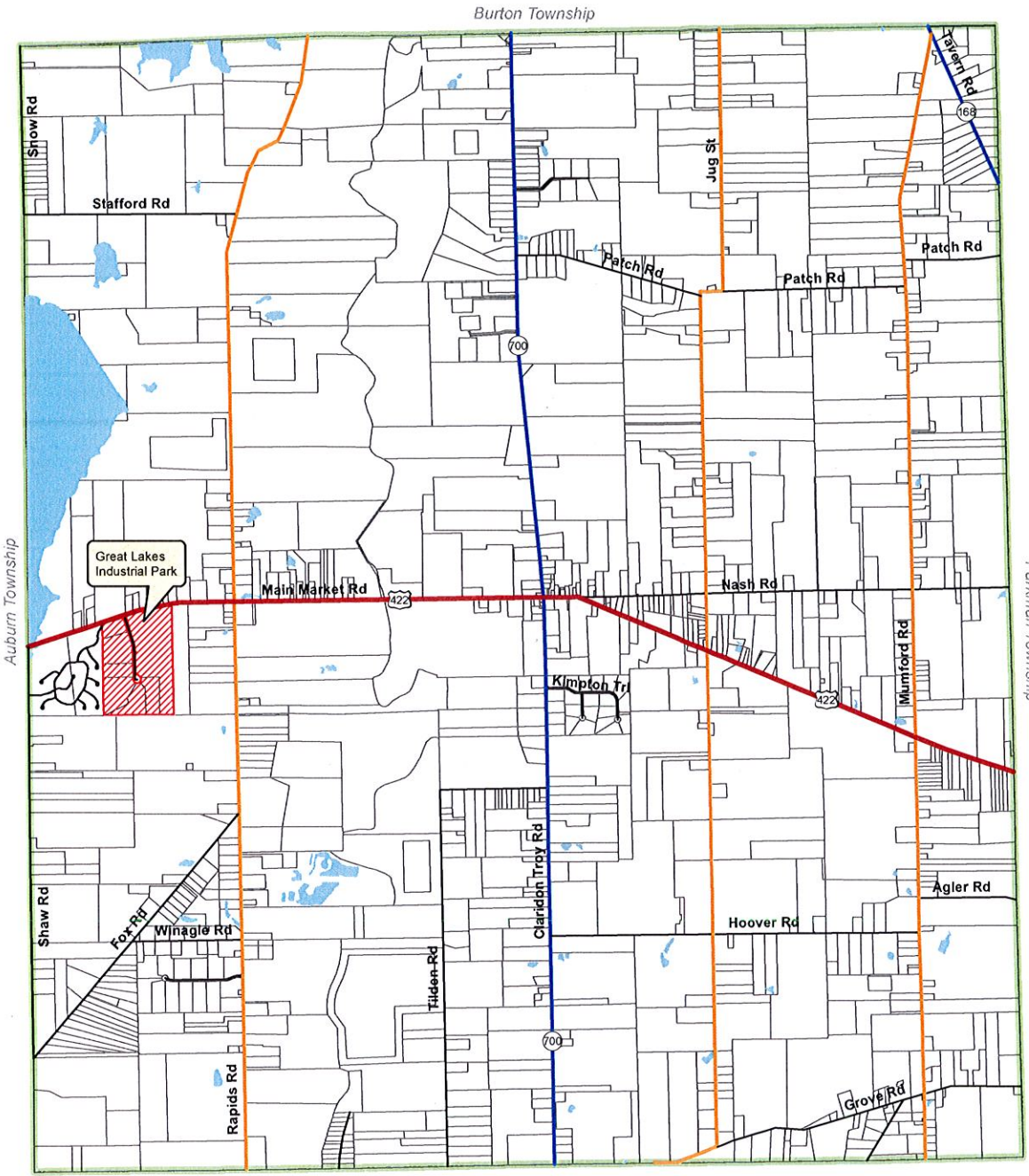


 Industrial-vacant land

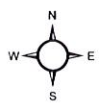
Parkman Industrial Park

Parkman Township
Geauga County, Ohio

Map prepared by: Geauga County Planning Commission,
September 2005
Revised: October 2016
Source: Geauga County Auditor
Geauga County assumes no legal responsibility
for this information.



PORTAGE COUNTY



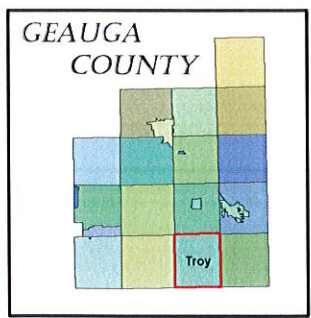
-  Industrial Park
-  County Road
-  State Road
-  U.S. Road

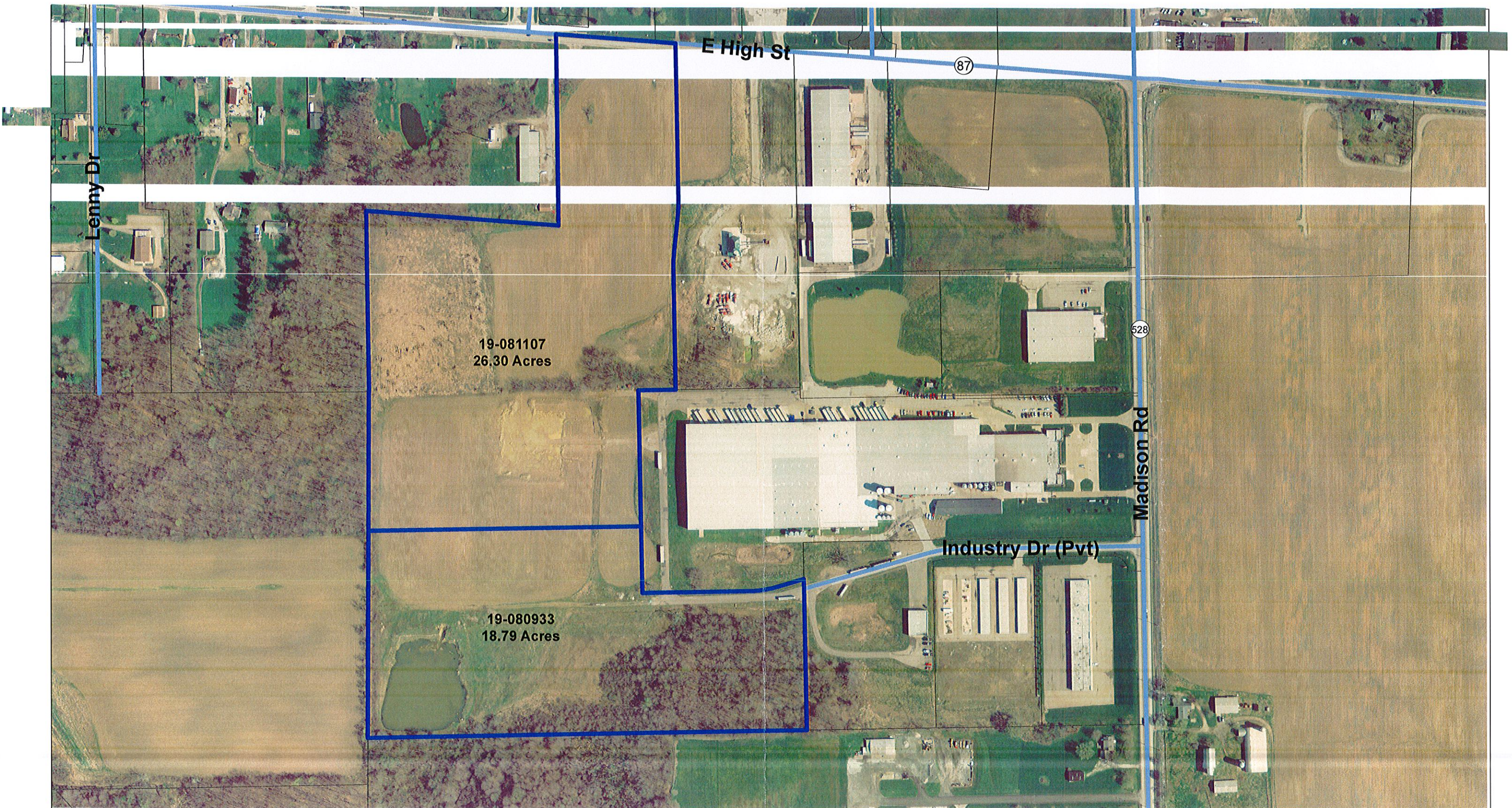
Troy Township

Industrial Park Location

Geauga County, Ohio

Map Prepared By: Geauga County Planning Commission
 March 2005
 Revised: October 2005, November 2016
 Source: Geauga County Auditor
 Geauga County assumes no legal responsibility
 for this information.





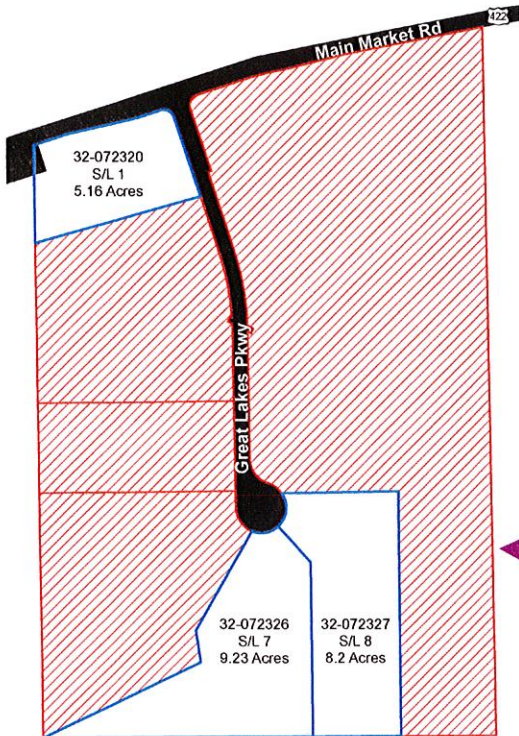
Industrial-vacant land

Industry Drive
Middlefield Village
Geauga County, Ohio

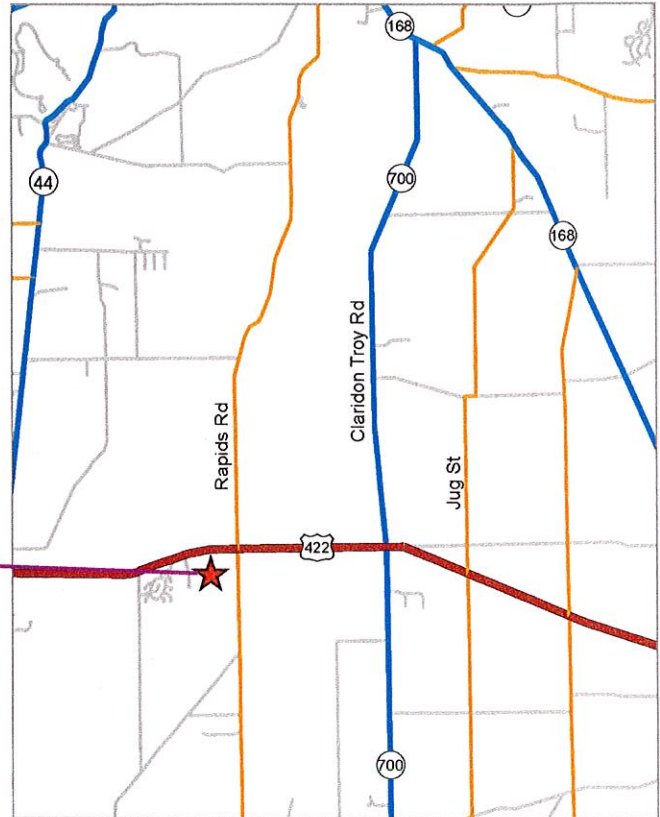
Map Prepared By: Geauga County Planning Commission,
July 2017
Source: Geauga County Auditor
Geauga County assumes no legal responsibility
for this information.

TROY INDUSTRIAL PARK

Troy Township,
Geauga County, Ohio



 Industrial-vacant land



CONTACTS

Troy Township: 440-834-8614
troygeauga@yahoo.com

County Departments:

Building Department: 440-279-1780
Lmoriarty@co.geauga.oh.us
CED (Comm. & Econ. Dev.): 440-279-1790
Kconrad@geaugaced.com
Water Resources: 440-279-1970
info@gcdwr.org
Planning Commission: 440-279-1740
ddietrich@co.geauga.oh.us
Geauga SWCD: 440-834-1122
gcsxcd@geaugaswcd.com

Electric/Natural Gas/Telephone/Broadband:

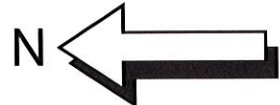
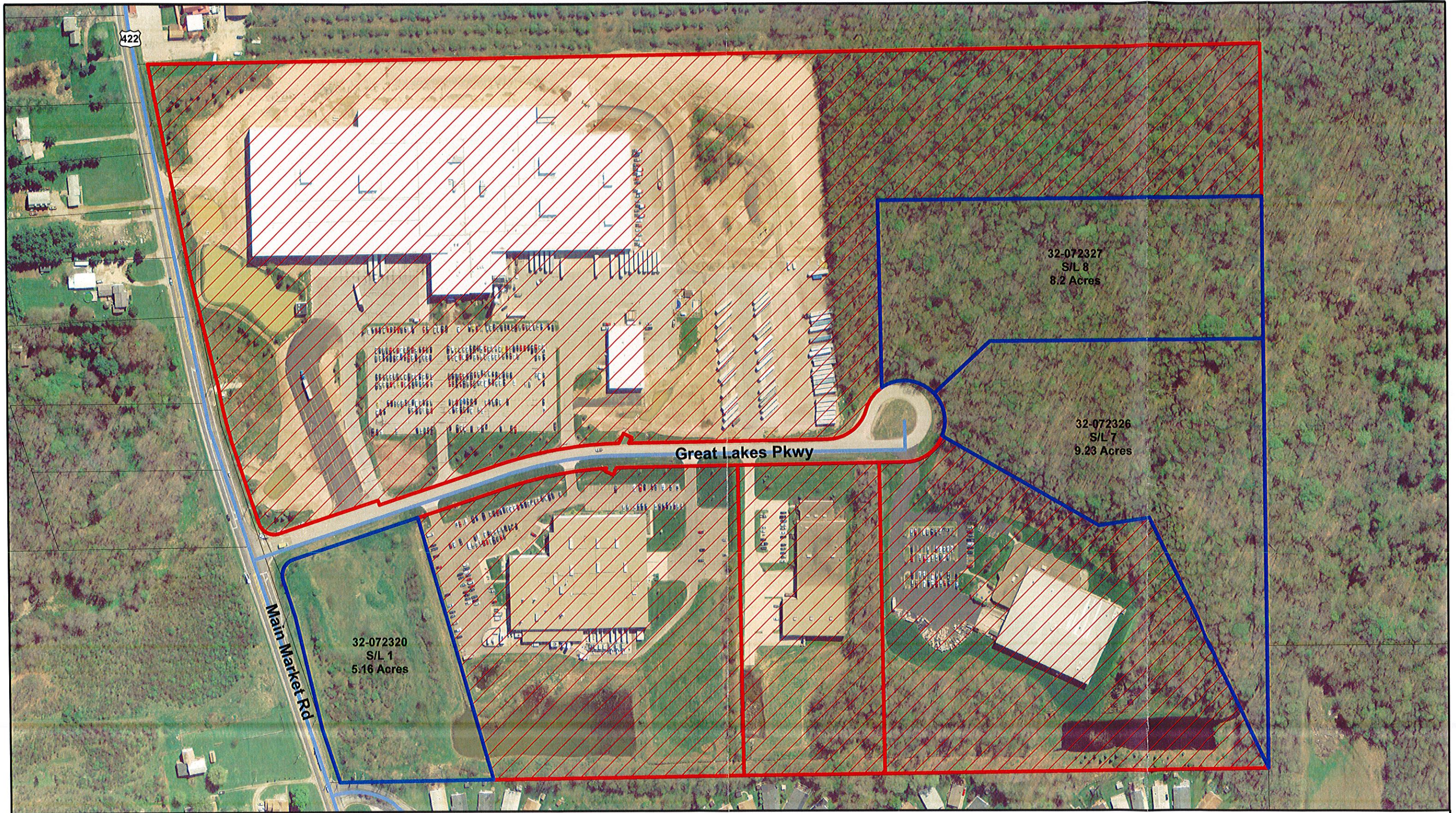
Windstream: 1800-347-1991
Spectrum: 877-772-2253
The Illuminating Co: 888-589-3101
Dominion Energy: 1800-362-7557

Industrial Park Amenities:

Zoned: General Industry
Lot Sizes: 5.16-9.23 acres
Vacant Lots: 3
Sublots: 1, 7, 8
Contact: Russ Mullins, Owner/ Rep.
440-834-2500

Transportation:

Access to major routes (US-422, US-322, I-480, SR-44, SR-87, SR-528)



 Industrial-vacant land

Troy Industrial Park
 Troy Township
 Geauga County

Map prepared by: Geauga County Planning Commission
 May 2017
 Source: Geauga County Auditor
 Geauga County assumes no legal responsibility
 for this information.