

**GEAUGA COUNTY DEPARTMENT
OF
EMERGENCY SERVICES**



**RADIOLOGICAL EMERGENCY RESPONSE PLAN
For an emergency at the
Perry Nuclear Power Plant**

**Revision 28
January 2022**

THE GEAUGA COUNTY RADIOLOGICAL EMERGENCY RESPONSE PLAN

RECORD OF REVISIONS

Global change(s) made throughout the entire plan are:

1. Changed the Revision # and Date on all pages.
2. Minor typographical corrections.
3. Changed “NUREG-0654-FEMA-REP-1” to “NUREG-0654-FEMA-REP-1 Rev 2”.
4. Changed references of “First Energy” and “FENOC” to “Energy Harbor”.
5. Changed references of “Lake Health” to “UH Lake Health” since being acquired by University Hospitals.
6. Changed “care center” to Reception/Care Center

Other Changes:

Section C.3:

- Added statement of how long State and Federal assistance may take.

Section D.3:

- Added statement regarding the annual review of EALs.

Section E:

- E.4.2: Deleted “immediate” from the media briefing statement to reflect handling of misinformation more accurately at the JIC.
- E.4.5: Removed reference to telephone directories.

Section G:

- G.4: Removed the term “hotline” from Public Inquiry.

Section J:

- J.2.a: Replaced “lower” with “adjust” to reflect minimizing air intake more accurately.
- J.3: Indicated the more conservative action “may” be evacuation, rather than “would” be.
- J.4, J.5.1, and J.5.3: Removed reference to telephone directories.

Appendix 1:

- Added Emergency Action Level definition.

Appendix 2:

- Updated EPZ map with Reception/Care Centers.

Appendix 4:

- Name change for some nursing homes.

- Removed Newbury Schools due to closure.

Appendix 6:

- Name change for some nursing homes.

Appendix 20:

- Referenced SOG Attachment 20 for the listing of Risk and Host health care facilities.

Appendix 23:

- Revised crosswalk to reflect the FEMA-REP-1, Rev 2 changes.



GEAUGA COUNTY BOARD OF COMMISSIONERS

James W. Dvorak Timothy C. Lennon Ralph Spidalieri

470 Center Street • Building 4 • Chardon, Ohio 44024-1071

November 30, 2021

*Roger Peterson, Director
Department of Emergency Services
12518 Merritt Road
Chardon, Ohio 44024*

Dear Mr. Peterson:

Please be advised that during session on November 30, 2021 the Board of County Commissioners took the following action:

Motion: by Commissioner Spidalieri, seconded by Commissioner Lennon to approve and execute, and further authorize the Director of Emergency Services to execute the Geauga County Radiological Emergency Response Plan (for an emergency at the Perry Nuclear Power Plant) Revision 28, dated January 2022.

<i>Roll Call Vote:</i>	<i>Commissioner Spidalieri</i>	<i>Aye</i>
	<i>Commissioner Lennon</i>	<i>Aye</i>
	<i>Commissioner Dvorak</i>	<i>Aye</i>

Very truly yours,

*Christine Blair
Commissioners' Clerk*

CERTIFICATION

This Plan is adopted as the Geauga County Radiological Emergency Response Plan for an emergency at the Perry Nuclear Power Plant. It has been developed to comply with all applicable Federal and State regulations and provide the policies and procedures to be followed in responding to such an emergency.

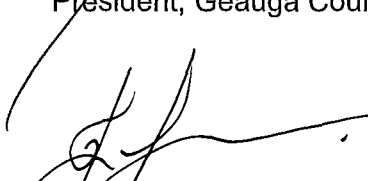
This Plan supersedes all other Geauga County plans for response to an emergency at the Perry Nuclear Power Plant.

Adopted on this date: 11-30-0001

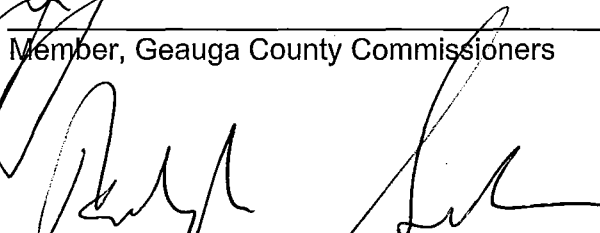
OFFICIALS



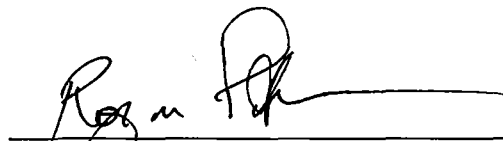
President, Geauga County Commissioners



Member, Geauga County Commissioners



Member, Geauga County Commissioners



Director, Geauga County Department of Emergency Services

DISTRIBUTION

Electronic files of this Radiological Emergency Preparedness Plan (RERP) are distributed to the following agencies:

Geauga County

Geauga County Commissioner, President
Geauga Department of Emergency Emergency Services (DES)

Utility

PNPP Emergency Response Section Supervisor
PNPP Off-Site Liaison

Federal

FEMA Region V (sent by OEMA with the Annual Letter of Certification)

State of Ohio

Ohio Emergency Management Agency - Columbus
OEMA Lake County Resident Radiological Analyst

Other

Lake County Emergency Management Agency
Ashtabula County Emergency Management Agency

The RERP is also posted on the Geauga County DES web site to make it available for any other interested parties.

The Suggested Operating Guidelines (SOGs) are the agency specific portions of the RERP provided to each agency participating in the RERP (Appendix 4).

PREFACE

This Plan describes the actions required by Geauga County to react and respond to a radiological emergency at the Perry Nuclear Power Plant (PNPP) in the event such an emergency should occur.

The Plan identifies responsibilities of County, State, Federal and local agencies during an emergency at PNPP. The Plan outlines what actions are required and who is responsible for completing the actions.

The Plan is supported by Suggested Operating Guidelines for each organization, agency or individual that may have an emergency response function as a result of an emergency at PNPP. These Suggested Operating Guidelines describe in detail, by concept and checklist, the suggested response actions to be taken by the agency, its personnel, or individuals, necessary to accomplish the assigned tasks.

TABLE OF CONTENTS
Geauga County Radiological Emergency Response Plan

	<u>Page</u>
Record of Revisions	i
Certification	1
Distribution	2
Preface	3
A. GENERAL	
A.1 Components of the Overall Radiological Emergency Response Plan	A-1
A.2 Glossary of Terms and Acronyms	A-1
A.3 Components of the RERP	A-1
A.4 Concept of Operations	A-2
A.5 Emergency Planning Zones	A-5
A.6 Reentry and Recovery	A-6
B. ASSIGNMENT OF RESPONSIBILITY (Organizational Control)	
B.1 Purpose	B-1
B.2 Agencies Participating in Geauga County Emergency Response	B-1
B.3 Direction and Control	B-1
B.4 Continuous Operations	B-2
B.5 Legal Basis	B-3
C. EMERGENCY RESPONSE SUPPORT AND RESOURCES	
C.1 Purpose	C-1
C.2 County Resources Available to Support Federal, State and Private Organizations	C-1
C.3 Sources of Additional Assistance	C-1
C.4 Representation at the Emergency Operations Facility	C-2
D. EMERGENCY CLASSIFICATION SYSTEM	
D.1 Purpose	D-1
D.2 Emergency Classification System	D-1
D.3 Emergency Response Process and Action Level Scheme	D-2

TABLE OF CONTENTS

E.	NOTIFICATION METHODS AND PROCEDURES	
E.1	Purpose	E-1
E.2	County Notification	E-1
E.3	Agency Notification	E-2
E.4	Notification of the Public	E-2
F.	EMERGENCY COMMUNICATIONS	
F.1	Purpose	F-1
F.2	Emergency Communications System	F-1
F.3	Staffing of Communication System	F-3
F.4	Message Center	F-4
F.5	Interagency Communications	F-4
F.6	Communications with Medical Units	F-4
F.7	Testing the Emergency Communications System	F-4
G.	PUBLIC EDUCATION AND INFORMATION	
G.1	Purpose	G-1
G.2	Public Education and Information	G-1
G.3	Public Information During an Emergency	G-2
G.4	Public Inquiry	G-3
G.5	News Media Updates	G-4
H.	EMERGENCY FACILITIES AND EQUIPMENT	
H.1	Purpose	H-1
H.2	Geauga County Emergency Operations Center	H-1
H.3	Activation and Staffing	H-2
H.4	Emergency Equipment	H-2
H.5	Central Location for Receipt and Coordination of Field Monitoring Data	H-4
I.	ACCIDENT ASSESSMENT	
I.1	Purpose	I-1
I.2	Radiological Monitoring and Accident Assessment	I-1

TABLE OF CONTENTS

J.	PROTECTIVE RESPONSE	
J.1	Purpose	J-1
J.2	Potential Protective Actions	J-1
J.3	Determination of Protective Actions	J-2
J.4	Sheltering	J-4
J.5	Evacuation	J-5
J.6	Monitoring and Decontamination of School Children	J-10
J.7	Security Patrols	J-10
J.8	Evacuation Time Estimates	J-11
J.9	Potassium Iodide Distribution and Ingestion	J-11
K.	RADIOLOGICAL EXPOSURE CONTROL	
K.1	Purpose	K-1
K.2	Dosimetry Equipment	K-1
K.3	Records	K-1
K.4	Dosimetry Reading and Exposure Reporting	K-2
K.5	Exposure Control and Limits	K-2
K.6	Monitoring for Radioactive Contamination	K-3
K.7	Decontamination	K-4
K.8	Contaminated/Injured Persons	K-5
K.9	Use of Radioprotective Drugs	K-5
L.	MEDICAL AND PUBLIC HEALTH	
L.1	Purpose	L-1
L.2	Treating Injured Individuals Who are Contaminated	L-1
L.3	Transportation of Injured Individuals Who are Contaminated	L-1
L.4	Letters of Agreement	L-2
M.	RELOCATION, REENTRY, RETURN AND RECOVERY	
M.1	Purpose	M-1
M.2	Nuclear Incident Phases	M-1
M.3	Recovery, Reentry, Return and Relocation Definitions	M-1
M.4	Protective Actions	M-2
M.5	Shift from Emergency Phase to Intermediate Phase	M-4
M.6	County Operations in the Intermediate Phase	M-5
M.7	Other Intermediate Phase Operations	M-7

TABLE OF CONTENTS

N.	EXERCISES AND DRILLS	
N.1	Purpose	N-1
N.2	Exercises	N-1
N.3	Drills	N-1
N.4	Exercise/Drill Scenarios	N-2
N.5	Exercise/Drill Controllers and Observers	N-3
N.6	Exercise/Drill Critiques	N-3
O.	RADIOLOGICAL EMERGENCY RESPONSE TRAINING	
O.1	Purpose	O-1
O.2	Overview of the County's Training Program	O-1
O.3	Purpose of the Training Program	O-2
O.4	Training Modules and Lesson Plans	O-2
O.5	Who is Trained to What	O-4
O.6	Training Data	O-4
O.7	Just In Time Training	O-4
P.	RESPONSIBILITY FOR THE PLANNING EFFORT	
P.1	Purpose	P-1
P.2	Planning Responsibility	P-1
P.3	Review and Update	P-1
P.4	Support Plans and Documents	P-2
P.5	Cross References	P-2

APPENDICES

- 1 Glossary of Terms and Acronyms
- 2 Emergency Planning Zone (EPZ) Map with Subareas
Evacuation Time Estimate Summary
Description of Evacuation Regions
- 3 EOC Staff
- 4 Emergency Response Agencies, Organizations, EOC Positions
- 5 Agency Responsibility Matrix
- 6 Letters of Agreement
- 7 Emergency Action Level Scheme
- 8 Notification Forms
- 9 Siren Locations
- 10 Emergency Preparedness Information (EPI) Brochure
- 11 Emergency Alert System (EAS) Messages
- 12 Emergency Operations Center (EOC) Communications Links
- 13 Emergency Operations Center (EOC) Floor Plan
- 14 Emergency Kits
- 15 Sector and Zone Designators for PNPP
- 16 County Traffic Control Points
- 17 Access Control Points
- 18 Care Centers and Emergency Worker Monitoring and
Decontamination Station in Geauga County
- 19 Geauga County Receiving Schools and Transportation Staging Area
- 20 Risk/Host Health Care Facilities
- 21 Emergency Worker Protective Action Guidelines (PAG) Exposure Limits/
Contamination Action Levels
- 22 Suggested Operating Guidelines (SOG) Cross Reference with
Emergency Plan Section
- 23 NUREG-0654 Planning Criteria Cross Reference

A. GENERAL

A.1 Components of the Overall Radiological Emergency Response Plan

The overall Geauga County Radiological Emergency Response Plan is composed of two major components: the basic Radiological Emergency Response Plan and the supporting Suggested Operating Guidelines (SOGs).

This volume is the basic Radiological Emergency Response Plan (RERP) for the Geauga County response to an emergency situation at the Perry Nuclear Power Plant (PNPP). The RERP describes the total emergency preparedness program established and implemented by Geauga County to assure the capability and readiness to respond to and mitigate the consequences of an emergency situation at PNPP, which impacts Geauga County. Included are guidelines for assessment of and response to emergency situations, descriptions of responsibilities and the coordination within and among emergency response organizations.

The SOGs provide support for the basic RERP by providing the details and instructions necessary to execute the concepts described. The SOGs provide guidance for response actions, yet permit flexibility for actions and decisions that can be determined only at the time of an emergency when the variables can be better identified and evaluated. Each organization that may be requested to provide support in Geauga County has a procedure that describes the support to be provided and the means for notification and communications. Appendix 4 lists supporting organizations.

A.2 Glossary of Terms and Acronyms

A number of terms and acronyms are used in this document that are not common. They are listed and defined in Appendix 1.

A.3 Components of the RERP

The RERP states the responsibilities of county and local agencies during a radiological emergency at PNPP, with emphasis on WHAT actions are required and WHO is responsible for performing these actions. The RERP consists of 16 parts, plus appendices. Part A provides general background information pertinent to Geauga County and its relationship to the Perry Nuclear Power Plant Emergency Planning Zones. Parts B through P consist of detailed statements of the elements of planning, following the format of the corresponding planning standards "A" through "P" as set forth in NUREG-0654-FEMA-REP-1, Rev 2.

The RERP is an Annex of the Geauga County All Hazards Emergency Operations Plan, which is referenced for response actions that are not specific to radiological events but are covered under an all hazards response. The RERP is supported by a set of Suggested Operating Guidelines (SOGs). These are detailed instructions addressed to specific response agencies throughout the county, which explain in detail WHEN and HOW each of the response actions is to be performed.

Agencies having responsibilities in the RERP will be trained in their actions. Exercises and drills of various response activities will be conducted at regularly scheduled intervals to maintain the local ability to implement the plan.

The Appendices contain a cross-reference that lists where each planning criterion in NUREG-0654-FEMA-REP-1, Rev 2 can be found in the RERP and a listing of all of the Geauga County SOGs, with a reference to the sections of the RERP supported by each SOG.

A.4 Concept of Operations

Pre-Incident Preparations: Preparation for coping with an incident at PNPP is a joint cooperative effort by county, local and State governments; Federal agencies, private organizations and the utility. Each organization must define its role, prepare plans and procedures, train personnel, conduct exercises and drills, and develop and maintain appropriate resources in order to ensure the capability to coordinate activities with other organizations and to respond effectively to an emergency situation.

Emergency Operations: The direction and control of offsite emergency activities in Geauga County is the responsibility of the County Commissioners. The Commissioners will receive advice and support from the Department of Emergency Services (DES) Director, Sheriff, Executive Group Assistant and Public Information Officer (PIO) Liaison who, with the Commissioners comprise the Emergency Operations Center (EOC) Executive Group. The Executive Group will initiate necessary immediate actions involving organizations throughout the county.

The DES Director serves as Chief of Staff for the Commissioners during an emergency and coordinates response efforts of local, county, State and Federal agencies within Geauga County. A general description of the response of Geauga County officials to an incident is described below. The actual response will be dependent upon the nature and extent of the incident. County government operations will continue to be performed in a normal manner to the fullest extent possible.

Notification: PNPP will notify Geauga County of an UNUSUAL EVENT, ALERT, SITE AREA EMERGENCY or GENERAL EMERGENCY via the 5-way Dedicated Telephone which is monitored 24 hours a day by the Geauga County Sheriff's Dispatch Center. The dispatchers and, when the EOC is activated, EOC Communications will notify agencies and individuals that are part of the county emergency response organization, according to the pre-established notification scheme. Agencies will conduct internal notification and a callout of their personnel to carry out response functions. Designated EOC staff may also make supplemental notifications.

The public will be informed of the emergency conditions and response actions through news releases. The Public Information Officer (PIO) will be the official county spokesperson. For immediate protective action instructions, Lake County EOC will activate the Alert/Notification System (sirens/EAS) throughout the 10-Mile Emergency Planning Zone (EPZ) to alert the public to tune to the Emergency Alert System (EAS). Geauga County and Ashtabula County will provide backup siren activation coverage in the event Lake County cannot activate the siren system. A protective action message will be selected by the Lake County Commissioners in coordination with Geauga and Ashtabula counties' Commissioners and communicated to EAS stations for broadcast. The National Oceanic Atmospheric Administration (NOAA) will instruct the public via Weather Radios to listen to an EAS station for emergency information. If any sirens fail to sound or special notification is required, emergency response agencies within the 10-Mile EPZ will dispatch back-up route alerting and special notification teams to conduct notification.

Communications: The Geauga County EOC is equipped with telephone and radio communications systems that are able to adequately support EOC operations. EOC staff has access to telephones for communicating with response units under their coordination. Where radio communications are needed the EOC Communications Center can adequately support EOC operations. Amateur radio operators will provide communications support for Reception/Care centers and other field operations as needed. The EOC Staff will use Storm Chaser messaging to send and receive messages within the EOC. Messages received from outside the EOC will be logged and maintained by the Message Center. The Historian will maintain the EOC Message Log and ensure key events and emergency status boards are kept up to date. Storm Chaser allows the history of the event and messages to be saved for historical purposes.

Accident Assessment: PNPP, Lake County General Health District (LCGHD) and Ohio Emergency Management Agency (OEMA)/Ohio Department of Health (ODH) field monitoring teams will independently monitor radiation levels and report findings to their respective agencies

The Executive Group in Geauga County will ensure local conditions are taken into consideration when deciding upon a protective action. In the event of a Hostile Action Based incident, the Executive Group will coordinate with the Incident Command to ensure any Protective Action Decision (PAD) supports activities at the incident site.

Protective Response: If a sheltering protective action is implemented, persons affected will be advised via the Alert/Notification System (sirens/EAS) to go indoors and shut off intake of outside air.

If an evacuation protective action is implemented, persons affected will be advised to leave the area. The Sheriff's Office will ensure that traffic flow is maintained, with assistance from local police departments. The County Engineer/Transportation Officer is responsible for keeping evacuation routes clear of impediments.

Most evacuees will leave in personal vehicles. For that portion of the population without access to a vehicle, the EOC Engineer/Transportation Officer will coordinate transportation support with the Fire/EMS Coordinator and School Transportation Supervisors.

School districts will provide buses for transport of school children, health care facility patients and the general public needing transportation. Fire departments and private ambulance companies will provide ambulances for mobility impaired persons and for emergency transport.

Receiving facilities for schools and health care facilities within the 10-Mile EPZ have been prearranged. Should problems arise in the relocation of these population groups, the Schools' Services Rep and Health Commissioner will provide assistance as requested. Fire departments are responsible for contamination monitoring and decontamination at Reception/Care centers, if necessary. The American Red Cross is responsible for other Care Center activities such as family reunification, lodging and feeding. When requested, Geauga County DES will coordinate with the County Dog Warden to accommodate evacuees' pets. If requested, the Health Commissioner at the EOC will assure that acceptable health standards are maintained at Reception/Care centers.

Upon evacuation of the area the Sheriff's Office with assistance from local police, Ohio State Highway Patrol and the Ohio National Guard will control access to the evacuated areas and conduct security patrols. For protective actions involving the Ingestion Exposure Pathway, the Ohio State University (OSU) Extension will assist State agencies with implementation of needed actions.

Radiological Exposure Control: Emergency workers will be issued dosimetry, Potassium Iodide (KI) and instructions for reading and reporting doses. Response agency administrators will monitor and control radiological exposure of personnel within their agency and report emergency worker exposures to the County Radiological Officer (RO), who is responsible for monitoring and controlling exposures of all county emergency workers. This includes ensuring operation of radiological monitoring and decontamination stations for emergency workers and for the general public at Reception/Care centers.

Protective Action Guidelines (PAGs) for emergency workers are identified in Appendix 21.

A.5 Emergency Planning Zones

Federal regulations define two emergency planning zones (EPZs) surrounding a nuclear power plant for which emergency planning must be accomplished. These are the Plume Exposure Pathway EPZ and the Ingestion Exposure Pathway EPZ.

The Plume Exposure Pathway EPZ is the area for which detailed planning is warranted for protection of the population; this is the area within approximately 10-miles of the plant. The 10-mile radius is modified somewhat to avoid dividing contiguous concentrations of population by the EPZ boundary to coincide with boundaries of local political subdivisions (cities, townships) wherever possible. The Plume Exposure Pathway EPZ is commonly referred to as the 10-Mile EPZ.

Subareas: Protective response may be required for part or all of the 10-Mile EPZ. Areas in close proximity to PNPP are more likely to be affected by an emergency; therefore, the 10-Mile EPZ has been divided into subareas so that the response effort can be directed toward that portion of the EPZ affected. The subarea boundaries have been identified and established based on radii from PNPP, jurisdictional boundaries and geographic characteristics. The subareas are shown in the Appendices.

The area within Geauga County that is within the Plume Exposure Pathway EPZ for PNPP includes most of Thompson Township. The closest point in Geauga County to PNPP is six miles from the Plant. Approximately 2000 residents of Geauga County live within Subarea 5 of the Plume Exposure Pathway EPZ.

The Ingestion Exposure Pathway EPZ is the area around a nuclear power plant out to a radius of about 50 miles. The Ingestion Exposure Pathway EPZ includes the Plume Exposure Pathway EPZ. Projected radiation doses resulting from a serious incident at a nuclear power plant are not expected to be high enough in the area of the Ingestion Exposure Pathway EPZ, beyond the 10-Mile Plume Exposure Pathway EPZ, to require immediate protective actions for the public. Radiation doses in this area of the Ingestion Exposure Pathway EPZ are expected to result primarily from ingestion of food and water contaminated with radioactive material.

A.6 Reentry and Recovery

Gauga County Commissioners will coordinate with Federal, State, and local agencies in the re-entry and recovery process. After the emergency is terminated, the Executive Group will make preparations for and coordinate any re-entry and recovery efforts that may be necessary.

B. ASSIGNMENT OF RESPONSIBILITY (ORGANIZATIONAL CONTROL)

B.1 Purpose

To identify organizations participating in a response to a radiological emergency at PNPP. To identify the individual agency responsibilities for specific emergency response functions. To identify organization structure for the Geauga County emergency response effort.

B.2 Agencies Participating in Geauga County Emergency Response

Selected county, local, State, Federal, and private/volunteer organizations, plus the utility are part of the overall response effort and are listed in this section, along with summary concepts of their expected contributions to the total response effort.

Appendix 3 lists the agencies and organizations that would likely participate in a Geauga County response to an emergency at PNPP. A brief description of the response functions for each group is listed in Appendix 4. The primary and secondary responsibilities for each group are shown in Appendix 5.

In the event additional agencies are needed to provide position backfill or other assistance, they will be provided Just-In-Time training for their role in the response effort prior to assuming their duties.

The intent of each agency and organization to provide support and whose response functions are not covered by law, regulation or executive order is demonstrated by the Letters of Agreement.

B.3 Direction and Control

The County Commissioners shall be in overall charge of the emergency response by Geauga County. They will be assisted by the DES Director, the Sheriff, the Executive Group Assistant and the PIO Liaison. The Commissioners and these key individuals shall comprise the EOC Executive Group.

The Commissioners, in consultation with the other members of the EOC Executive Group, make policy decisions on responses to be taken, implement those recommendations made by State agencies which they deem to be useful for Geauga County and approve major adjustments to planned responses as the

situation develops. This includes declaration of a county "State of Emergency" by resolution in order to request aid from State of Ohio.

The DES Director serves in the dual capacity of Emergency Director and Chief of Staff for the County Commissioners during emergencies. In the role of Chief of Staff the DES Director manages operation of the EOC and coordinates the total emergency response effort. The DES Director is also responsible for coordination of the emergency actions of individual agencies and for the coordinated use of available resources.

To assure that a decision-making capability will be available for emergency response if the EOC Executive Group cannot be fully assembled, the following succession of authority will be followed:

- + Commissioners
 - President
 - Vice President
 - Member

- + Department of Emergency Services (DES) Director
 - DES Director Designee

- + Sheriff
 - Sheriff's Designee

To assist the Executive Group, individuals with pre-assigned functions and responsibilities staff the EOC.

In any event that an Incident Command Post (ICP) is established, the Executive Group will coordinate with the Incident Command (IC) to ensure any PAD issued supports the activities in the area under the IC control.

B.4 Continuous Operations

The Geauga County Department of Emergency Services (DES) Director will ensure that resources are available to provide for continuous operations of the overall emergency response effort and the EOC, on a 24-hour a day basis. Shift coverage and shift duration will be determined at the time of the emergency. As each shift reports, there will be a briefing and turnover of responsibility.

Gauga County maintains the full-time capability at the Sheriff's Dispatch Center for radio dispatching as well as telephone notification. The Dispatch Center has

the 24-hour capability to receive notification of a radiological emergency at PNPP and to relay this notification to county agencies participating in the emergency response. The emergency notification sequence is described in detail in Part E of this plan.

B.5 Legal Basis

Planning

Sections 5502.21 through 5502.51 of the Ohio Revised Code establishes the county as the primary local planning unit for response to a radiological emergency. The Ohio Plan for Response to Radiation Emergencies at Licensed Nuclear Facilities further establishes the county as the local unit of government with whom State agencies will coordinate during a radiological emergency.

Geauga County Response Activities

The Geauga County Commissioners have the authority to direct county agencies in an emergency. As described under sections 5502.21 through 5502.51 of the Ohio Revised Code, the county has the authority to coordinate the responses of the various political subdivisions within the county during a disaster.

State of Ohio Response Activities

Sections 5502.21 through 5502.51 of the Ohio Revised Code define the authority of various State agencies to carry out response activities to a radiological emergency. Additional legal support is found in the Order of the Adjutant General of Ohio and agreements with the Federal Emergency Management Agency (FEMA Region V). State activities in a radiological emergency involve providing support such as manpower, technical expertise and recommendations, but do not call for State direction of local government activities.

C. EMERGENCY RESPONSE SUPPORT AND RESOURCES

C.1 Purpose

To identify the resources available to support the Federal response to an emergency at the PNPP and to identify other organizations that may provide support to Geauga County.

C.2 County Resources Available to Support Federal, State and Private Organizations

The Federal, State and private organizations supporting emergency response with Geauga County are largely self-contained; that is, they have their own manpower and equipment. However, in some instances these organizations will require support from the county.

The County resources available to support Federal, State and private organizations during an emergency at PNPP include:

Use of the county airport, located at 15421 Old State Road, Middlefield.

Office space at or near the EOC.

Assistance in providing clerical support.

Assistance in locating lodging accommodations, providing county road maps, and arranging for meetings with local officials.

Ground transportation and limited use of county pool vehicles.

Communications such as telephone lines, radio frequencies and fax machines.

C.3 Sources of Additional Assistance

The DES Director will evaluate requests for assistance or additional resources from County or local agencies. These requests will be satisfied from resources within Geauga County to the extent possible. A list of support agencies with the county is shown in the Appendices. Resources that have Letters of Agreement with the DES are listed in Appendix 6. The Geauga County Emergency Operations Plan will be utilized for resources and any requests not addressed in the Radiological Emergency Response Plan.

If requirements cannot be satisfied with resources from within the County, the DES Director will request additional assistance from the OEMA. These requests include resources of the Federal and State Governments and counties around other Energy Harbor plants that have radiological emergency response capabilities.

The Federal Radiological Monitoring and Assessment Center (FRMAC) location is referenced in the Ohio Plan for Response to Radiation Emergencies at Licensed Nuclear Facilities - Section II, Part C.

Note: State resources may take 3 hours or longer to respond. Federal resources may take 72 hours or longer.

C.4 Representation at the Emergency Operations Facility

The county will not send any representative to the PNPP Emergency Operations Facility.

D. EMERGENCY CLASSIFICATION SYSTEM

D.1 Purpose

To ensure that a standard emergency classification system and action level scheme is used by PNPP and the response organizations of Geauga County for offsite response measures.

D.2 Emergency Classification System

The emergency classification system consists of four levels. These levels are arranged in ascending order of emergency severity and serve as initiators of specific response actions by Geauga County emergency response agencies. These classifications from the least serious to the most serious are: UNUSUAL EVENT, ALERT, SITE AREA EMERGENCY and GENERAL EMERGENCY.

Classification Descriptions

UNUSUAL EVENT: Events out of the ordinary are in progress or have occurred which indicate a potential degradation of the level of safety in the plant or a potential security event. No releases of radioactive material requiring offsite response or monitoring are expected unless further degradation of safety systems occurs.

ALERT: Events are in progress or have occurred which involve an actual or potential substantial degradation of the level of safety of the plant or a security event that involves possible life-threatening risk to site personnel or equipment because of hostile action. Any radioactive releases occurring are expected to be well below the U.S. Environmental Protection Agency (EPA) Protective Action Guideline (PAG) exposure limits.

SITE AREA EMERGENCY: Events are in progress or have occurred which involve actual or likely major failures of plant functions needed for protection of the public or security events that result in intentional damage or malicious acts toward site personnel or equipment needed for the protection of the public. Any releases are not expected to exceed U.S. EPA Protective Action Guideline exposure limits offsite.

GENERAL EMERGENCY: Events are in progress or have occurred which involve actual or imminent substantial fuel core degradation or melting with a potential for loss of containment integrity or security events that result in an actual loss of physical control of the facility. Releases may exceed U.S. EPA Protective Action Guideline exposure limits offsite.

D.3 Emergency Response Process

The County Commissioners will decide on emergency actions to be taken in Geauga County. Decisions will be made in consultation with the EOC Executive Group and be based on recommendations made by PNPP, the State of Ohio and the Geauga County EOC Staff, as well as the emergency classification of the incident. Protective action decisions will be coordinated with Lake and Ashtabula counties and communicated to the State of Ohio and PNPP.

Some emergency response actions will be taken automatically, while others will be at the discretion of the Commissioners. All decisions for protective action recommendations will be based on existing local conditions and should be coordinated with the Incident Command in a Hostile Action Based incident to ensure they do not jeopardize the safety of the responders or public and do not reveal sensitive or classified information. The Appendices contain information which depicts primary emergency response actions that may be employed for each class of emergency.

| Note: Emergency Action Levels are reviewed on an annual basis.

E. NOTIFICATION METHODS AND PROCEDURES

E.1 Purpose

To describe the process for notification of Geauga County emergency response organizations and agencies and public notification of residents within the 10-Mile EPZ.

E.2 County Notification

Upon declaration and classification of an emergency at PNPP, the PNPP Control Room will notify Geauga County by use of the 5-Way Dedicated Telephone Line. Terminals to this line are located at PNPP; OEMA/OSHP; Geauga, Lake and Ashtabula counties. Within Geauga County, the line is in the EOC with an extension to the 24-hour Alert Warning Point located in the Sheriff's Dispatch Center. Commercial phone is the back-up to the 5-Way Dedicated Telephone.

If the EOC is operational, the Radiological Officer will man the 5-Way Dedicated Telephone and make notifications as necessary, according to the level of emergency. If the EOC is not operational, the 5-Way Dedicated Telephone will be maintained by the Sheriff's Dispatch Center who will make the necessary notifications.

The initial notification message from the PNPP Control Room will be received and recorded on an Initial Notification Form. Initial notification will include a classification of the emergency, a description of the emergency condition and protective actions recommended by PNPP. The person receiving the message will read back information as necessary, to ensure the message is verified.

Follow-up information will be received and recorded on a Follow-Up Notification Message Form. Follow-up notification will include a classification of the emergency, protective actions recommended by PNPP and the basis for the recommendations, meteorological data, offsite release information, release rates, accident type, projected off-site doses, field survey data, estimates of surface contamination, general information and current plant status data. The person receiving the message will request clarification as necessary, to ensure the message is correct. Portions of the Follow-Up Notification Form may be computer generated and faxed to the EOCs.

Upon completion of an Initial Notification Form, the person receiving the message will ensure notification is made to the appropriate county agencies, organizations and individuals.

Protective Action Recommendations from the State of Ohio will be received and recorded on a State of Ohio Protective Action Recommendation Form. Bases for recommendations are; data received from the plant, field survey data, plant status, meteorological data, type of accident, and general information. If necessary, the person receiving the message will ask for clarification to ensure the message is correct.

During an HAB incident, these notifications may not follow standard licensee-to-county methods. Notifications from the county to PNPP will be made using standard communication protocols, which include caller verifications.

E.3 Agency Notification

After notification of the emergency classification from PNPP, notification of emergency response agencies and individuals will begin. The depth of notification is dependent on the Emergency Classification Level and/or at the discretion of the DES Director.

Once the notification is received by the agencies, each agency will initiate its own internal notification procedure based on the emergency classification level.

Notification will be made by use of the "Notification SOP" which is kept on file at the EOC and the Sheriff's Dispatch Center. The Notification SOP contains an updated listing of specific names, alternate contacts and phone numbers of emergency response agencies and individuals according to the emergency classification level.

E.4 Notification of the Public

E.4.1 Alerting

The public in the plume exposure EPZ in Geauga County will be alerted to an emergency at PNPP by use of a siren system. Sirens will be activated and appropriate EAS messages initiated after the protective action decision.

Back-up route alerting teams with mobile public address capability will travel through designated areas of the 10-Mile EPZ when the following conditions exist: 1) The GENERAL EMERGENCY level is reached; 2) There is a known "out of service" siren for that designated area, and 3) a protective action has been recommended for that designated area. "Out of Service" sirens are tracked in the Geauga County EOC from the last siren test and there is battery back-up and Control and Status Monitoring capability.

The teams will announce that there is an emergency and for individuals to tune to television or radio for emergency information.

The siren system will be activated for a GENERAL EMERGENCY and all protective actions involving the general public. The County Commissioners will coordinate the timing of the activation of the siren system with Lake and Ashtabula counties. This coordination will occur via the Executive Discussion Line (EDL). Lake County will activate the siren system at the coordinated and designated time. Should a malfunction occur, Geauga then Ashtabula County, in that order will activate the siren system.

As an alternative to the primary ANS, should it fail, Geauga County would use an outbound telephonic notification system to alert and notify the public in the Geauga County portion of the EPZ, as well as continue to broadcast the EAS message.

A silent test of the sirens is conducted every week and an audible test is performed quarterly.

In the unlikely event the PNPP would declare a GENERAL EMERGENCY or recommend a protective action prior to activation of the county EOCs, Lake County will sound all sirens and initiate the appropriate EAS message.

In the event a Hostile Action Based incident reaches General Emergency, coordinate with Incident Command to gauge whether activation of sirens or EAS could interfere with response actions being implemented. Other means of notification addressed in this section may be used.

E.4.2 Emergency Alert System (EAS)

The Emergency Alert System (EAS), Local Program Control Station will initiate broadcast of emergency messages to the public. EAS stations have the capability to broadcast emergency messages 24 hours a day, 7 days a week and have adequate signal strength to cover the 10-Mile EPZ. The National Oceanic and Atmospheric Administration (NOAA) will instruct the public to refer to an EAS station for emergency information, via Weather Radio.

There is an agreement among Geauga, Ashtabula and Lake counties and EAS stations to broadcast emergency information. LP-1 and LP-2 stations participate in the Central and East Lakeshore Ohio Operational Area EAS System Plan.

For an emergency at PNPP, Lake County will be the lead agency to activate the EAS for all three counties. In the event Lake County cannot fulfill its responsibility, Geauga then Ashtabula County, in that order, will become the lead county to activate the EAS. The EMA/DES Director or alternate, with approval from the County Commissioners, is authorized to activate EAS. In the event of a fast developing GENERAL EMERGENCY, the Lake County EMA Director or alternate or the on-duty supervisor of the Lake County Central Communications is authorized to activate EAS.

At the GENERAL EMERGENCY classification level, a message instructing the public to take a particular protective action will be broadcast as needed, typically every 15 minutes, until the protective action advisory is lifted. Geauga, Ashtabula and Lake counties will monitor EAS broadcasts to ensure the integrity of the information being provided. In addition, Public Inquiry and Media Monitoring personnel at the Joint Information Center (JIC) monitor television, radio and the Internet to identify any incorrect information. If information is incorrect, a spokesperson at the JIC will conduct a briefing of the media to correct the misinformation.

E.4.3 Special Notification

If necessary, special notifications for hearing impaired, sight/mobility impaired, large employers, campgrounds/recreation areas and group homes will be made by EOC Staff by telephone and/or by Thompson Fire Department, by telephone or in person. A list of sight/mobility, special needs and hearing impaired persons is kept in confidence at the EOC and the Thompson Fire Department.

Special notifications will also verify any transportation needs. Information will then be communicated to the Transportation Staging Area. Thompson and Montville Fire Department personnel operate a Transportation Staging Area at St. Patrick's Church, Thompson.

Hearing impaired persons will be instructed to seek assistance at the home of a neighbor or relative. If this is not possible, the special notification teams will re-notify the individual if the emergency escalates or when protective actions are recommended. Once notified, group homes, large employers, campground/recreation area staffs will then notify personnel of the emergency using internal procedures.

E.4.4 Warning

Once alerted, the public in the plume exposure EPZ will tune to an EAS station to receive warning messages.

EAS messages will be succinct, containing only sufficient information for people to take the appropriate action(s). For example, EAS messages for the public will: identify the authority issuing the message; identify the power plant, give the Emergency Classification Level (ECL) and a statement about the current status of conditions due to the emergency; give an evacuation or sheltering statement; call attention to REP-specific emergency information sources; and advise the affected and potentially affected population to stay tuned for more information.

Information generally not included in EAS messages but more suitable for Special News Bulletins or Special Information Bulletins may include but not be limited to: identification of protective actions for the general public; identification of care centers/monitoring centers for the general public; instructions on how to maximize protection when sheltering; provision of public inquiry numbers to the public; and reminders of what to take when evacuating.

All EAS messages will be coordinated and approved for release by the County Commissioners before they are broadcast, except in the event of a fast developing GENERAL EMERGENCY. In this situation, Lake County may activate the EAS system and issue an EAS message prior to activation of Lake, Geauga and Ashtabula counties' EOCs.

Coordination for EAS message content and selection will be conducted via the Executive Discussion Line (EDL). As lead county, Lake County will activate the EAS System. Copies of EAS messages released for broadcast will be sent to the PIO at the JIC by the PIO Liaison in the EOC.

Any EAS or SNB as the result of a hostile action based incident should be vetted through the Incident Command (IC) for security sensitive information before being released to the JIC.

Warning messages for schools, large employers, group homes, and campground/recreation areas will be completed by internal procedures once notification is received.

Ohio Emergency Management Agency (OEMA) is responsible for notifying the Federal Aviation Administration (FAA) and rail authorities to restrict air and rail traffic over and through the Plume Exposure EPZ. The U.S. Coast Guard, assisted by the Ohio Department of Natural Resources (ODNR) and Ohio Department of Transportation (ODOT) notifies boaters. NOAA broadcasts are also used for this notification via Weather Radios.

General public evacuees residing within the plume exposure EPZ in Thompson Township should evacuate south on State Route 528. If monitoring/decontamination or care center services are needed, they should report to the care center located at Cardinal High School, Middlefield.

E.4.5 Verification of Notification

The public will be instructed to provide visual indication that the alert and warning messages have been received and understood in the manner described in the Emergency Preparedness Information Brochure.

Teams will circulate through the 10-Mile EPZ when sirens are sounded at the GENERAL EMERGENCY classification. Teams will check residences and businesses to ensure they have been notified.

The teams will make personal contact with residences or businesses not notified and inform the individuals to tune in their televisions or radios for emergency information.

E.4.6 Alert/Warning Time Projection

The initial alerting siren signal and initial warning message will be delivered promptly on an area basis to the 10-Mile EPZ in Geauga County (Thompson Township) following the decision to notify the public of protective actions. The special arrangements described in E.4.1, E.4.2 and E.4.3 will assure 100% notification within approximately 45 minutes to the public.

F. EMERGENCY COMMUNICATIONS

F.1 Purpose

To describe the emergency communications networks available for use in Geauga County in the event of an emergency at PNPP.

F.2 Emergency Communications System

The following emergency communications system will be available in Geauga County. A link with each system described will be available in the Geauga County EOC.

+ Dedicated Telephone System

The 5-Way Dedicated Telephone Line is the means by which the Perry Nuclear Power Plant will provide incident notification, incident classification and follow-up information to Geauga, Lake, and Ashtabula counties and the State of Ohio. This telephone will also serve as the primary radiological information channel during the incident.

Extensions are located in the following facilities:

- (1) PNPP Control Room,
- (2) PNPP Technical Support Center
- (3) PNPP Simulator (for drill use only)
- (4) PNPP Emergency Operations Facility
- (5) Lake County Communications Center
- (6) Lake County Emergency Operations Center
- (7) Geauga County Sheriff's Dispatch Office
- (8) Geauga County Emergency Operations Center
- (9) Ashtabula County Sheriff's Communications Center
- (10) Ashtabula County Emergency Operations Center
- (11) Ohio Emergency Management Agency
- (12) The Ohio State Highway Patrol, District 28.

Response organizations not answering a notification call will be contacted by PNPP via an alternate communication method.

+ Special Telephones

The Executive Discussion Line (EDL) consists of a special telephone in Geauga, Lake and Ashtabula counties' EOCs, the State EOC in Columbus and PNPP's EOF. Executive groups in the counties can coordinate protective action decisions with each other, with input from the State via the EDL. PNPP may also be brought into the conversation for information, if requested. Generally, Lake County will activate the EDL conference call.

The JIC Telephone provides a link between the Geauga County EOC and the Joint Information Center (JIC). Updates on emergency status and county response and public information activities between the EOC and JIC will be communicated over the JIC Telephone by the PIO Liaison in the EOC and the PIO at the JIC.

A Satellite Phone is available in the Sheriff's Dispatch and the EOC for use when all other phone communications are lost.

+ Regular Telephone

Regular telephones have been installed in the Geauga County EOC to provide communication among EOC staff, between staff and field agencies and for the notification of some staff and field agencies. All the EOC response staff will have telephones for use as a primary mode of communication.

+ Radio

Two-way radio communications equipment is available in the EOC. Radio will be used as the primary mode of communication for directing field response agencies. The Geauga County Amateur Radio Association (GARA) will provide communications support to the EOC for communications between the EOC and care centers. EOC dispatchers will provide support in radio operations.

+ Pager/Cell Phone

Pagers/cell phones may be used to notify EOC Staff and other designated individuals or agencies.

+ Fax

Fax machines are installed in the EOC and the Sheriff's Dispatch area; they are used primarily to receive and transmit emergency information from PNPP, the JIC, Lake and Ashtabula counties' EOCs and OEMA. Also, the fax machines will be used to send EAS messages to the PIO so information on EAS statements can be released to the press.

+ AM/FM Radio and TV

Television and AM/FM radio are available in the EOC for monitoring EAS statements and news releases made by local and national television/radio stations. The PIO Liaison, working with the Executive Group, the Public Inquiry workers and key EOC staff, is responsible for monitoring television and radio broadcasts in the EOC.

+ Data

The EData allows the State, Lake and Ashtabula EMAs and Geauga DES to access selected plant data on an approximate real time basis.

County officials can communicate with Federal response organizations through the Ohio EMA. See the State Plan for information.

The EOC communication links and the methods used for agency notification and communication are shown in the Appendices.

F.3 Staffing of Communication System

The Sheriff's Dispatch Center is staffed and operational 24 hours a day, thereby ensuring that notification from PNPP will be received and that continuous coverage of the 5-Way Dedicated Telephone Line is maintained until the EOC is activated.

The initial notification of an emergency at PNPP will be received in either the Sheriff's Dispatch Center or at the EOC on the 5-Way Dedicated Telephone Line. As a backup, the initial notification may be relayed by commercial telephone, fax or radioed by other notified counties. The responsibility for 5-Way line monitoring and emergency communication/notification will be coordinated by the Communications Officer.

F.4 Message Center

The EOC Staff will use Storm Chaser messaging to send and receive message within the EOC. Messages received from outside the EOC will be logged and maintained by the Message Center. The Historian will maintain the EOC Message Log and ensure key events and emergency status boards are kept up to date. Storm Chaser allows the history of the event and messages to be saved for historical purposes.

F.5 Interagency Communications

The Sheriff's Dispatch Center and the EOC will have the capability to communicate with other response agencies as shown in Appendix 12.

F.6 Communications with Medical Units

EMS units have communications capability with hospitals, fire departments, police departments and the county EOC.

School buses and Geauga Transit vans equipped to carry wheelchairs have radio communications with the County EOC. The Geauga Transit office and specified transportation supervisors of school districts have communications with the EOC by telephone and radios. The EOC has telephone and radio communications with UH Geauga Regional Hospital.

F.7 Testing the Emergency Communications System

The entire emergency communications system will be tested as described in Section N.

G. PUBLIC EDUCATION AND INFORMATION

G.1 Purpose

To describe the process for providing information to the public on a periodic basis about how they will be notified and what their initial actions should be in an emergency; to establish the principal points of contact with the news media for dissemination of information; and to describe the procedure for coordinated dissemination of information to the public.

G.2 Public Education and Information

A Public Information and Education Program for members of the general public, including transients, within the 10-Mile Emergency Planning Zone (EPZ) surrounding the Perry Plant has been established in coordination with the State of Ohio, Geauga and Ashtabula counties and the Perry Plant. The Public Information and Education Program includes the following methods for dissemination of information related to a nuclear emergency at the Perry Plant.

Emergency Preparedness Information Brochure

An Emergency Preparedness Information (EPI) brochure is distributed annually to residents within the 10-Mile EPZ or anytime, upon request. This ensures that new EPZ residents are informed of emergency planning information and captures emergency planning information changes in one published document. The EPI Brochure is the primary source of public information. The brochures provide members of the general public with information on the following:

- educational information on radiation;
- contact for additional information;
- protective measures, evacuation routes, care centers, sheltering, respiratory protection, and Potassium Iodide (KI) information;
- special needs for the disabled.

School Letters to Parents

Information in either the form of a letter or an information packet is sent annually by the school districts to parents of school children in both risk and receiving schools.

Web Page

The EPI Brochure in its entirety and the means to update the Special Needs Card is available on the county's Department of Emergency Services website.

Information for the Transient Population

Posters that give emergency information for the transient population in that portion of Geauga County that lies within the 10-Mile EPZ are posted on the sirens and throughout the parks. The posters instruct the transient population to tune to an Emergency Alert System station for information on the emergency. Also, special notification is made to the park by the Thompson Fire Department by telephone and in person, if need be. This information is updated annually, as needed, and the materials are replaced as required.

G.3 Public Information During an Emergency

The Geauga County Public Information Officer (PIO) has the primary responsibility for providing information to the public in the 10-Mile EPZ in Geauga County. The PIO will be assisted by the DES Director and PIO Liaison and will receive any necessary support from PNPP.

Public information during an emergency will be disseminated from the Joint Information Center (JIC) which is located at the Auburn Career Center in Concord, OH. The JIC is operated and maintained by Energy Harbor. The JIC is the point of contact with news media representatives for Geauga County after the JIC is activated, which may occur at the ALERT or SITE AREA EMERGENCY classification. In the event the JIC is not activated, the PIO may disseminate information from the EOC.

After the JIC is activated, the PIO will report to the JIC. The PIO will coordinate public information and news releases with representatives from Lake and Ashtabula counties, the State, PNPP and the Incident Command. The PIO will maintain telephone communications with the PIO Liaison in the Geauga County EOC to ensure that information is readily available. The PIO Liaison ensures that the EOC Executive Group is aware of information being released to the news media. The Commissioners will be aware of and approve any news releases that affect Geauga County prior to dissemination to the news media. The PIO will receive information from the PIO Liaison via the JIC Telephone. Copies of EAS messages will also be sent to the PIO by the PIO Liaison via electronic communications.

If the Geauga County Commissioners determine a need to issue news releases prior to activation of the JIC, these releases will be made by the PIO at the Geauga County EOC. To the extent practicable the Commissioners will coordinate any such news releases with Lake and Ashtabula counties.

PNPP will provide clerical support for the Geauga County PIO at the JIC. After the PIO goes to the JIC, any residual public information duties to be performed at the county EOC will be performed by the PIO Liaison.

G.4 Public Inquiry

Public Inquiry will be maintained by use of a phone line in the EOC. Public Inquiry personnel are continuously updated on the status of the emergency and are capable of answering questions relative to the emergency. The PIO Liaison coordinates information frequently with the Public Inquiry personnel and key EOC staff.

Public Inquiry telephones will also be operated at the JIC by PNPP and by the State, Lake and Ashtabula counties from their respective locations. Telephone numbers for the hotlines are listed in Emergency Public Information materials and will be provided to the public through news releases.

Public Inquiry personnel are trained to identify trends in the questions asked of them that indicate the presence of misinformation and to report them to the PIO Liaison for clarification to the public.

G.5 News Media Updates

At least once a year a media briefing or direct distribution of written materials will be provided for members of the news media. This information will be for the purpose of acquainting the media with such subjects as emergency plans, radiation, nuclear power, activation and operation of the JIC, and points of contact for the release of public information during an emergency. PNPP will be the lead group for preparing and conducting these updates with representation from Geauga, Lake, and Ashtabula counties, the State and FEMA included.

H. EMERGENCY FACILITIES AND EQUIPMENT

H.1 Purpose

To identify facilities and equipment available to support the Geauga County response to an emergency at PNPP. To establish the staffing pattern for the Geauga County Emergency Operations Center.

H.2 Gauga County Emergency Operations Center

The Geauga County Emergency Operations Center (EOC) is located at 12518 Merritt Road in Claridon Township, Ohio. The Geauga County Department of Emergency Services (DES) operates in the EOC facility during normal (non-emergency) periods. The DES maintains the EOC and operates it during emergencies, ensuring that it remains operational 24 hours a day throughout the emergency period. The Appendices contain the EOC Floor Plan.

H.2.1 Facility

The EOC is the facility where direction and control of response functions are conducted. It provides a work area for personnel during emergencies.

H.2.2 Facility Equipment

Some of the equipment, communications, maps, and status boards in the EOC are listed below.

- Tables and chairs
- Regular telephones (approximately 30)
- Satellite Radio
- 5-Way Dedicated Telephone Line (dedicated telephone line from PNPP to State EOC, Lake, Geauga and Ashtabula counties)
- Executive Discussion Line (EDL) (telephone that links Geauga, Ashtabula and Lake counties; State EOC and PNPP.
- EAS Sage Encoder
- JIC Telephone (link to Joint Information Center)
- Siren encoder
- Paging system
- Multi-Agency Radio Communications System (MARCS)
- Outbound telephonic notification system
- VHF & digital radio communications and amateur radio communications equipment

- Maps and status boards
- Television and AM/FM radio
- Emergency plans and SOGs
- Computers, printers and electronic office equipment
- First-aid kit
- Photocopying machines and facsimile machines
- Private area for Executive Group
- Radiological, clerical and communications supplies

Restroom facilities, including showers, are readily available to the EOC, as is room for food. Emergency diesel generators provide backup power to the EOC in the event the normal power source is lost.

H.2.3 EOC Security

EOC security may be established during an emergency. Security Officers will issue badges to all persons authorized or approved entry by the DES Director. EOC staff will be identified by use of positive identification such as driver's license or photo I.D.

H.3 Activation and Staffing

The EOC may be partially activated for an Alert. It will be activated for a Site Area Emergency or General Emergency. The DES Director will activate and direct the operations of the EOC. The EOC will be declared operational when all key staff based on the emergency is present.

H.4 Emergency Equipment

There are several types of emergency kits in Geauga County.

- + Personnel Decontamination Kit
- + Red Cross Mass Care Kit
- + Personnel Radiological Protection Kit

The Appendices contain information on the type of kits in Geauga County. Detailed inventories of these kits are contained in the kit or applicable SOGs. If respiratory equipment is needed, local fire departments are equipped with self-contained breathing apparatus (SCBA).

H.4.1 Radiological Emergency Equipment

Radiological monitoring equipment is provided to local emergency response agencies. The number and contents of the equipment distributed in the county are based on the emergency response duties of specific agencies. Dosimetry packets will also be available for emergency workers. Packet contents are listed in the Appendices.

Agencies' Dosimetry Coordinators are instructed to inventory and operationally check all survey equipment quarterly. Radiological monitoring kits issued to local emergency response agencies are calibrated or exchanged annually. Dosimetry packets are inventoried and operationally checked prior to and after each use. Direct-reading dosimeters are calibrated and leak tested annually; permanent record dosimeters (PRDs) are replaced annually. Maintenance of this equipment is the responsibility of the OEMA Resident Radiological Analyst.

In addition to the State issued radiological instrument sets, emergency responders around PNPP use portal-monitoring equipment. Local safety forces responsible for radiological monitoring and decontamination of emergency workers and the general public use portal monitors. The portal monitoring equipment meets the Federal Emergency Management Agency (FEMA) standard for portal monitors as stated in the Federal Register and is specifically designed for use by offsite emergency responders.

Portal monitors are available for use at facilities throughout Lake, Geauga and Ashtabula counties that are designated as general public care centers or emergency worker monitoring stations. A comprehensive training and inspection program for the portal monitoring equipment has been designed in cooperation with Lake and Ashtabula counties and OEMA. The use of portal monitors greatly reduces the initial monitoring time and procedural staffing requirements for local safety force personnel.

H.5 Central Location for Receipt and Coordination of Field Monitoring Data

Geauga County does not perform radiological field monitoring and thus has no provision for a central location for the receipt and analysis of field monitoring data and the coordination of sample media. However, OEMA will relay information pertinent to Geauga County to the County Radiological Officer. The information will also be monitored at the EOF.

Coordination of the collection of sample media of State and Lake County monitoring teams in Geauga County is discussed in the State of Ohio Plan for Response to Radiation Emergencies at Licensed Nuclear Facilities.

I. ACCIDENT ASSESSMENT

I.1 Purpose

To describe the accident assessment and radiological monitoring activities in that portion of the 10-Mile Emergency Planning Zone (EPZ) in Geauga County.

I.2 Radiological Monitoring and Accident Assessment

The Ohio Department of Health (ODH)/Ohio Emergency Management Agency (OEMA) share responsibility for accident assessment in the 10-Mile EPZ. The County will provide logistical support for these activities as requested and as available. ODH is responsible for supplying Potassium Iodide (KI) to the Ohio Emergency Management Agency (OEMA) Resident Radiological Analyst for pre-distribution to emergency workers, staff at institutions and the institutionalized, in advance of an incident. ODH has also made KI available to the general public; local health districts/departments will have a supply available at care centers if an evacuation is recommended.

ODH/OEMA may send field monitoring teams equipped with radiological survey instrumentation to that portion of the 10-Mile EPZ in Geauga County, following the declaration of an Alert or higher level of emergency at PNPP. These teams will report to a staging area designated by OEMA.

The OEMA/ODH will dispatch radiological emergency response teams to designated field monitoring locations to monitor for radioactive releases with instruments that have the capability to detect and measure radioiodine concentrations in the air as low as 1×10^{-7} microcuries per cubic centimeter in any weather.

The State dose assessment team will assess the hazard consequences of any radiological releases from PNPP based on ODH/OEMA field monitoring results and data from PNPP. This assessment will be given to the Governor or his representative at the State EOC. The Governor or his representative, in consultation with other members of the Executive Group, will formulate recommendations for protective actions. These recommendations will be transmitted to the Geauga County Executive Group (and to Lake and Ashtabula counties) using the State of Ohio Protective Action Recommendation form and the Supplemental Action form. The recommendation for the general public, emergency workers and institutionalized to take KI will be made by ODH at the General Emergency classification.

Monitor readings may also be taken by the Lake County Health District's field monitoring team(s). Information will be transmitted to the Lake County EOC and shared with the State EOC, Ashtabula and Geauga EOCs and PNPP, upon request.

The Geauga County Commissioners will use State and PNPP recommendations, along with other information, as the basis for determining protective action decisions for the public in the 10-Mile EPZ in Geauga County, and will coordinate with the other counties to the extent practicable.

J. PROTECTIVE RESPONSE

J.1 Purpose

To describe the process for choosing the protective actions to be taken in Geauga County in response to an emergency at PNPP. To describe these protective actions and the means for carrying them out.

J.2 Potential Protective Actions

a. Plume Exposure Pathway EPZ (10-Mile EPZ)

There are two protective actions for the public in the 10-Mile EPZ that might be recommended by the County Commissioners.: Sheltering or Evacuation. Potassium Iodide (KI) may be recommended as a supplement to these.

Sheltering may be recommended for a rapid passage of a plume or when weather conditions indicate that sheltering would be the most effective protective response. If sheltering is the protective response adopted, the public will be instructed to do the following:

- Go indoors, preferably to basements or interior rooms and remain there until notified otherwise;
- Close all doors and windows;
- Turn off air conditioners, ventilation systems, and window fans;
- Adjust thermostat settings to minimize air intake;
- Monitor an EAS station for information.

Evacuation involves instructing the public to leave the affected area along designated evacuation routes. Residents outside the area affected by the evacuation may be instructed to go indoors and monitor an EAS station.

As a supplement to Evacuation or Sheltering, provisions have been established for ODH to recommend the ingestion of KI by the general public, emergency workers and the institutionalized and staff in the affected subareas.

b. Ingestion Exposure Pathway EPZ (50-Mile EPZ)

The State of Ohio has primary responsibility for determining protective actions in the 50-Mile Ingestion Exposure Pathway EPZ. Agricultural information will be maintained by the State; and for ingestion activities Geauga County will respond to requests from the State for information and action at the time of the emergency. The Ohio State University (OSU) Extension Agent, in coordination with the Ohio Department of Agriculture, will contact large crop and milk producers in Geauga County to ensure food production is halted and livestock and poultry are given stored feed and protected water.

Some protective actions that might be recommended include taking livestock and poultry off pasture, sheltering them whenever possible, feeding them uncontaminated food, and using protected water supplies rather than surface water. Additional protective actions that might be taken are:

- Bringing in uncontaminated grain from outside the EPZ;
- Decontaminating or destroying food known to be or suspected to be contaminated;
- Restricting access to certain areas;
- Temporary embargo;
- Relocation.

Protective actions for the Ingestion Exposure Pathway EPZ are further described in The Ohio Plan for Response to Radiation Emergencies at Licensed Nuclear Facilities.

J.3 Determination of Protective Actions

Responsibility for protective action decisions in the Plume Exposure Pathway EPZ of Geauga County rests ultimately with the Geauga County Commissioners. They reach their decisions by weighing information and recommendations from the State, PNPP, local sources and the Geauga County EOC Staff. The decision-making process involves weighing the benefits to be gained versus the risks involved in a particular action.

The County Commissioners will also consider Protective Action Guides for the Plume Exposure Pathway EPZ, as described in "EPA-400-R-92-001, Manual of Protective Action Guides and Protective Actions for Nuclear Incidents", and Protective Action Guides developed by the FDA for the ingestion of food, water, and milk.

Some of the variables that will be considered in making decisions regarding protective actions for the 10-Mile EPZ are:

- Projected and actual radiation dose;
- Portion of the 10-Mile EPZ at risk;
- Time available to take an action that could reduce radiation doses significantly;
- Exposure pathway;
- Resources available;
- Local weather and/or road conditions.
- PAD driven by EAL without release of radiation.
- Will the PAD put the general public in danger in the event of a hostile based incident (evacuation routes or sheltering inside Incident Command controlled area)

Following receipt of a protective action recommendation from PNPP, the Geauga County Commissioners will discuss various protective action options with the Lake and Ashtabula counties' Commissioners. The Geauga County Commissioners will wait a reasonable amount of time for the State to issue its protective action recommendations based on the data received before initiating protective actions at the county level. However, if there is a delay in the protective action recommendation from the Office of the Governor, the Commissioners of the three counties may determine protective actions based upon the PNPP recommendation and local conditions.

Following receipt of a protective action recommendation from the State, the County Commissioners will compare PNPP's recommendation with the Governor's Office recommendations and then, in coordination with Lake and Ashtabula counties' Commissioners promptly decide on a protective action, related EAS message and time for siren activation.

If the counties cannot agree upon a coordinated protective action decision, a decision will be made in accordance with the more conservative protective action recommendation received from the State or PNPP, provided that the more conservative protective action would involve an area within either Geauga and/or

Ashtabula counties. The more conservative recommendation may be evacuation rather than sheltering and/or involve a larger geographic area. Lake County would have the right of decision if the protective action recommendations of both PNPP and the State involve Lake County only.

In the event of a Hostile Action Based incident any PADs would be coordinated with the Incident Command. An HAB PAD may only impact immediate area around facility if there is no radiological release or the potential is low for a release.

The data to help with consideration of some of these variables will be collected by State, Federal, Lake County and PNPP field monitoring teams at various radiological sampling and monitoring points throughout the 10-Mile EPZ.

J.4 Sheltering

If the County Commissioners recommend sheltering for Subarea 5, which is the only subarea in Geauga County, the sheltering protective action will be communicated to the public as indicated in Section E. Key EOC staff will notify all agencies and individuals. When notified by EAS, the public will be advised to take individual protective actions such as going indoors and closing all doors and windows. Actions for the public to take are listed in the Emergency Preparedness Information Brochure. Emergency workers inside the 10-Mile EPZ will be informed of the sheltering recommendation and will monitor radiation exposure levels through use of direct-reading dosimeters. Emergency workers will shelter unless they are conducting an emergency response activity.

The Geauga County Engineer/Transportation Officer will provide barricades and signs for access control points. The Law Enforcement Coordinator will coordinate Access Control Point activation with the Law Enforcement Coordinators in Lake and Ashtabula counties. The Fire/EMS Coordinator will ensure that the Thompson Fire Department notifies special needs residents of the sheltering recommendation and that the Transportation Staging Area at St. Patrick's Church, 16550 Rock Creek Road, Thompson, Ohio, is ready for activation.

J.5 Evacuation

If the County Commissioners recommend evacuation to protect the public in the 10-Mile EPZ in Geauga County, the transient and resident population in Thompson Township will be notified and provided information as described in Section E.

The area of Geauga County that is within the plume exposure pathway EPZ for PNPP includes most of Thompson Township. The closest point in Geauga County to PNPP is six miles from the plant. Approximately 2000 residents of Geauga County live within the plume exposure pathway EPZ.

J.5.1 Transportation

Most of the evacuating population will travel in their own vehicles, driving out of the EPZ, using the evacuation routes shown in the Appendices.

The non-auto owning population in Geauga County may telephone the Geauga County EOC's Public Inquiry number listed in the Emergency Public Information brochure, if transportation is needed. There are sufficient numbers of buses, ambulances and wheelchair vans to transport the non-auto owning population, school children and mobility impaired persons. Vehicle support resources will be sent to the Transportation Staging Area. The Transportation Staging Area Attendant will then assign a specific vehicle based on needs to provide transportation.

Berkshire School District buses will assemble at the Transportation Staging Area at Site Area Emergency or General Emergency as needs are identified by the EOC Transportation Officer.

Bus drivers will report to the Transportation Staging Area to assist in evacuation of the general public. Upon completion of bus driver duties, bus drivers will report to an Emergency Worker Decontamination Station. A letter from the Ohio Department of Education for school bus use for evacuation is cited in the Appendices.

There are no health care facilities at risk in Geauga County. However, Geauga County provides host facilities for several risk health care facilities located in Lake and Ashtabula counties. Ambulances are available in the case of evacuation and will be directed to the Transportation Staging Area at St. Patrick's Church. If necessary, ambulance crews will be instructed

to report to an Emergency Worker Monitoring and Decontamination Station upon completion of duties.

Special needs residents have been identified in advance by Thompson Fire Department survey and by personal response to "Special Needs Response Cards" in Emergency Preparedness Information materials. A list of special needs residents is kept in confidence at the Thompson Fire Department and at the EOC. There are sufficient ambulances and wheelchair vans to transport Geauga County's special needs population located within the EPZ. Transportation resources for special needs residents will be directed from the Transportation Staging Area. Upon completion of transportation of special needs populations, drivers will be directed to an Emergency Worker Monitoring and Decontamination Station, as necessary.

J.5.2 Traffic and Access Control Points

As part of the response to the evacuation recommendation, the Law Enforcement Coordinator will activate traffic control points, in coordination with local law enforcement agencies. Officers will direct evacuees to evacuation routes and ensure traffic flows in a smooth, uninterrupted manner. Traffic control personnel are not sources for general public information. EAS, JIC news releases and Public Inquiry provide information to the public.

The Law Enforcement Coordinator will activate access control points, in coordination with local law enforcement agencies. Officers will ensure individuals do not enter evacuated or sheltered areas. The County Engineer/Transportation Officer will provide barricades for those access control points that are unmanned. Any resources needed to clear roads will be requested from and provided by the County Engineer/Transportation Officer. Assistance in clearing roadways can be obtained through the State of Ohio, ESF-1, Transportation, of which the primary agency is Ohio Department of Transportation (ODOT).

The Law Enforcement Coordinator will coordinate access control point activation with the Law Enforcement Coordinators in Lake and Ashtabula counties. Access Control Points and Traffic Controls Points are listed in the Appendices.

In a Hostile Action Based incident the Incident Command may request Traffic and Access Control to be established to secure the crime scene or to keep public and media out of danger.

J.5.3 Receiving Schools

In the event schools relocate at the Site Area Emergency or an evacuation protective action is recommended while school is in session, arrangements have been made for each school (grades K-12) within the 10-Mile EPZ to relocate to a receiving school outside the 10-Mile EPZ, where students can await pick-up by parents or guardians.

Parents are informed of their child's receiving school via an annual letter to parents from school officials, news releases from the JIC at the time of the emergency, by reference of Emergency Preparedness Information in the Emergency Public Information Brochure.

Public school superintendents in coordination with the EOC Engineer/Transportation Officer and Schools' Services Rep are responsible for ensuring the notification, transportation and relocation of private schools, as well as public schools in their districts. There are no private schools in Thompson Township.

Those students who have not been picked up within a reasonable amount of time will be provided transportation to the Care Center at Notre Dame Cathedral Latin High School.

J.5.4 Reception/Care Centers

The primary Reception/Care Centers will be available to receive, monitor, decontaminate, register, lodge and feed evacuees who require these services. The primary and alternate Care Centers will be operated and managed by an American Red Cross (ARC) Shelter Manager who is responsible for all ARC Care Center operations.

Fire department personnel will provide radiological monitoring and decontamination services. They will also implement emergency victim care, handling contaminated/injured persons, and transportation attendant procedures.

The American Red Cross Shelter Manager will coordinate the use of school facilities with school district personnel and the Geauga County Health District, who conducts hygiene and sanitary inspections upon request.

ARC will register all evacuees using their Care Center Registration Form. The registration form will be used for an evacuee location service. ARC will also provide nursing support; coordinate feeding supplies and services; coordinate social services with the ARC Liaison in the EOC.

Emergency medical support will be provided by the local fire department assigned to the Reception/Care Center. Communication will be provided by the amateur radio personnel, fire and/or police radios, Geauga County DES radios or school telephone. Police departments will provide Reception/Care Center security and conduct routine patrol of building grounds and facilities. The Cleveland Chapter of the American Red Cross will provide logistical support for Care Center operations.

NOTE: Only certified Service Animals are permitted at Reception and Care facilities.

J.5.5 Public Monitoring and Decontamination

Monitoring/decontamination stations at primary Reception/Care Centers may be staffed at Site Area Emergency and activated at General Emergency. Team leaders will report staffing to the EOC Radiological Officer. When notified by the EOC that a "release is in progress", the team leader will activate the monitoring/decontamination station at the Reception/Care Center.

When members of the general public arrive at a primary Reception/Care Center, they will be monitored for contamination by local fire department personnel using radiological monitoring equipment. Any evacuees having contamination levels exceeding the limits will be decontaminated using the same method as specified in Section K of this document. After two attempts at decontamination, any individual with contamination meeting or exceeding the limits will be referred to UH Lake Health or other designated medical facility for further evaluation.

Any personal belongings found to be contaminated will be impounded and bagged for later decontamination. A receipt describing the contents and value of the item impounded will be provided to the evacuee by a local firefighter.

Any individual surveyed whose initial reading meets or exceeds contamination levels referenced in the Appendices will be decontaminated then sent to a designated medical facility to be checked for internal contamination and to have a whole body count performed. Medical facilities will be determined at the time of the emergency in coordination with state, federal, and utility authorities. The County RO and ODH will monitor the individual's condition.

After decontamination, evacuees will be directed to Care Center registration tables operated by the ARC. Evacuees not requiring decontamination will be directed into the Care Center for registration. All persons must show a copy of the Personnel Monitoring Record that indicates they are not contaminated.

Vehicles, equipment, and guide animals will also be monitored for contamination at Reception/Care Centers. Monitors will pay close attention to grills, door handles, front bumpers, tires and other areas suspected of being contaminated. Air intake systems and air filters will not be monitored. Any vehicle area, equipment, or guide animal found to be contaminated above the limits will be decontaminated. Local fire departments will use the equipment necessary to perform monitoring and decontamination of evacuees, vehicles, equipment, and guide animals at Reception/Care Centers.

The OEPA will determine a means for the disposal of waste generated by the offsite radioactive decontamination process in coordination with ODH and the utility. Water used may be directed to any existing drain system.

Reports on the activities of monitoring/decontamination at primary Reception/Care Centers will be made to the County RO in the EOC; this includes contamination exposure and requests for technical assistance. The County RO will keep the EOC Executive Group updated on monitoring and decontamination activities.

The primary Reception/Care Centers are staffed with the personnel and equipment capable of monitoring 20% of the EPZ population within about a 12-hour period.

J.6 Monitoring and Decontamination of School Children

In the event an evacuation protective action is recommended when school is in session, any student within the exposure pathway that may have been or has actually been exposed to contamination will be promptly monitored and decontaminated, if necessary.

Should a release be imminent or in progress, the County RO will advise school transportation supervisors of this condition. School buses would be diverted to a designated Reception/Care Center where monitoring and decontamination provisions are available.

Perry School District students and staff will be monitored and decontaminated by the Chardon Fire Department at the Chardon High School Emergency Worker Monitoring and Decontamination Station. The Chardon School District is the receiving school district for Perry School District. Perry School District buses are staged at the St. Mary's School parking lot and will be monitored by the fire department, after persons are monitored.

Should the buses be diverted from a designated receiving school to a Reception/Care Center, all students will remain there to be reunited with their families. Parents or guardians will be notified of the new center at which their children will be located. This will be accomplished by Special Information Bulletins (SIBs), information at the Public Inquiry position in the EOC and direct contact by school officials to parents.

J.7 Security Patrols

Security patrols of evacuated areas will be conducted by assigned police departments, Sheriff's Office and with assistance obtained through ESF-13, Law Enforcement, of which the primary agency is OSHP. The Law Enforcement Coordinator in the EOC will coordinate the assignment of security patrol personnel with the responsible EOC staff and the local police chief. The Law

Enforcement Coordinator will ensure that security patrol personnel are advised of "contaminated areas" as advised by the County RO. Security patrols will ensure those persons in the evacuated areas have a Restricted Zone Pass and dosimetry.

J.8 Evacuation Time Estimates

The time estimate for evacuation, traffic capacity of evacuation routes and subarea population estimates is kept under separate cover on file at the EOC.

J.9 Potassium Iodide Distribution and Ingestion

The Ohio Department of Health (ODH) may recommend the ingestion of Potassium Iodide (KI) at the General Emergency classification for persons in those subareas that are being Evacuated or Sheltered.

KI ingestion can be accomplished by the following methods:

- Those persons who obtained KI through the pre-emergency distribution will have it on hand and can ingest it during an Evacuation or Shelter advisory.
- Schools and large employers that have obtained KI during the pre-emergency distribution will administer KI according to their internal guidelines.
- KI will be available for distribution by local health districts at the Care Centers.

Emergency workers, institutionalized personnel and staff have been provided a predetermined amount according to agency numbers and should take KI only when recommended by the ODH and notified by the county Radiological Officer.

K. RADIOLOGICAL EXPOSURE CONTROL

K.1 Purpose

To describe the radiological monitoring and exposure control for emergency workers, contamination monitoring and decontamination of personnel and equipment, radioactive contamination control, and disposal of contaminated materials from monitoring/decontamination centers.

K.2 Dosimetry Equipment

Dosimetry equipment for emergency workers to measure exposure to external ionizing radiation will be predistributed to each response agency with emergency responsibilities inside the 10-Mile Emergency Planning Zone (EPZ) and at monitoring/decontamination stations. Agency Dosimetry Coordinators are responsible for distribution of dosimetry packets to their personnel at the time of an emergency. Each emergency worker will be issued a dosimetry packet appropriate for their duties. Dosimetry can also be issued at the EOC, another facility so designated or the Reentry Verification and Orientation Center (REVOC) to persons who must enter the Restricted Zone. "On-the-spot" training will be provided when the dosimetry is issued.

Each EOC has a supply of additional Dosimetry packets to be utilized for mutual aid agencies, as replacements or to supplement equipment needs for any radiological incident upon request.

Additional dosimetry for emergency workers can be obtained from supplies located at the other nuclear counties located in Ohio and from the State of Ohio. The Executive Group would make requests for the additional dosimetry to the State of Ohio.

The emergency worker's dosimeters will be placed in an easily accessible upper torso position. The emergency worker will review the Dosimetry Report Form and Instructions on the reverse side, fill out the form, carry it while in possession of dosimetry and complete it at the end of their shift. Dosimetry equipment is to be worn at all times while performing duties inside the 10-Mile EPZ or where exposure is possible, such as decontamination duties.

K.3 Records

Records of radiation exposure measured by direct-reading dosimeters and by Permanent Record Dosimeters (PRDs) will be maintained by the issuing agency or the individual, the County RO and the Ohio Department of Health (ODH). The

issuing agency will maintain an “Emergency Worker Dosimetry Packet Issue and Exposure Log” which will record names of emergency workers, mission, location time, initial readings, additional readings and mission total.

Upon termination of emergency duties, the emergency worker will retain a copy of the completed Dosimetry Report Form for their organization's personnel file. The Agency's Dosimetry Coordinator will coordinate with the County RO to ensure all dosimetry packets are returned to the Ohio Emergency Management Agency (EMA) Resident Radiological Analyst (RRA). The equipment should be returned in the original box issued to the department. Emergency workers may be required to retain KI tablets if ODH recommends a continued administration. A NVLAP (National Voluntary Laboratory Accreditation Program) certified vendor will process the PRDs; the County RO will ensure processing results are distributed to the emergency worker and the emergency worker's organization.

K.4 Dosimetry Reading and Exposure Reporting

All agencies will have a Dosimetry Coordinator who is responsible for monitoring emergency worker exposure levels, updating emergency workers with changes in their Dosimeter Limit/Turn-back Value and taking the actions necessary to ensure emergency worker exposure is minimized. Emergency workers will report their dosimeter readings to the Dosimetry Coordinator at the designated intervals. Personnel who cannot read their dosimeters at the designated time due to their activity, such as driving a bus from a risk school to a receiving school, will read and report at the first available opportunity.

K.5 Exposure Control and Limits

Protective Action Guidelines (PAGs) for emergency workers are identified in the Appendices. Emergency workers will report their dosimeter readings to the Dosimetry Coordinator at the designated intervals.

Persons less than 18 years of age, pregnant females and those allergic to iodine will not be assigned duties in a radiological emergency which involves potential radiation exposure.

Agencies' Dosimetry Coordinators will monitor personnel doses and ensure doses are kept as low as reasonably achievable by routing vehicles around radiologically contaminated areas where practical, minimizing time spent in a radiation area, and rotating personnel as often as possible.

If an emergency worker is involved in a lifesaving activity or protection of large populations and cannot be relieved, the agency's Dosimetry Coordinator will contact the EOC's Radiological Officer who will then contact ODH and request approval for the individual to receive exposure beyond the Dosimeter Limit/Turnback Value. The emergency worker may continue only after being formally briefed by an ODH representative and made fully aware of the risks of a radiation dose of that magnitude.

K.6 Monitoring for Radioactive Contamination

Emergency workers in Geauga County will be monitored for radioactive contamination at the completion of their mission.

Emergency worker monitoring/decontamination stations may be operational at Site Area Emergency, if needed to monitor PNPP personnel evacuated from site, or General Emergency when informed by the County RO. The County RO will provide technical guidance and will periodically contact monitoring/decontamination team leaders to obtain information on exposure levels and team activities.

Upon arrival at a monitoring/decontamination station, emergency workers will be directed to the appropriate monitoring locations by monitoring team members. Each individual will be monitored for external contamination using portal monitor equipment and survey meters. If the portal monitor alarms or monitoring for contamination reveals contamination levels greater than 300 cpm above background, emergency workers must be decontaminated.

Any emergency worker whose initial reading is 3000 cpm or greater on designated areas of the body will be decontaminated, then referred to a medical facility for a whole body count and to be checked for internal contamination. Medical facilities will be determined at the time of the emergency in coordination with State, federal and utility authorities.

Personal belongings, vehicles and equipment will also be monitored. Any personal belongings with contamination levels of 300 cpm or more above background will be impounded and bagged for later decontamination. A member of the monitoring/decontamination team will provide to the emergency worker a receipt describing the contents and value of the item impounded.

K.7 Decontamination

If the portal monitor alarms or monitoring for contamination reveals contamination levels greater than 300 cpm above background, emergency workers must be decontaminated. Contamination will be removed if easily removable. Emergency workers will remove clothing as necessary and wash or shower with soap and tepid water. Only those areas contaminated need to be washed. Cleaning and drying supplies will be available in the decontamination kit at the emergency worker decontamination stations.

A radiological monitor will re-survey areas after washings to check for contamination. After decontamination, emergency workers will be provided with temporary replacement clothing and allowed to return to their supervisor. After two attempts at decontamination, any individual with contamination levels remaining at 300 cpm or more above background will be referred to a medical facility for further evaluation.

Vehicles and equipment will also be decontaminated at emergency worker monitoring/decontamination stations. Monitors will pay close attention to grills, front bumpers, handles, tires and other areas suspected to be contaminated. Air intake systems and air filters will not be monitored. Any vehicle area or equipment with contamination levels of 300 cpm or more above background will be decontaminated, if possible.

Any vehicles or equipment not immediately necessary for public safety which cannot be decontaminated below the limits will be impounded for further evaluation by OEMA. Those vehicles or equipment required back in service as soon as possible will be decontaminated to the extent possible. Contaminated areas of emergency vehicles that cannot be decontaminated, but are less than 30,000 cpm, will be covered and fixed contamination levels will be conspicuously posted inside the vehicle. The County RO will be informed of any contaminated vehicles returning to service. Vehicles and equipment with contamination levels greater than 30,000 cpm should not be returned to service.

The OEPA will determine a means for the disposal of waste generated by the offsite radioactive decontamination process in coordination with ODH and the utility. Water from the decontamination process may be directed to any existing drain system. Water from decontamination of vehicles and belongings may be directed to any existing drain system.

K.8 Contaminated/Injured Persons

In the event a contaminated/injured person requires medical treatment, emphasis will be placed upon stabilizing and transporting the victim to the designated facility by local fire department or private ambulance.

Attendants trained in the handling of contaminated/injured persons will take precautions to minimize the spread of contamination during treatment and transport of the victim. Attendants will wear gloves and personal dosimetry. A minimum number of personnel essential to the administering of first aid will be used and, in all cases, first aid treatment takes priority over decontamination.

Arrangements have been made with Tri-Point and Lake West Hospitals for the handling and treatment of contaminated/injured persons. Emergency Room personnel are trained to minimize the spread of contamination, monitor and decontaminate and treat injured persons. Advanced treatment for contaminated/injured persons will be coordinated by the County RO and ODH, which maintains a listing of support hospitals capable of providing this service.

K.9 Use of Radioprotective Drugs

Potassium Iodide (KI) is an effective thyroidal blocking agent for reducing accumulation of radioiodines in the thyroid gland that may enter the body through inhalation or ingestion. KI tablets are supplied by ODH to the OEMA RRA for pre-distribution to emergency workers, staff at institutions and for the institutionalized.

The OEMA RRA places KI in each dosimetry packet to allow emergency workers assigned duties inside the EPZ to begin use promptly and voluntarily upon recommendation from ODH. KI will be replaced by the OEMA RRA prior to expiration. Each pack carries a warning concerning the possible side effects and allergic reactions associated with the use of KI. Emergency workers who use dosimetry are also advised of the possible side effects and allergic reactions to KI in training courses, in addition to receiving an information sheet at the time of the emergency.

ODH has also made KI available for pick-up by the general public. There is a supply of KI that will be made available and distributed by the local health district at the care centers, if there is an evacuation. The process is described in Section J.

L. MEDICAL AND PUBLIC HEALTH

L.1 Purpose

To describe the arrangements made to provide medical services for treating contaminated/injured individuals and for evaluating radiation exposure and radioactive material uptakes.

L.2 Treating Injured Individuals Who Are Contaminated

Arrangements have been made with University Hospital's Lake Health, TriPoint Medical Center (primary) and West Medical Center (back-up) to provide medical treatment for injured individuals who are contaminated by radioactive material. Medical Center ER Staff is trained and equipped to handle injured individuals who are contaminated. Special cases beyond the capability of UH Lake Health will be transferred to other hospitals referenced in the State Plan, Hospital List.

The County RO will track all cases of injured/contaminated persons and coordinate the transfer to supporting hospitals with the Fire/EMS Officer.

UH Lake Health's diagnostic evaluation services will provide evaluation of radiation exposure and radioactive material uptake to individuals with an uptake or suspected uptake of radioactive material.

L.3 Transportation of Injured Individuals Who Are Contaminated

Injured persons who are suspected of being contaminated or are contaminated will be transported to the designated facility. The EOC Fire/EMS Officer will coordinate which facility will receive the patient.

EMS squads have been trained and equipped to handle injured individuals who are contaminated. Upon completion of transfer of injured individuals who are contaminated, ambulance crew personnel will report to an emergency worker monitoring/decontamination station where they and the vehicle will be monitored and decontaminated, if necessary.

In the event local resources cannot adequately respond to medical transportation needs, assistance may be requested from the State. If requested, the State will provide ambulances to transport contaminated/injured individuals to the appropriate medical facilities.

L.4 Letters of Agreement

The Letter of Agreement with UH Lake Health is on file at the Lake County EOC and evidences the arrangements outlined in paragraph L.2.

M. RELOCATION, REENTRY, RETURN AND RECOVERY

M.1 Purpose

To describe a general plan of action for post accident operations which provide for a safe and orderly return to pre-emergency conditions.

M.2 Nuclear Incident Phases

EARLY (EMERGENCY) PHASE: the period at the beginning of a nuclear incident when immediate decisions for effective use of protective actions are required and must therefore usually be based primarily on the status of the nuclear facility (or other incident site) and the prognosis for worsening conditions. When available, predictions of radiological conditions in the environment based on the condition of the source or actual environmental measurements may also be used. Protective actions based on the Protective Action Guide (PAG) may be preceded by precautionary actions during this period. This phase may last from hours to days.

INTERMEDIATE PHASE: the period beginning after the source and releases have been brought under control and reliable environmental measurements are available for use as a basis for decisions on additional protective actions. It extends until these additional protective actions are terminated. This phase may overlap the early and late phase and may last from weeks to many months.

LATE (RECOVERY) PHASE: the period beginning when recovery action designed to reduce radiation levels in the environment to acceptable levels for unrestricted use are commenced, and ending when all recovery actions have been completed. This period may extend from months to years.

M.3 Definitions

Protective Action Guides (PAG) - Projected ranges of radiation exposure that specify levels for initiating protective action recommendations such as relocation and limiting the use of contaminated food, water, and animal feed.

Recovery - The process of reducing radiation exposure rates and concentrations in the environment to acceptable levels for unconditional occupancy or use.

Reentry - Temporary entry into a restricted zone under controlled conditions.

Relocation – The removal or continued exclusion of people from contaminated areas to avoid chronic radiation exposure.

Return - Reoccupation of areas cleared for unrestricted residence and use.

Restricted Zone – An area with controlled access from which the population has been relocated. This area is established based upon a specified dose rate and calculated total effective dose determined by Federal and State guidance. The Restricted Zone will include the EPA Relocation PAG Zone and a Buffer Zone surrounding the area to account for migration of deposited material.

FDA Food PAG Zone - An area established based upon a concentration in food present throughout a relevant period of time which, in the absence of intervention may lead to radiation doses equal to Federal and State PAGs for the ingestion pathway.

M.4 Protective Actions

M.4.1 Exposure Pathways

The principal pathways for exposure of the public occupying locations contaminated by deposited radioactivity are expected to be external exposure to gamma radiation from deposited radioactive materials, internal exposure from the inhalation of re-suspended materials, and from ingestion of contaminated food and water.

M.4.2 Protective Actions

The main protective actions for reducing exposure of the public to deposited radioactive materials are relocation, decontamination, time limits on exposure, control of the spread of surface contamination, and protection and control from ingestion of radioactive substances.

The county will rely primarily on the State's Ingestion Zone/Recovery Reentry Advisory Group (IZRRAG) for guidance and recommendations or which areas will be designated Restricted Zone(s) and FDA Food PAG Zone (s). Likewise, it will rely on the State's IZRRAG for description of protective measures to be implemented in these zones.

M.4.3 Restricted Zone

If the radioactive contamination exceeds the level(s) specified by the IZRRAG for return of the population to their residences, a Restricted Zone will be identified by the State. The county, in coordination with other affected counties, will assist the State in establishing access control around the Zone until such time as the restriction is lifted. A buffer zone shall be established around the Restricted Zone at easily identifiable locations, such as intersections. Persons who live in the Restricted Zone and were not previously evacuated will be notified by the outbound telephone notification system, public announcements and house-to-house notifications.

Only authorized persons would be allowed to enter a Restricted Zone. Local access control personnel will utilize "State of Ohio Restricted Zone Passes". If necessary, a Reentry Verification and Orientation Center(s) (REVOC) will be established by the affected counties for coordination of reentry into restricted zones. The REVOC will serve as a verification and information center for personnel requiring reentry. All persons allowed entry will be issued dosimetry and be briefed on its use. In coordination with the State and other involved counties, the DES Director will ensure that access to the Restricted Zone is managed through a designated access control point and that all other access control points do not allow entry or exit. Also, the DES Director will ensure that a monitoring/decontamination station for personnel and equipment is established close to the designated access control point through which entry/exit is controlled. The State or the Department of Energy will approve any environmental samples being removed from the Restricted Zone for laboratory analysis.

Initially, entry into the Restricted Zone will be for monitoring and sampling. Later, authorized persons will need to re-enter for a variety of reasons such as: retrieval of property, security patrol, operation of vital services, and care and feeding of farm and other animals. It may be possible to quickly decontaminate access to vital institutions and special facilities so that they can be occupied by adults for employment or other reasons. People who live inside a Restricted Zone may have to be relocated, temporarily or on a long-term basis.

M.4.4 Ingestion Control Measures

The county will assist the State with ingestion control activities to implement IZRRAG recommendations for control of food and water. The county will relay all such ingestion control recommendations to personnel who are performing tasks for the DES. Also, the county will assist the State with dissemination of information for the public about ingestion control measures and other protective actions.

M.5 Shift from Emergency Phase to Intermediate Phase

Activities conducted during the Emergency Phase and in the Intermediate Phase are not exclusive of one another. Some Intermediate Phase activities may begin prior to the end of the Emergency Phase; however, at some point an official notice of a shift from the Emergency Phase to the Intermediate Phase should be made to inform the entire emergency response organization and the public of the county's operational status.

The incident response effort will shift from the Emergency Phase to the Intermediate Phase upon the decision of the County's EOC Executive Group. Prior to such a decision the EOC Executive Group shall have received:

- (1) Notice from the Perry Nuclear Power Plant (PNPP) that:
 - + the plant is in safe shutdown,
 - + release of radioactive material from the plant has stopped or is within acceptable limits,
 - + additional uncontrolled or potentially harmful releases are unlikely;

- (2) Notice from the State that:
 - + the State Dose Assessment Group or State/Federal Government field monitoring teams have verified that releases have stopped,
 - + the State IZRRAG has environmental measurements and can recommend areas for: (a) unconditional return of the population, (b) return of the population with some temporary protective measures recommended, and (c) Restricted Zone(s);

- (3) Indication from the county EOC staff that Intermediate Phase operations could commence.

Decisions to relax protective action measures that were initiated during the Emergency Phase will be predicated upon information and advice from the State and from the county EOC staff. Advice from PNPP and appropriate elements of the Federal Government may also be solicited. The final decision to relax protective actions will be made by the county's EOC Executive Group who will confer with the Executive Groups of other affected counties and the State's IZRRAG.

M.6 County Operations in the Intermediate Phase

In general, once the Emergency Phase protective actions are relaxed the county's emergency response organization will continue to perform the same or similar functions that originally put the response into effect. The number of personnel needed for most activities will be fewer than the Emergency Phase, so supervisors of field agencies may release emergency responders as appropriate, and with the concurrence of their primary EOC contact person. Among the functions that remain active but are not necessarily staffed to the same level as during the Emergency Phase are the following:

Agency Notification - The EOC will continue appropriate notifications to all response agencies.

Public Notification - The public will be informed of key developments and of return procedures and protective actions for the Intermediate Phase via news releases. (See Part E of this plan)

EOC Operation - The EOC will continue to operate with suitable personnel to meet the needs throughout the Intermediate Phase. The EOC Executive Group will retain the authority to change any existing Protective Action Decisions (PADs) and to implement any new protective actions. The EOC Staff will continue coordinating field operations. As circumstances permit, the DES Director may release some EOC staff and consolidate staff positions. Likewise, field agencies may be asked to reduce numbers of emergency workers on duty, assume new roles, or be released from duty. For longer-term operations, the Executive Group may elect to delegate some protective action decision authority to the DES, the Health District, or others.

Accident Assessment - The EOC Executive Group will continue to coordinate with the State and with the Federal Radiological Monitoring and Assessment Center (FRMAC) on field measurement activities. In particular, the EOC Executive Group will forward to the State any special requests for monitoring/assessment needs that may otherwise be unknown to the State. (See Part I of this plan)

Security Patrols - Security services for the area(s) evacuated will be maintained until normal emergency services are restored. (See Part J of this plan)

Access Control - Access control will be maintained for each area under Protective Action Decisions until such decisions are ended or until other arrangements are accomplished. New access control points may have to be established to facilitate return of the population to areas evacuated or for Restricted Zones. (See Part J of this plan)

Traffic Control - Traffic Control will be resumed at appropriate points as return to the evacuated area(s) is accomplished. (See Part J of this plan)

Transportation - Those evacuees in care centers or other locations in the county that need transportation will be returned to their residences or other quarters. (See Part J of this plan)

Operation of Care Centers - Operation of care centers will be phased out as evacuees return to their residences or are relocated to other quarters. (See Part J of this plan)

Reentry Verification and Orientation Center (REVOC) – A Reentry Verification and Orientation Center (REVOC) will be established for coordination of reentry into restricted zones. This function will continue as necessary for activities such as security, sampling, restoration of vital utilities, milking, watering, feeding, and general care of livestock and poultry until circumstances no longer require it. The location and agency(ies) that operates both the REVOC and the monitoring/decontamination station is decided at the time of the emergency, based on the area restricted.

Radiological Exposure Control - This function will continue for the public and for operations until such time as all areas are returned to pre-emergency conditions. The EOC Staff will inform workers of Protective Action Guides recommended by the State. (See Part K of this plan)

Medical and Public Health Support - Appropriate medical and public health services will extend through the Intermediate Phase. Such service could include psychological counseling or other necessary services. (See Part L of this plan)

M.7 Other Intermediate Phase Operations

Intermediate Phase plans are general by design since effects of radiological events can vary widely and appropriate operations are determined by the circumstances in each case. During the Intermediate Phase there is time to plan and coordinate operations. The following actions may be appropriate for the county to conduct:

- Continue monitoring and decontamination services for people and their property;
- Provide monitoring/decontamination services near the designated access point for a restricted zone;
- Provide assistance with collection of radioactive waste for disposal;
- Provide transportation services to individuals;
- Provide security services for any special operation where advisable;
- Assistance with medical follow-up for residents and emergency workers exposed to radiation;
- Provide services in support of any relocation activity;
- Provide information to local governments and residents about cost estimation and possibilities for financial reimbursements;
- Coordinate with the State Government, Federal Government, colleges and universities and other entities on establishment of a long-term monitoring program.

N. EXERCISES AND DRILLS

N.1 Purpose

To describe the exercises and drills conducted to evaluate emergency response capabilities in Geauga County and to develop and maintain key skills. To establish the process for improving response plans and capabilities based on observations during the tests.

N.2 Exercises

Exercises are realistic, planned simulations of accidents designed and conducted to simulate emergency conditions requiring offsite response to radiological releases. Exercises shall be conducted as set forth in NRC and FEMA regulations.

An exercise that simulates a major emergency at PNPP and requires Geauga County participation will be conducted biennially. The exercise will include the mobilization of State and county personnel and equipment resources to the degree required to verify response capabilities.

The biennial exercise scenario will be varied from exercise to exercise to ensure that all major elements of the Radiological Emergency Response Plan are tested at least once every eight years to include at least one HAB scenario and one non-release scenario.

N.3 Drills

Drills are preplanned simulations in which the participants are "walked" or "talked" through one or more guidelines or aspects of the Plan. The primary purpose of a drill is to train individuals in a controlled situation. A drill is supervised and evaluated by a qualified person, and it provides for on-the-spot correction of inappropriate performance and a demonstration of proper performance by the evaluator. A drill may also be a component of an exercise.

Communication drills will be conducted to ensure that participants understand the types of messages that will be transmitted and how they should respond to these messages.

A communication test of the 5-Way Dedicated Telephone Line connecting Geauga, Lake and Ashtabula counties, PNPP and OEMA will be conducted at least monthly. The communication tests will be initiated by PNPP personnel to verify the reception quality and acknowledgment of the ringdown capabilities of the system. The landline phone with conferencing capability at the Back-Up EOF is tested semi-annually.

A communication test of the Executive Discussion Line (EDL) connecting Geauga, Lake and Ashtabula counties, the State, and PNPP will be conducted quarterly. The communication test will serve to verify the reception quality and acknowledgment of the system.

A communication test of the JIC telephones will be conducted semi-annually. The test will be initiated to verify the reception quality and acknowledgment of the ringdown capabilities of the system.

Communications between Geauga County and response agencies take place on a daily basis. Communication between the Geauga County EOC and State EOC is tested weekly.

The EAS Encoder is tested weekly.

N.4 Exercise/Drill Scenarios

Scenarios for exercises and drills will be developed to simulate actual emergency conditions as closely as possible and to allow free play for decision-making. Scenarios for exercises and drills that involve PNPP will be developed for Geauga County by PNPP. Each scenario for an exercise or drill will contain, as a minimum the following information:

- The basic objective(s) and appropriate evaluation criteria;
- The simulated event(s), which will be of sufficient magnitude as to require offsite response;
- A time schedule of real and simulated initiating events;
- A narrative summary which describes the conduct of the drill or exercise including such things as: simulated casualties, offsite fire department assistance, rescue of personnel, use of protective clothing, deployment of monitoring teams, and public information activities;

- Arrangements for evaluators/observers;
- A description of the advance material to be provided to evaluators/observers and the arrangements for distribution of the materials.

The Geauga County DES Director will make preparations for drills that do not involve PNPP.

N.5 Exercise/Drill Controllers and Observers

a. Exercises.

PNPP may send observers to Geauga County during exercises. Additionally, individuals from regulatory agencies and local, State, or Federal agencies may observe and comment on the exercise.

b. Drills.

PNPP or the Geauga County DES Director will provide qualified drill controllers and observers to supervise and evaluate drill participants.

N.6 Exercise/Drill Critiques

Critiques will be held as soon as is practical following the conclusion of an exercise or drill. FEMA is responsible for conducting a critique within 48 hours after each exercise. In addition, the Geauga County DES Director will conduct a critique immediately after conclusion of an exercise. The agency that conducts each drill will be responsible for conducting the critique of that drill.

The critique participants will evaluate performance and ability of individuals, organizations, and equipment to respond as required.

A written summary of the exercise will be prepared by FEMA evaluators with a copy provided to the Geauga County DES Director. Problems identified by Federal agencies will be addressed to the Executive Director of OEMA through FEMA, Region V, Regional Assistance Committee Chairman. It is the responsibility of the Executive Director of OEMA to ensure a timely response to each correspondence.

Review and implementation of any necessary improvements and/or corrections to the Geauga County Emergency Preparedness Program will be made by the DES Director or under his direction. The County Commissioners will have the final responsibility for ensuring that improvements and/or corrections are completed in a timely manner.

O. RADIOLOGICAL EMERGENCY RESPONSE TRAINING

O.1 Purpose

To describe the training given to individuals in the agencies and organizations in Geauga County who may be requested to respond and provide assistance as the result of an emergency situation at PNPP.

O.2 Overview of the County's Training Program

The Geauga County Department of Emergency Services (DES) has developed a joint training program with the emergency management agencies of Lake and Ashtabula counties. This training program is fully described under separate cover and is officially entitled "Comprehensive Training Program for the Radiological Emergency Response Plans of Ashtabula, Geauga, and Lake Counties", commonly referred to as "CTP". The official CTP document prescribes training for each agency designated in the counties' plans. Along with the associated lesson plans, the CTP document is kept on file in the county EMA/DES offices.

The CTP is designed to assure that each responding agency receives appropriate initial training and is offered annual refresher training for the particular responsibilities assigned to the agency.

The CTP training program is organized into separate subject areas or "modules" of training. Each module has an accompanying lesson plan. The prescribed training for an agency is identified by the training module(s) that contain the subject matter pertinent to that group.

Each emergency worker must take "Basic Emergency Planning Concepts and SOG" (module 1). It contains material common to all responders such as subareas, other agencies' responsibilities plus the material pertinent to the worker's agency emergency response duties.

Training classes and attendance are tracked by computer, which facilitates easy attendance taking and record keeping by the instructors. These records allow for periodic analysis of the annual training objectives in terms of the prescribed training designated for agencies.

O.3 Purpose of the Training Program

Specifically, the purpose of the training program is to:

- Establish a meaningful, effective, and efficient training program for emergency response workers who will respond to emergencies that may occur at the PNPP.
- Ensure that appropriate training is delivered to emergency response workers that will respond to emergencies at the PNPP.
- Specify the training requirement for each radiological emergency response agency.
- Specify the desired number of trained persons for each response agency.
- Provide a means for scheduling and record keeping.
- Provide a method of measuring program attainment.
- Integrate the State's and Federal Government's training programs into the county's program.
- Set qualifications for instructors.
- Coordinate the training programs of Ashtabula, Geauga, and Lake counties' EMA/DES agencies.

O.4 Training Modules and Lesson Plans

The training program consists of separate training modules or subjects, each of which can be presented independently or in conjunction with others. Each module has an accompanying lesson plan. Each lesson plan has a terminal objective and enabling objectives.

Each module can be presented as initial training or as a refresher course. Generally, the refresher training is delivered in about ¼ of the time of the initial training. The training modules are:

1. Emergency Planning Concepts and SOG
2. PIO
3. Radiation Health Effects, Dosimetry and KI for Emergency Workers
4. Radiological Survey Instruments
5. Ambulance Crew handling of Contaminated Injured Victims
6. Access Control Point Procedures
7. School District Administration Emergency Practices
8. School District Transportation Practices
9. Hospital Emergency Department Procedures
10. Public Inquiry
11. PNPP Design and Operation
12. Training for Executive Groups
13. Siren Activation SOP and EAS SOP
14. Radiological Monitoring and Decontamination Procedures
15. Fire Department Interface with PNPP
16. Portable Monitor Operations Manual
17. Professional Planning Series (no formal lesson plan)
18. Evaluated Exercise/Drill Performance

Complete descriptions of the modules are contained in the CTP document that is on file at the counties' EMA/DES offices.

O.5 Who Is Trained To What

Each response agency that has a SOG receives training or familiarization of their responsibilities. CTP lists by training module number the training goal for each agency that is assigned emergency response duties and identifies:

- Each agency with emergency response responsibility;
- The number of persons by agency that should be trained for the agency to function properly;
- The precise training by subject matter for each agency.

O.6 Training Data

Training data is maintained in an Excel spreadsheet for easy reference.

O.7 Just-In-Time Training

There may be emergency workers responding to an incident that are not trained under the CTP. These emergency workers must receive appropriate radiological training prior to performing their duties. This training is provided as “Just-In-Time” training.

Just-In-Time training may utilize informational brochures, videos, and computerized training to provide basic initial radiological training. Specific job tasks will normally be performed under the direction of a CTP trained individual.

P. RESPONSIBILITY FOR THE PLANNING EFFORT

P.1 Purpose

To describe the process for Plan and SOG review/update.

P.2 Planning Responsibility

The DES Director has the overall authority and responsibility for radiological emergency response planning in Geauga County. The DES Director is also responsible for developing, reviewing, and updating the Plan and SOGs and for coordinating them with the plans of other response groups. Coordination of the Geauga County Plan will be made specifically with the Ohio Plan for Response to Radiation Emergencies at Licensed Nuclear Facilities, Federal plans, local plans of Lake and Ashtabula counties and the PNPP Emergency Plan.

The DES Director and his staff will attend emergency planning seminars and workshops conducted by FEMA, OEMA and PNPP periodically. This will ensure that they maintain current levels of training in planning techniques and procedures and in new laws and regulations pertaining to radiological emergency response plans.

P.3 Review and Update

The DES Director will, with assistance from PNPP, review this Plan and its SOGs, Letters of Agreement, maps and other supporting documents at least annually and update as needed.

Any changes dictated by exercise or drill critiques or by revised regulatory requirements or other identified changes are tracked by the DES for incorporation into the plan. Plan changes will be reviewed at an annual meeting with Lake and Geauga counties to maintain consistency across the three county plans.

Updates will be incorporated into the Plan and SOGs. Revised documents will be forwarded to all holders of the Plan or affected SOG(s) and incorporated by the Geauga County DES. Appendix 4 lists the agencies supporting the plan.

If there are no changes to the current RERP, the County Commissioners and the DES Director may issue a letter indicating such to FEMA.

At least once each year, normally following the annual review and update, the County Commissioners and the DES Director will certify the Plan as current. The

certification will be recorded on the Certification form or a letter to FEMA and inserted into the Plan.

The contact information contained in the Notification SOP will be reviewed and updated, as required, by DES personnel at least quarterly.

P.4 Support Plans and Documents

- Support plans are listed below.
- Ohio Plan for Response to Radiation Emergencies at Licensed Nuclear Facilities
- Manual of Protective Actions Guides and Protective Actions for Nuclear Incidents, EPA-400-R-92-001
- Emergency Plan for Perry Nuclear Power Plant
- Lake County Radiological Emergency Response Plan
- Ashtabula County Radiological Emergency Response Plan
- Geauga County Emergency Operations Plan
- Evacuation Time Estimates for Areas Near the Perry Nuclear Plant Plume Exposure Pathway Emergency Planning Zone
- National Response Framework

P.5 References

- SOG Cross Reference with Emergency Plan Section will serve as the listing by title or agency of the Suggested Operating Guidelines (SOGs), cross referenced to the appropriate section of the Plan, the area required to implement the procedures outlined in the Plan.
- NUREG 0654/FEMA-REP 1, Revision 2, "Criteria for Preparation and Evaluation of Radiological Emergency Response Plans and Preparedness in Support of Nuclear Power Plants."
- EPA-400-R-92-001, "Manual of Protective Actions Guides and Protective Actions for Nuclear Incidents"
- FEMA P-1028, Program Manual, Radiological Emergency Preparedness

Appendix 1 Glossary of Terms and Acronyms

Terms

Accident Assessment - Determination of the health hazards produced by radiological emergency at PNPP. Accident assessment involves the field measurement of radiation levels by monitoring teams using portable instruments, the reporting of these readings to a central point, and the interpretation of these readings by trained analysts.

Access Control Point - Points established at roads leading into an evacuated or sheltered area for the purpose of controlling access into an area. Points are operated by state and local police agencies, or the Ohio National Guard.

ALERT - Events are in progress or have occurred which involve an actual or potential substantial degradation of the level of safety of the plant or a security event that involves possible life-threatening risk to site personnel or equipment because of hostile action. Any radioactive releases occurring are expected to be well below the U.S. Environmental Protection Agency (EPA) Protective Action Guideline (PAG) exposure limits.

Alternate Care Center - Care centers that are staffed by the American Red Cross and activated when the primary care center reaches 75% of filled capacity.

Decontamination - Any process such as washing with soap and water which removes radioactive contamination from a surface.

Dedicated Telephone System - A telephone system reserved exclusively for use between certain agencies. Such a system is not available for general usage, thus assuring its availability for its designated purpose.

Direct Reading Dosimeter - An electrostatic device on which radiation exposure can be read.

Drill - A supervised instruction period intended to test, develop, and maintain skills in a particular emergency operation.

Emergency Action Level (EAL) - pre-determined, site-specific, observable triggers for placing the plant in a classification such as an Unusual Event, Alert, Site-Area Emergency, or General Emergency

Emergency Alert System (EAS) - The system for conveying emergency information and instructions to the public by way of public broadcast.

Emergency Operations Center (EOC) – The headquarters from which the emergency response to a radiological emergency at PNPP is controlled and coordinated. The Geauga County EOC is located at 12518 Merritt Road, Claridon Township.

Emergency Operations Facility (EOF) - A headquarters established by the utility and located at or near PNPP which serves as the base of operations for the utility during an emergency at PNPP.

Emergency Planning Zone (EPZ) - An area around PNPP for which plans are required to protect the public in the event of a radiological emergency at PNPP. EPZ's are defined for the plume exposure pathway and the ingestion exposure pathway (see separate definitions).

5-Way Dedicated Telephone - A 5-Way dedicated telephone system which links PNPP (EOF, TSC, and Control Room), the State EOC, the Lake County EOC, the Geauga County EOC and the Ashtabula County EOC.

Executive Discussion Line (EDL) - A telephone system which links the Lake County EOC, the Geauga County EOC, Ashtabula County EOC, and, if requested, the State EOC and PNPP.

Executive Group - The decision-making body of Geauga County. Members are the County Commissioners, DES Director, Sheriff, Executive Assistant, and PIO Liaison.

Exercise - An event that tests the integrated capability and a major portion of the basic elements within emergency organizations.

GENERAL EMERGENCY - Events are in progress or have occurred which involve actual or imminent substantial fuel core degradation or melting with a potential for loss of containment integrity or security events that result in an actual loss of physical control of the facility. Releases may exceed U.S. EPA Protective Action Guideline exposure limits offsite.

HAB – (Hostile Action Based) is an act toward a nuclear power plant or its personnel that includes the use of violent force to destroy equipment, take hostages, and/or intimidate the licensee to achieve an end

Ingestion Exposure Pathway - The pathway in which individuals could receive a radiation dose due to internal deposition of radioactive materials from ingestion of

contaminated water, food, or milk. The planning pathway can extend outward to a distance of approximately 50 miles from PNPP, depending on meteorological conditions and accident severity.

Joint Information Center (JIC) - The location from which news media representatives will obtain briefings and news source materials. The utility is responsible for establishing and operating the JIC at the Auburn Career Center in Concord, OH.

JIC Telephone - Provides a communication link between the EOC and the JIC.

Letter of Agreement - A document executed with, and which assures support by, agencies which have been requested to provide support to Geauga County in the event of a radiological emergency at PNPP.

NUREG-0654-FEMA-REP-1 Rev 2 - The Federal document which establishes the planning criteria upon which the Plan was formulated. The document was prepared jointly by FEMA and the NRC, and its official title is Criteria for the Preparation and Evaluation of Radiological Emergency Response Plans and Preparedness in Support of Nuclear Power Plants.

Permanent Record Dosimeter - A device which provides a permanent record of radiation exposure.

Plume Exposure Pathway - The area around PNPP out to a radius of about 10 miles for which the primary pathway for radiation doses is expected to result from external exposure to or the inhalation of the radioactive material in the air. Also called the 10-Mile EPZ.

Potassium Iodide (KI) - The most commonly used thyroid protecting drug; supplies a large amount of non-radioactive iodine which saturates the thyroid gland and blocks retention of radioactive iodine.

Primary Care Center – A facility outside the 10-mile EPZ at which evacuees are provided food and temporary lodging. The term “Care Center” in this plan is synonymous with the Red Cross term “Mass Care Center”.

Protective Action - An action such as sheltering or evacuation, taken to prevent or minimize exposure to radioactive materials.

Protective Action Guidelines (PAGs) - Criteria for the maximum allowable radiation doses for emergency workers and for the general public. The guidelines presented in the PAGs have been established by the U.S. Environmental Protection Agency and the FDA.

Radioactive Contamination - Radioactive material in an undesirable location.

Receiving School - Predetermined schools outside the plume exposure pathway EPZ to which risk school students are evacuated, at which they remain under risk school officials' supervision, until they are picked up by their parents or legal guardians or moved to a care center.

Reception Center - A facility where monitoring, decontamination, and registration of evacuees are conducted

Risk School District - A school district located partially or wholly within the plume exposure pathway EPZ. This includes all public and private schools.

SITE AREA EMERGENCY - Events are in progress or have occurred which involve actual or likely major failures of plant functions needed for protection of the public or security events that result in intentional damage or malicious acts toward site personnel or equipment needed for the protection of the public. Any releases are not expected to exceed U.S. EPA Protective Action Guideline exposure limits offsite.

Suggested Operating Guideline (SOG) - Documents which support the Plan and which describe specific actions for each emergency response agency in Geauga County.

Standby Status - Term used to describe a state of readiness. SOG's have been reviewed; material, communications, and required supplies are available and adequate for initial operations; and sufficient personnel are on hand to commence operations. Personnel necessary for sustained operations are alerted and ready to report for duty when called.

Traffic Control Point - Points established at critical road intersections for the purpose of controlling the direction and flow of traffic.

Transportation Staging Area (TSA) - A pre-designated site located outside the plume exposure pathway EPZ and operated by fire department personnel through which transportation resources are routed to pre-assigned or current locations to pick up evacuees and transport them to the assigned destination.

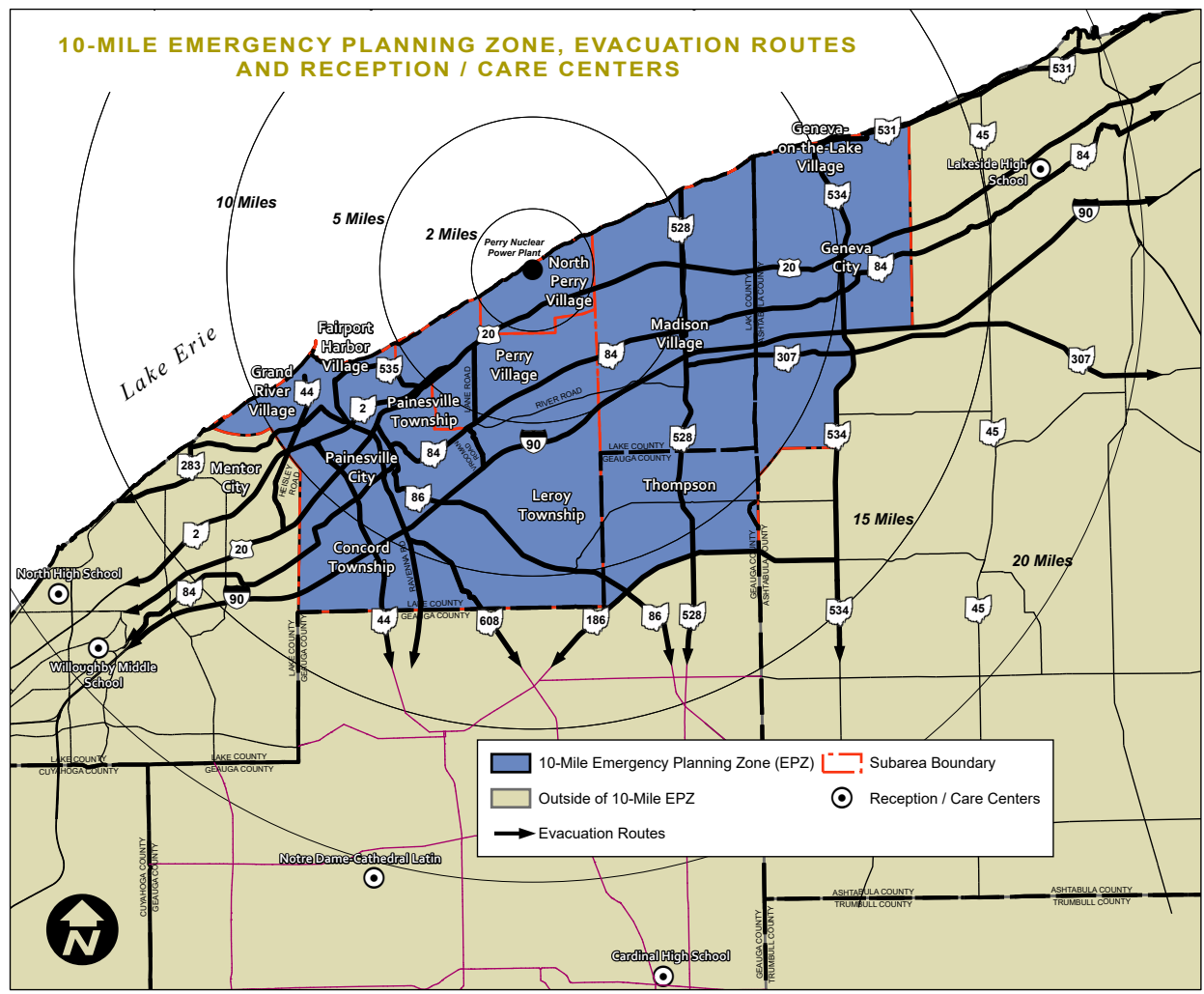
Turn Back Value - An exposure limit at which an Emergency Worker should leave the area without further consultation or direction unless performing lifesaving actions or protecting large populations.

UNUSUAL EVENT - Events out of the ordinary are in progress or have occurred which indicate a potential degradation of the level of safety in the plant or a potential security event. No releases of radioactive material requiring offsite response or monitoring are expected unless further degradation of safety systems occurs.

Acronyms

- ARC - American Red Cross
- cpm – Counts per minute
- DOE - U.S. Department of Energy
- DES – Department of Emergency Services
- EAL – Emergency Action Level
- EAS - Emergency Alert System
- EDL - Executive Discussion Line
- EMA - Emergency Management Agency
- EOC - Emergency Operations Center
- EOF - Emergency Operations Facility
- EPA - U.S. Environmental Protection Agency
- EPZ - Emergency Planning Zone (10 mile)
- ESF – Emergency Support Function
- FENOC – FirstEnergy Nuclear Operating Company
- FEMA - Federal Emergency Management Agency
- HAB – Hostile Action Based incident
- IEP - Ingestion Exposure Pathway (50 mile)
- IZRRAG - Ingestion Zone Recovery Reentry Advisory Group
- JIC - Joint Information Center
- KI - Potassium Iodide
- NRF – National Response Framework
- NRC - U.S. Nuclear Regulatory Commission
- ODA - Ohio Department of Agriculture
- ODH - Ohio Department of Health
- ODOT - Ohio Department of Transportation
- OEMA - Ohio Emergency Management Agency
- OEPA - Ohio Environmental Protection Agency
- ONG - Ohio National Guard
- OSHP - Ohio State Highway Patrol
- OSLD – Optically Stimulated Luminescent Dosimeter
- PAG - Protective Action Guide
- PIO - Public Information Officer
- PNPP - Perry Nuclear Power Plant
- PRD – Permanent Record Dosimeter
- RR/PAO - Reentry, Recovery and Post Accident Operations
- SOG - Suggested Operating Guidelines
- TEDE – Total Effective Dose Equivalent

APPENDIX 2 Emergency Planning Zone (EPZ) Map with Subareas



2 - 1

Table 7-1. Time to Clear the Indicated Area of 90 Percent of the Affected Population

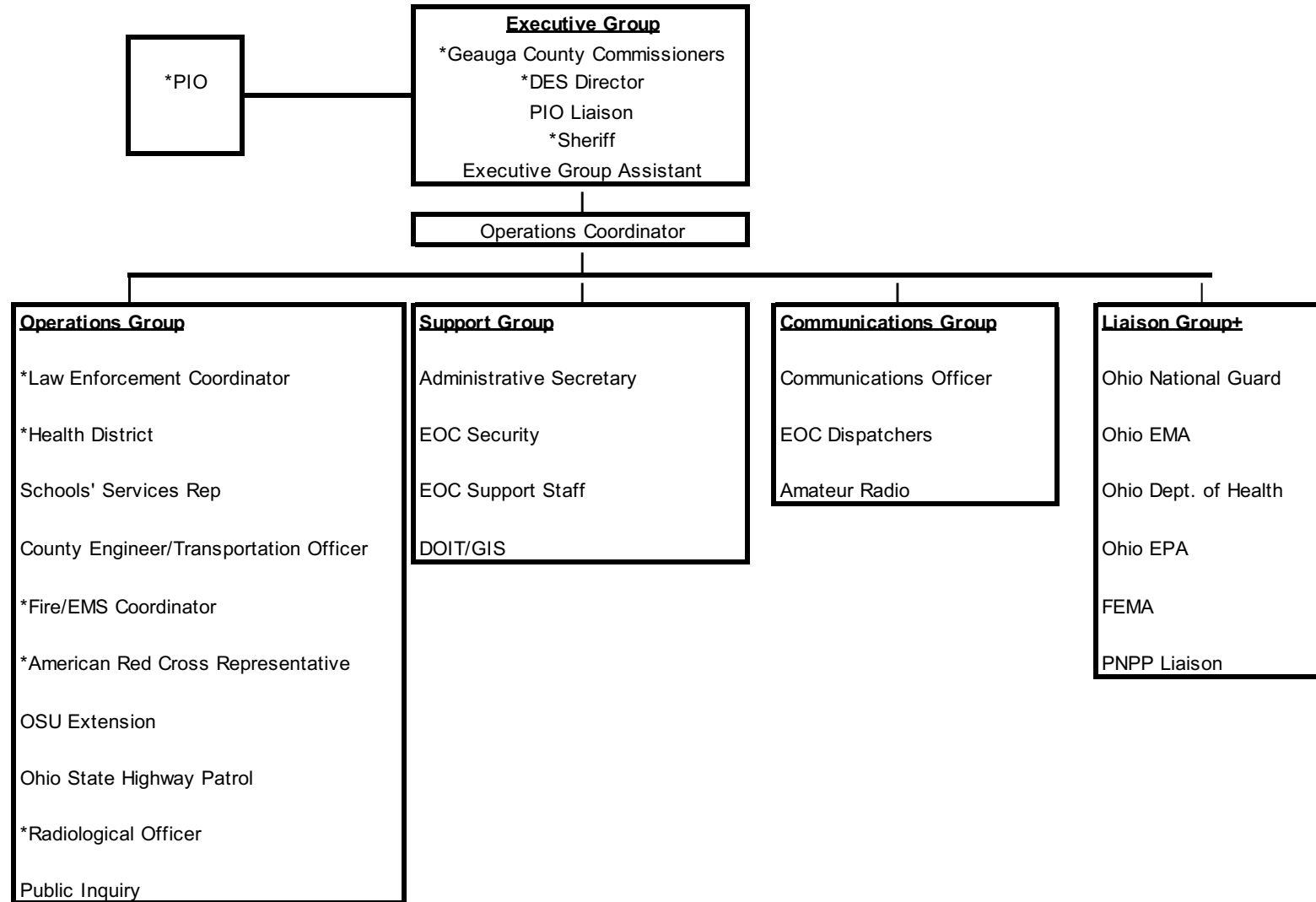
	Summer		Summer		Summer	Winter			Winter			Winter	Summer	Summer
	Midweek		Weekend		Midweek Weekend	Midweek			Weekend			Midweek Weekend	Weekend	Midweek
Scenario:	(1)	(2)	(3)	(4)	(5)	(6)	(7)	(8)	(9)	(10)	(11)	(12)	(13)	(14)
Region	Midday		Midday		Evening	Midday			Midday			Evening	Evening	Midday
	Good Weather	Rain	Good Weather	Rain	Good Weather	Good Weather	Rain	Snow	Good Weather	Rain	Snow	Good Weather	Special Event	Roadway Impact
Entire 2-Mile Region, 5-Mile Region, and EPZ														
R01	2:10	2:10	2:05	2:10	2:05	2:10	2:10	2:20	2:05	2:10	2:15	2:05	2:05	2:10
R02	2:10	2:10	2:05	2:10	2:00	2:10	2:15	2:30	2:05	2:10	2:20	2:00	2:00	2:10
R03	2:55	3:10	3:00	3:10	2:55	2:55	3:05	3:30	2:45	3:05	3:25	2:45	3:05	3:10
2-Mile Ring and Keyhole to 5 Miles														
R04	2:05	2:10	2:05	2:10	2:05	2:10	2:10	2:20	2:05	2:10	2:20	2:00	2:00	2:05
R05	2:05	2:05	2:00	2:05	2:00	2:05	2:05	2:15	2:00	2:05	2:15	2:00	2:00	2:05
2-Mile Ring and Keyhole to EPZ Boundary														
R06	2:30	2:45	2:30	2:45	2:30	2:30	2:45	3:10	2:25	2:40	3:00	2:25	2:40	2:50
R07	2:35	2:50	2:35	2:50	2:30	2:30	2:45	3:10	2:25	2:45	3:05	2:25	2:45	2:50
R08	2:35	2:50	2:35	2:50	2:30	2:30	2:40	3:10	2:25	2:35	3:00	2:25	2:45	2:50
R09	3:00	3:05	3:00	3:05	2:55	3:00	3:00	3:25	2:55	2:55	3:20	3:00	3:00	3:00
R10	2:55	3:00	2:55	3:05	2:55	3:00	3:00	3:25	2:50	2:55	3:20	2:55	2:50	2:55
R11	2:55	3:00	2:50	3:00	2:50	2:50	3:00	3:25	2:45	2:50	3:20	2:50	2:50	2:55
R12	2:45	2:50	2:45	2:50	2:40	2:50	2:55	3:20	2:40	2:45	3:10	2:45	2:45	3:00
R13	2:15	2:20	2:10	2:15	2:05	2:15	2:20	2:40	2:10	2:15	2:30	2:05	2:05	2:25
5-Mile Ring and Keyhole to EPZ Boundary														
R14	2:40	2:55	2:35	2:55	2:35	2:35	2:50	3:15	2:35	2:45	3:05	2:25	2:40	2:55
R15	2:35	2:50	2:40	2:50	2:30	2:35	2:45	3:10	2:30	2:40	3:05	2:25	2:40	2:55
R16	2:35	2:55	2:35	2:50	2:30	2:30	2:45	3:10	2:25	2:40	3:00	2:25	2:40	2:50
R17	2:50	3:00	2:55	3:00	2:55	2:50	3:00	3:25	2:50	2:55	3:15	2:50	2:50	2:55
Staged Evacuation - 2-Mile Ring and Keyhole to 5 Miles														
R18	2:40	2:45	2:40	2:45	2:50	2:40	2:45	3:00	2:40	2:45	3:00	2:50	2:50	2:40
R19	2:55	3:00	2:55	2:55	3:00	2:55	3:00	3:15	2:55	2:55	3:10	2:55	2:55	2:55
R20	2:35	2:40	2:35	2:40	2:45	2:40	2:40	2:55	2:35	2:40	2:55	2:45	2:45	2:35

Table 6-1. Description of Evacuation Regions

Region	Description	Subarea							Lake
		1	2	3	4	5	6	7	
R01	2-Mile Ring	X							X
R02	5-Mile Ring	X	X	X					X
R03	Full EPZ	X	X	X	X	X	X	X	X
Evacuate 2-Mile Radius and Downwind to 5 Miles									
Region	Wind Direction From	1	2	3	4	5	6	7	Lake
R04	SW, WSW, W	X	X						X
	WNW, NW, NNW	Refer to Region R02							
R05	N, NNE, NE, ENE, E	X		X					X
	ESE, SE, SSE, S, SSW	Refer to Region R01							
Evacuate 2-Mile Radius and Downwind to the EPZ Boundary									
R06	N	X		X		X	X	X	X
R07	NNE, NE, ENE	X		X			X	X	X
R08	E	X		X				X	X
	ESE, SE, SSE, S, SSW	Refer to Region R01							
R09	SW, WSW	X	X		X				X
R10	W	X	X		X	X			X
R11	WNW	X	X	X	X	X			X
R12	NW	X	X	X	X	X	X		X
R13	NNW	X	X	X		X	X		X
Evacuate 5-Mile Radius and Downwind to the EPZ Boundary									
R14	N	X	X	X		X	X	X	X
R15	NNE, NE	X	X	X			X	X	X
R16	ENE, E	X	X	X				X	X
	ESE, SE, SSE, S, SSW	Refer to Region R02							
R17	SW, WSW	X	X	X	X				X
	W, WNW	Refer to Region R11							
	NW	Refer to Region R12							
	NNW	Refer to Region R13							
Staged Evacuation - 2-Mile Radius Evacuates, then Evacuate Downwind to 5 Miles									
R18	SW, WSW, W	X	X						X
R19	WNW, NW, NNW	X	X	X					X
R20	N, NNE, NE, ENE, E	X		X					X
Subarea(s) Shelter-in-Place until 90% ETE for R01, then Evacuate		Subarea(s) Shelter-in-Place			Subarea(s) Evacuate				

Information is from the October 2012 ETE study by KLD Engineering

EOC Staff



* Key EOC Staff

+ EOC Representation is at the discretion of the individual agencies listed

Appendix 4
Emergency Response Agencies, Organizations, EOC Response Positions

Geauga County	Person in Charge	Function
Geauga County Commissioners	President, Geauga County Commissioners	Exercises overall decision-making and control in such matters as responses to the emergency and protective actions to be taken by the public. Authorizes activation of sirens and release of public information. Directs reentry and recovery operations; coordinates with the other counties to the extent practical.
Department of Emergency Services	DES Director	Plans for and coordinates implementation of emergency response throughout the county, to include allocated county resources and requesting additional resources from OEMA. Advises the Geauga County Commissioners; manages the EOC and its operations, security, communications, supplies and clerical support. Is responsible for siren activation to alert the public, EAS messages; assumes responsibility for communications and official notification after the EOC is activated. Also serves on EOC Executive Group, assists in direction and control. One of three positions that can activate the Storm Chaser software for creation of the event log and internal messaging.

Appendix 4
Emergency Response Agencies, Organizations, EOC Response Positions

Geauga County	Person in Charge	Function
Sheriff's Office	Sheriff	Responsible for communications and official notification until EOC is activated. Staffs Sheriff's Dispatch Center which is the 24-hour notification point; patrols evacuated areas; directs traffic at traffic and access control points. Coordinates with OSHP and local law enforcement agencies throughout the county. Sheriff also serves on EOC Executive Group, thereby assisting with direction and control. One of three positions that can activate the Storm Chaser software for creation of the event log and internal messaging.
Law Enforcement Coordinator	Sheriff	Implements traffic and access control functions with local police agencies; coordinates the use of Ohio National Guard, at the direction of the Sheriff.
Public Information Officer (PIO)	Geauga County Commissioners	Provides information and instructions to the public before, during and after an emergency. Performs public information functions at the JIC, in coordination with the PIO Liaison at the EOC.
PIO Liaison	Geauga County Commissioners	Assists the PIO by performing public information functions at the EOC; assists the DES Director in preparing the EAS message. Coordinates Public Inquiry operation with EOC Staff, as needed.

Appendix 4
Emergency Response Agencies, Organizations, EOC Response Positions

Geauga County	Person in Charge	Function
Executive Group Assistant	Geauga County Commissioners	Assists with staffing the EOC with County employees and provides administrative support to the Commissioners in the Executive Group room.
Operations Coordinator	DES Director	Coordinates activities of the EOC Operations Group; directs activities of the support staff; ensures the flow of information between the Executive and Operations Groups; is in charge of EOC preparation and adequacy of resources to support EOC operations.
Public Inquiry	PIO Liaison	Provides emergency information to the general public via hotlines.
Assistant Radiological Officer	DES Director	Receives notification calls from PNPP, typically over the 5-Way Telephone regarding the status of emergency.
Radiological Officer	Geauga County Commissioners	Provides radiological information to emergency workers, monitors their exposure and advises them regarding minimizing exposures.

**Appendix 4
Emergency Response Agencies, Organizations, EOC Response Positions**

Geauga County	Person in Charge	Function
Schools' Services Rep	Superintendent	Coordinates the response activities of local school districts and assists with transportation requests.
County Health District	Health Commissioner	Ensures the sanitary standards at the care centers. Coordinates with OSU Extension on the implementation of health advisories. Coordinates direction of resources to health care facilities. Coordinates with ODH and the County RO regarding radiation exposure limits. Responsible for distribution of KI to the institutionalized and the general public at care centers.
County Engineer/Transportation Officer	County Engineer	Provides barricades for traffic and access control points and coordination of Transportation Staging Areas. Maintains evacuation routes.
Fire/EMS Coordinator	Fire Chiefs' Association	Coordinates fire/rescue resources and TSA operations; implements dispatch of ambulance units to TSAs.
Communications Officer	DES Director	Directs county communication support; coordinates assignment of 800 radio fleets and sub-fleets to support emergency response. One of three positions that can activate the Storm Chaser software for creation of the event log and internal messaging.

Appendix 4
Emergency Response Agencies, Organizations, EOC Response Positions

Geauga County	Person in Charge	Function
Job & Family Services (Not an EOC position)	Job & Family Services Director	Provides social services to evacuees as requested by ARC Liaison.
American Red Cross	ARC Director	Responsible for care center operations; registration, food and lodging for evacuees.
EOC Security	DES Director	Implements an identification system to control access to EOC during emergencies.
Geauga Transit (Not an EOC position)	Transit Director	Coordinates Transit resources with the County's Engineer/Transportation Officer at the EOC.
Ohio State University (OSU) Extension	OSU Extension Director	Coordinates the implementation of State protective actions for livestock, food crops and milk supply; assists with farmer reentry into restricted areas and with the implementation of health advisories, if requested.
Message Control	DES Director	Responsible for messages received from outside the EOC and/or via fax or over the 5- Way Dedicated Telephone, in conjunction with the activation of the Storm Chaser software. Ensures those messages are documented, routed, distributed and posted properly.
Administrative Secretary	DES Director	Assists DES Director in EOC facility preparation and in the assignment of support staff.

Appendix 4
Emergency Response Agencies, Organizations, EOC Response Positions

Geauga County	Person in Charge	Function
EOC Support Staff	DES Director	Supports the information flow in the EOC, includes the historian who maintains and displays messages from the Storm Chaser software; GIS personnel and IT support.
Amateur Radio	Club Director	Supports communication flow from the EOC to care centers and other locations, as needed; coordinates with the Communications Officer.
Dog Warden (Not an EOC position)	County Dog Warden	Provides animal control at care centers, as requested by ARC. Assists DES in delivery of supplies to field locations.

Appendix 4

Emergency Response Agencies, Organizations, EOC Response Positions

Local Fire Departments

NOTE: All fire departments retain their normal responsibilities for fire, rescue, and emergency medical services, in addition to their radiological emergency response

Departments inside EPZ

Thompson FD

Montville FD (Not in the EPZ but supports Thompson FD in their activities)

Assist the EOC in notifying persons and facilities with special needs

Perform Back-Up Route Alerting and Verification of Notification

Operate Transportation Staging Area at St. Patrick's Church

Departments outside EPZ

Burton FD

*Chardon FD

Chesterland FD

Hambden FD

*Middlefield FD

*Munson FD

Newbury FD

Troy FD

Provide ambulances for the transport of non-ambulatory persons

Transport contaminated/injured persons to health care facility

*Provide monitoring/decontamination services at primary Reception/Care Centers and at emergency worker monitoring/decontamination station

Appendix 4

Emergency Response Agencies, Organizations, EOC Response Positions

Local Law Enforcement

Law enforcement responsibilities are coordinated among local police departments, the Sheriff's Office and OSHP. Primary responsibility is jurisdictional.

Law Enforcement Agencies inside EPZ

Thompson PD – There are no full time personnel so responsibilities are covered by the Sheriff's Office

School Districts inside EPZ

None

School Districts outside EPZ

Chardon SD

Provides buses/drivers for evacuation of school population and the general public within the EPZ

Provides receiving schools for evacuated school population

Provides an emergency worker monitoring/decontamination station

Cardinal SD

Notre Dame Cathedral Latin

Provides facilities for the monitoring & decontamination of EPZ evacuees by the fire department and primary Care Centers to be operated by the American Red Cross.

Berkshire SD

Kenston SD

West Geauga SD

Provides facilities to be operated by the American Red Cross and used as alternate Care Centers for housing uncontaminated, displaced EPZ evacuees.

Appendix 4
Emergency Response Agencies, Organizations, EOC Response Positions

Nursing Homes outside EPZ

Burton Health Care
Chardon Healthcare
Heather Hill
Ohman Family at Briar Hill
Ohman Family at Blossom Hill
Ohman Family at Holly Hill

Nursing homes provide facilities to house evacuated EPZ nursing home residents.

**Appendix 4
Emergency Response Agencies, Organizations, EOC Response Positions**

State of Ohio	Person In Charge	Function
For a complete listing of State agencies see the State Plan, Section II-A		
State of Ohio Liaison (Optional position)		
Ohio EMA	Executive Director	Has primary responsibility for field radiological measurements (hard gamma radiation and air sampling); assists with accident assessment, protective action recommendations and recovery/reentry actions. Serves as the general coordinating point for Federal, State and local governments.
Ohio State Highway Patrol, Chardon Post #28	Chardon Post Commander	Staffs traffic and access control points; provides law enforcement and EOC representation to both Lake and Geauga counties' EOCs.
Ohio Department of Health	Director, Radiological Health Section	Primary source of direction and control in the areas of accident assessment, recover/reentry guidance and the determination of protective action recommendations for the general public. Provides a KI drug program; makes KI recommendation for the general public, institutionalized and emergency workers.

Appendix 4
Emergency Response Agencies, Organizations, EOC Response Positions

State of Ohio	Person In Charge	Function
Ohio Environmental Protection Agency	Director, Emergency Response Section	Primary responsibility for field sampling; water, vegetation and soil. Provides general assistance with protective action recommendations and recovery/reentry guidance.
Ohio Department of Agriculture	Director	Primary responsibility for protection of livestock, food and crops against radiological contamination.
Ohio Department of Transportation	Director	Responsible for maintenance of state routes; clears traffic impediments and debris.
Ohio National Guard	Adjutant General	Provides logistical support; assists with security patrols, traffic and access control. Provides ambulance support, as needed.
Federal	Person in Charge	Function
For a complete listing of Federal agencies, see the State Plan		
Federal Liaison (Optional position)		
FEMA	FEMA Region V Director	Coordinates offsite Federal response; responds to requests from State and county for support; ensures adequate Federal support for recovery operations.

Appendix 4
Emergency Response Agencies, Organizations, EOC Response Positions

Federal	Person in Charge	Function
NRC		Assesses nature and extent of accident onsite and the potential offsite consequences. Provides technical advice and recommendations to State and County authorities for protective measures.
Utility	Person in Charge	Function
PNPP Liaison	Emergency Response Manager	Coordinates utility activities with DES Director; provides EOC support for all functions.
Other	Person in Charge	Function
UH Lake Health	Administrator	Medical Centers provide medical treatment for radiologically contaminated, injured persons.

Appendix 5
Agency Responsibility Matrix

Revision 28
January 2022

	Direction & Control	Notification	Communications	Public Alerting	Public Information	Emergency Facilities	Accident Assessment	Medical	Radiation Exposure Control	Protective Action	Decontamination	Reentry/Recovery	Transportation	Care Centers	Logistical Support	Law Enforcement/Security	Access Control	Fire/EMS	Radiation Monitoring	Social Services	Training	Exercise/Drills	Message Control	Plan Maintenance	Health	Animal Control	Public Inquiry
COUNTY																											
COMMISSIONERS	P			S	S					P		P															
DES	S	*	*	P	S	P				S		S			P						P	P		S			
SHERIFF	S	*	*							S		S				P	P										
EXECUTIVE GROUP ASSISTANT					S							S			S												P
PIO LIAISON	S			S	S					S					S												P
PUBLIC INFORMATION OFFICER					P										S												S
OPERATIONS COORDINATOR	S		S			S									S							S	S				
ENGINEER/TRANSPORTATION OFFICER									S				P		S		S										
RADIOLOGICAL OFFICER							S		P	S	S	S							S								
FIRE/EMS COORDINATOR				S								S		S				P									
HEALTH DISTRICT								S				S		S												P	
OSU EXTENSION									S			S														S	
JOB & FAMILY SERVICES																				P							
GEAUGA TRANSIT									S	S		S									P						
SCHOOLS' SERVICES REP									S	S		S		S													
COMMUNICATIONS OFFICER		P	P																								
EOC SECURITY																S											
DOG WARDEN														S	S											P	
THOMPSON FIRE DEPT.				S					S	S		S	S					P									
BERKSHIRE SCHOOL DISTRICT													S		S												
OTHER FIRE DEPARTMENTS									S	S	P			S				S	P								
OTHER POLICE DEPARTMENTS									S	S				S		S											
OTHER SCHOOL DISTRICTS													S	S													
EOC STAFF SUPPORT					S										S								P				S
STATE																											
OHIO EMA						S	*		S			S			S				P		S	S			S		
OHIO STATE HIGHWAY PATROL								S								P	P										
OHIO NATIONAL GUARD								S	S						S	S	S										
OHIO DEPARTMENT OF HEALTH							*		P	P		P													S		
OHIO EPA									S			S										P			S		
FEDERAL																											
FEMA										S											S	S					
NRC							P																				
DOE							S																				
UTILITY																											
PNPP		P					S		S												S	S		S			
OTHER																											
AMERICAN RED CROSS														P													
AMBULANCE								S	S		S						S										
AMATEUR RADIO		S	S											S	S												
HOSPITALS								P																			
LEGEND	P:	PRIMARY						S:	SUPPORT				*	SHARED													

Appendix 6 Letters of Agreement

Title/Agency

Perry Nuclear Power Plant (First Energy/Energy Harbor)
American Red Cross
St. Mary's School (Perry SD buses staging area)
Berkshire School District
Cardinal School District
Chardon School District
Kenston School District
Notre Dame Cathedral Latin
West Geauga School District
| Ohman Family at Blossom Hill Nursing Home
| Ohman Family at Briar Hill Nursing Home
Burton Health Care
Chardon Healthcare
Heather Hill, Inc.
| Ohman Family at Holly Hill Nursing Home
St. Patrick's Church (Transportation Staging Area)
UH Lake Health
State of Ohio – School Bus Use

Letters of Agreement are on file at the Geauga County Department of Emergency Services office; they are reviewed annually and updated as needed.

APPENDIX 7

EMERGENCY ACTION LEVEL SCHEME

NOTES

1. The order in which actions are listed is not necessarily the sequence in which they would occur.
2. Discretionary actions will be taken by the County Commissioners. The Commissioners will make their decisions in consultation with other members of the EOC Executive Group, based on recommendations made by PNPP, the OEMA and the Geauga County EOC Operations Group.

Emergency Classification

Initial Actions

UNUSUAL EVENT

- o Notify key response personnel.
- o Prepare news release.

ALERT

- o Notify key response personnel.
- o Partially activate EOC.
- o Establish EOC security.
- o Notify agencies and organization inside the 10-Mile EPZ including school districts, fire and police departments and nursing homes.
- o Notify schools inside and outside the 10-Mile EPZ.
- o Establish EOC message control.
- o Prepare news releases.
- o Radiological Officer assumes responsibility for operation of the 5-Way Dedicated Telephone.

Emergency Classification

Initial Actions

SITE AREA EMERGENCY

- o Establish communications with Ashtabula and Lake counties.
- o Continually update status boards.
- o If the JIC is activated, the PIO proceeds to the JIC.
- o Notify all EOC Staff.
- o Activate and staff EOC.
- o Establish EOC security.
- o Consideration given to declaring a “State of Emergency” in Geauga County.
- o Notify all agencies and organizations such as fire and police departments, schools, ambulances, health care facilities, county offices.
- o Notify sight/mobility impaired, hearing impaired, large employers and camping/recreation areas inside the 10-Mile EPZ.
- o Establish EOC message control.
- o Radiological Officer assumes responsibility for operation of the 5-Way Dedicated Telephone.
- o Communications established with Ashtabula and Lake counties; maintain a continuous link.
- o During HAB incidents, Law Enforcement will provide credential verifications.

Emergency Classification

Initial Actions

- o Staff primary care centers.
- o Activate Transportation Staging Area. Buses arrive at staging area.
- o When the JIC is activated, PIO proceeds to the JIC.
- o Risk (EPZ) schools relocate, if schools' officials deem it prudent.
- o Staff emergency worker monitoring/decontamination station and activate, if requested.
- o Receiving schools receive students from risk schools, if risk schools are relocated.
- o Activate traffic control points, if local conditions warrant.
- o Establish public inquiry.
- o Determine bus and ambulance needs.
- o Remove impediments from evacuation routes.
- o Ensure emergency workers are issued dosimetry packets.
- o Continually update status information
- o During HAB incidents, Law Enforcement will provide credential verifications.

Emergency Classification

Initial Actions

GENERAL EMERGENCY

- o Complete actions under **SITE AREA EMERGENCY**.
- o Ambulances arrive at Transportation Staging Area.
- o Alert and warn public via siren activation and EAS announcements and conduct back-up route alerting, if necessary.
- o Activate monitoring/decontamination teams and station for emergency workers and at primary care centers.
- o Recommend placing lactating livestock and poultry within 10-Miles of PNPP on stored feed and assess need to extend distance.
- o Risk schools evacuated to receiving schools, if not previously relocated.
- o Activate traffic control points.
- o Activate access control points, if necessary.
- o Implement recommended protective actions.
- o Monitor emergency worker exposures.

Protective Action

Initial Actions

SHELTERING

- o Complete actions under **GENERAL EMERGENCY**
- o Shelter risk school students and public in affected areas, if risk schools not previously relocated.
- o Notify agencies and organizations of radioactive release(s).
- o Establish access control points for areas being sheltered.

EVACUATION

- o Complete actions under **GENERAL EMERGENCY.**
- o Evacuate risk school students if not previously relocated, and the general public.
- o Notify agencies and organizations of radioactive release(s).
- o Establish access control points for areas being evacuated.
- o Provide non-auto owning population transportation out of EPZ.
- o Provide public with monitoring/decontamination and care at primary care centers.
- o Provide emergency workers with monitoring/decontamination at emergency worker monitoring/decontamination stations.
- o Provide security for evacuated areas.
- o Begin the Intermediate Phase, to address Re-entry, Recovery and Relocation.

**Appendix 8
Notification Forms**

**Initial Notification Form
Follow-up Notification Form
State of Ohio Protective Action Recommendations
County Protective Action Decision
State Supplemental Action Forms**

**Current Forms are located at the
Geauga County Department of Emergency Services**

**Appendix 9
Siren Locations**

**The Siren Locations Map is on file at the
Geauga County
Department of Emergency Services**

Appendix 10
Emergency Preparedness Information (EPI) Brochure

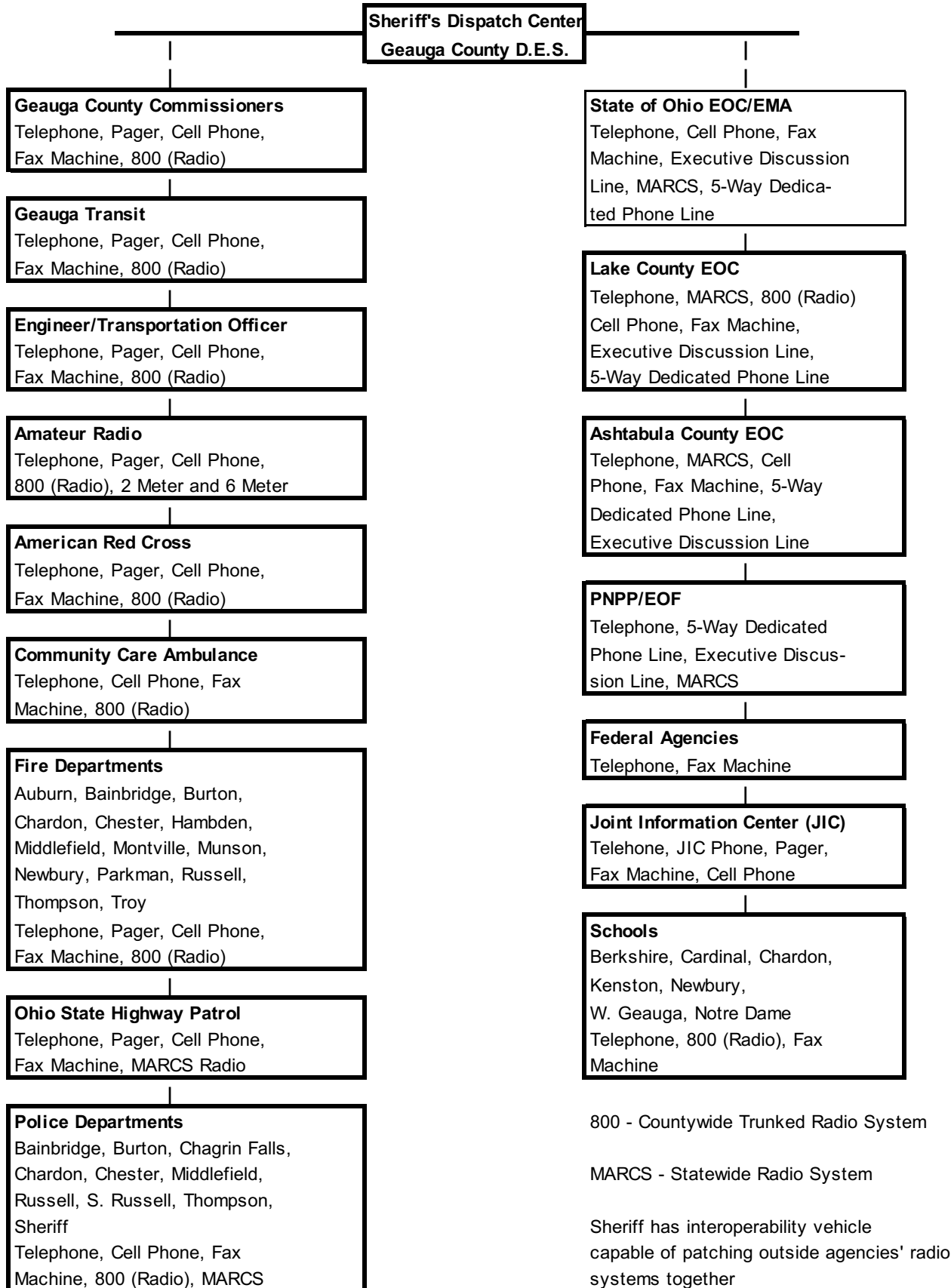
**Copies of the EPI Brochure are available at the
Geauga County
Department of Emergency Services.**

**Appendix 11
EAS Messages**

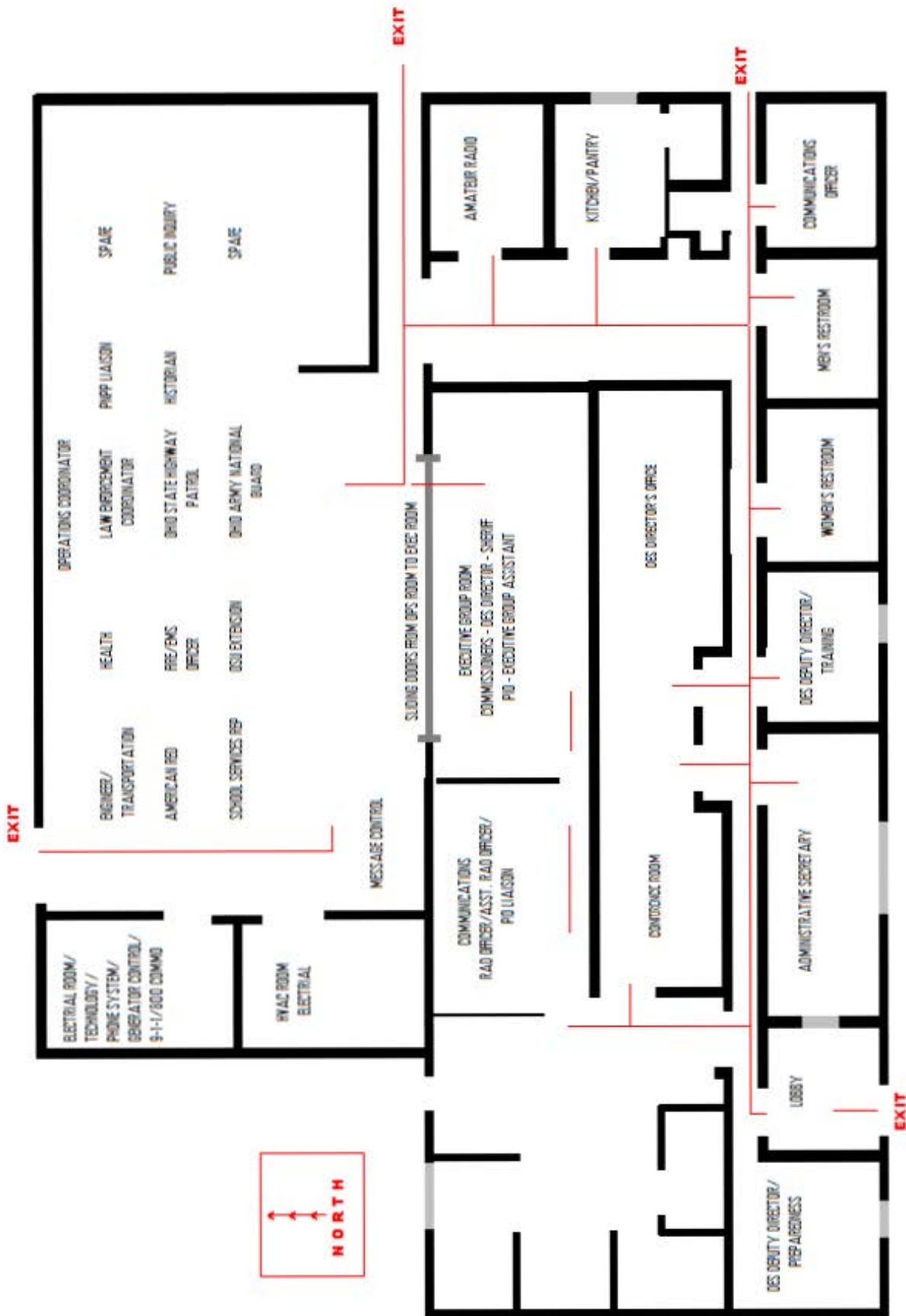
**The EAS procedure is on file at the
Geauga County Department of Emergency Services**

**Appendix 12
Communications Links**

Revision 28
January 2022



Appendix 13



Appendix 14 Emergency Kits

General contents of emergency kits are shown below. The exact inventories and types of equipment vary with each response organization. For example, one fire department might have 20 dosimeters whereas another might have 34; also, one fire department might have protective clothing, whereas another may not.

Personnel Decontamination Kit

- o Personnel decontamination supplies
- o Protective clothing
- o Radiological monitoring equipment
- o Respiratory protective equipment (SCBAs provided by Fire Department, as needed)
- o Record forms

Red Cross Mass Care Kit

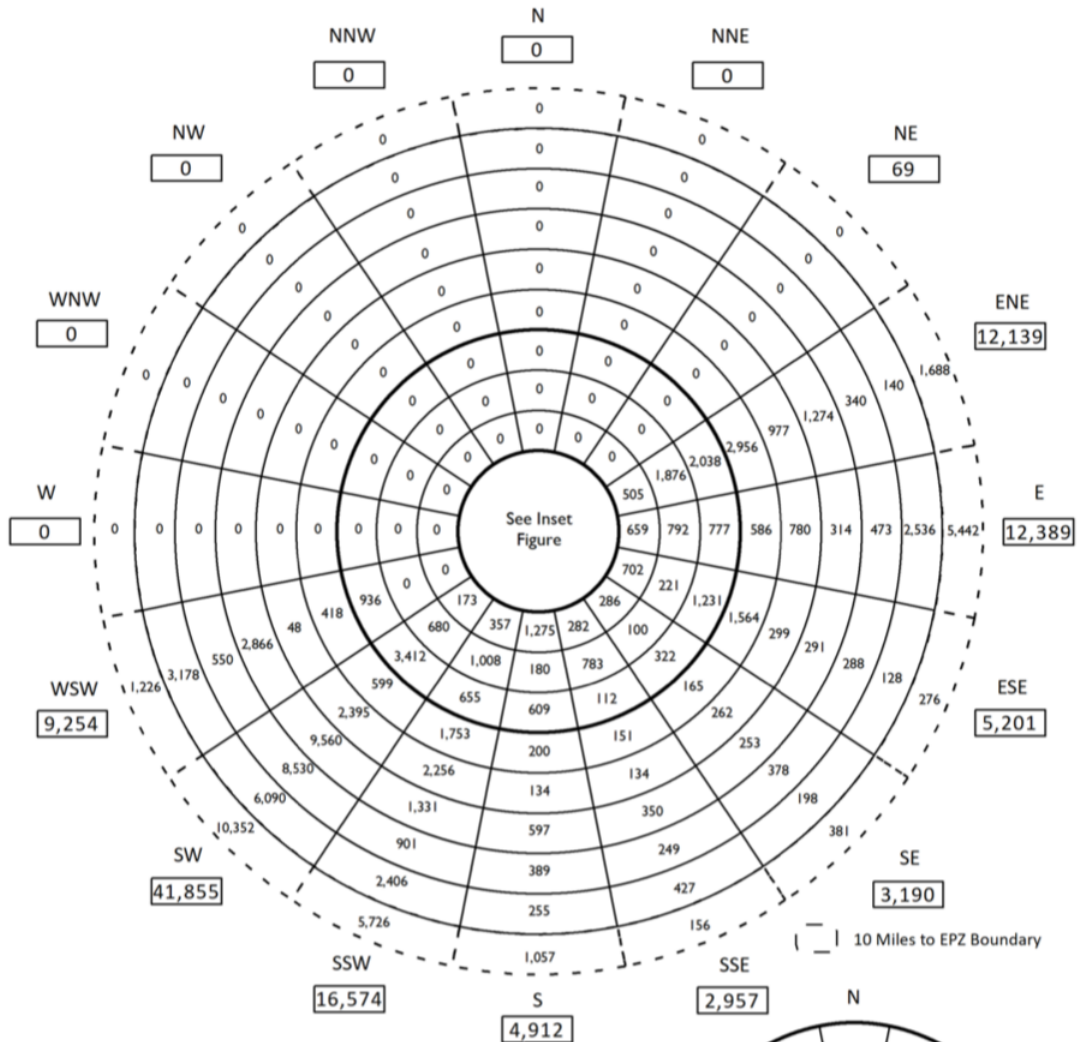
- o Registration forms
- o (Other items to be added by Red Cross)

Personnel Radiological Protection Kit

- Dosimetry Packet
- CDV-730
- CDV-742
- PRD
- Dosimetry Report Form
- Potassium Iodide (KI) tablets (7)

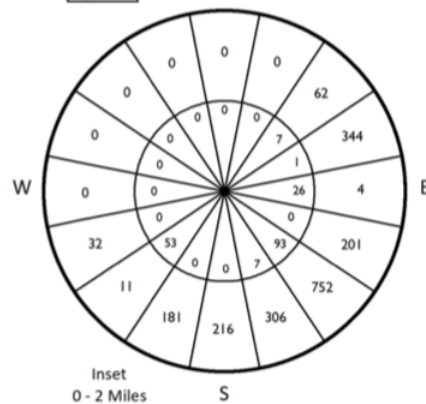
Appendix 15

Perry Nuclear Power Plant Sector and Zone Designators



2019 Extrapolated Resident Population

Miles	Subtotal by Ring	Cumulative Total
0 - 1	187	187
1 - 2	2,109	2,296
2 - 3	4,239	6,535
3 - 4	5,640	12,175
4 - 5	10,092	22,267
5 - 6	8,392	30,659
6 - 7	7,285	37,944
7 - 8	16,836	54,780
8 - 9	12,098	66,878
9 - 10	15,358	82,236
10 - EPZ	26,304	108,540
Total:		108,540



**Appendix 16
County Traffic Control Points**

**Geauga County Traffic Control Points
are listed at the Geauga County Emergency Operations Center**

Appendix 17

Access Control Points

The Access Control Points in Geauga County are all located in Thompson Township and shown on the map at the EOC. They will be manned by the Geauga County Sheriff's Office (GCSO) and Ohio State Highway Patrol (OSHP). All access control point operations will be coordinated between the three counties' EOC's using the tri-county EPZ Access Control Point Map.

Appendix 18
Care Centers in Geauga County
Emergency Worker Monitoring & Decontamination Station

<u>Primary Care Centers in Geauga County</u>	<u>+Care Center Capacity</u>
1. Cardinal High School, Middlefield	726
2. Notre Dame Cathedral Latin, Munson Township	1,108
 <u>Alternate Care Centers in Geauga County</u>	
3. West Geauga Sr. High School, Chesterland	1,100
4. Berkshire High School, Burton	608
5. Newbury High School, Newbury	784
6. Kenston Middle School, Bainbridge	<u>963</u>
	Total 5,289

Care center capacity was determined by survey taken by Geauga County Chapter of the American Red Cross using Mass Care Facility Survey Procedures.

Alternate Care Centers are for housing only and are opened only after Primary Care Centers reach 75% capacity.

Additional school facilities are also available for care center services: West Geauga Middle School, Cardinal Middle School, Kenston High School.

Emergency Worker Monitoring & Decontamination Station

Chardon High School
151 Chardon Avenue
Chardon, OH

Monitoring/Decontamination Teams at the primary care centers and the emergency worker facilities are comprised of the following members:

1. Team Leader
2. Dosimetry Coordinator
3. Personnel Portal Monitor Operator
4. Personnel Recorder
5. Locker Room Monitor (2 – Male & Female)
6. Locker Room Recorder (2 – Male & Female)
7. Locker Room Attendant (2 – Male & Female)
8. Transportation Attendant
9. Vehicle/Equipment Monitor
10. Vehicle/Equipment Recorder
11. Vehicle/Equipment Attendant
12. Vehicle Movement Attendant

In order for the emergency worker facility to be declared “operational”, at least 11 persons must be onsite to fill positions 1 – 8.

The primary care center facilities are declared “operational” when both the ARC Shelter Team (# of personnel based on ARC requirements) and the M/D team are present.

**Appendix 19
Geauga County Receiving Schools
and
Transportation Staging Area**

	<u>School at Risk</u>	<u>Receiving Schools</u>
1. <u>*Receiving Schools</u>	Perry High School	Chardon High, Chardon
	Perry Middle School	Chardon Middle, Chardon
	Perry Elementary	Chardon High, Chardon
	New Life Christian Academy	Chardon High, Chardon

2. Transportation
Staging Area

St. Patrick's Church
16550 Rock Creek Road
Thompson

*Receiving schools will temporarily house relocated school children who are awaiting parental or guardian pick-up. Any Perry School District school children not picked up within an appropriate amount of time will be transported to the primary care center at Notre Dame Cathedral Latin, where he/she will be processed as an evacuee and cared for by the American Red Cross.

**Appendix 20
Risk/Host Health Care Facilities**

The Risk and Host health care facilities are listed in SOG Attachment 7, Host Facility Notification List.

Suggested Operating Guidelines (SOGs) have been developed for all Risk and Host Health Care facilities in the tri-county area. The Geauga County Health District Commissioner will coordinate resource needs with facility administrators.

APPENDIX 21

**EMERGENCY WORKER
PROTECTIVE ACTION GUIDES**

Early-Phase Dose and Dosimeter Limits

Activity	TEDE Dose Limit	Dosimeter Limit / Turn- back Value
Inside Emergency Planning Zone:		
Standard Response Functions	5 rem	1 R
Protecting valuable property	10 rem	2 R
Lifesaving or protection of large populations	25 rem	5 R
Outside Emergency Planning Zone:		
All	5 rem	5 R
Intermediate-Phase Dose and Dosimeter Limits		
Inside Restricted Zone:		
All	5 rem	5 R
Outside Restricted Zone:		
All	5 rem	5 R

Emergency Workers are limited to non-pregnant adults performing emergency services.

CONTAMINATION ACTION LEVELS

(Personnel, Clothing, Belongings)

IF portal monitor **DOES NOT** alarm:

THEN individual exits paper and proceeds to Recorder

IF portal monitor **ALARMS**:

THEN individual remains on paper and proceeds to locker room

- Individual is monitored with a survey instrument
- Probe is held 1-3 inches above surface
- Probe is moved less than 6 inches per second

IF greater than 300 cpm above background is found;

THEN decontaminate

IF greater than 300 cpm above background remains after 1st decontamination;

THEN decontaminate a 2nd time

IF still greater than 300 cpm above background;

THEN refer to hospital

IF initial reading on face or chest is greater than 3000 cpm above background;

THEN refer to hospital (even if less than 300 cpm after 2 attempts)

Note: Maximum background for contamination monitoring is 300 cpm.

CONTAMINATION ACTION LEVELS

(Personal and Emergency Vehicles)

If the occupants of a public vehicle are monitored and found to be “not contaminated”, their vehicle does not require monitoring.

Monitor the following areas of vehicles:

- grills
- front bumpers
- wheel wells
- tires
- handles
- passenger compartments
- (do not monitor air intake systems and air filters)

IF greater than 300 cpm above background is found ON ANY VEHICLE;

THEN mark vehicle and move to impound area for decontamination when convenient.

IF greater than 300 cpm above background remains ON A PUBLIC VEHICLE after decontamination attempts:

THEN impound vehicle, tag it and maintain an inventory list of the contaminated vehicles.

IF greater than 300 cpm but less than 30,000 cpm above background remains ON AN EMERGENCY VEHICLE THAT IS NEEDED FOR SERVICE after decontamination attempts:

THEN cover contaminated area with plastic, mark it and release for service.

IF greater than 30,000 cpm above background remains ON AN EMERGENCY VEHICLE THAT IS NEEDED FOR SERVICE after decontamination attempts:

THEN impound vehicle, tag it and maintain an inventory list of the contaminated vehicles.

Appendix 22
Documents Cross Reference with Emergency Plan Section

<u>SOGs</u>	<u>Section of Plan Supported</u>
American Red Cross	A.4, B.2, J.5.4, J.5.5,
Chardon School District	A.4, B.2, E.4.4, F.6, G.2, J.5.3, J.6, K.6
Commissioners	A.4, A.6, B.3, B.5, D, E.4, G.3, I, J, M
Communications Officer	A.4, B.2, B.3, E.3, F.4
DES Agency	A.4, B.3, B.4, B.5, C.2, C.3, D, E.4, F.3, H.2.2, I, J, M, P.10
Director	A.4, B.3, B.5, C.2, C.3, D, E.4, F.3, H.2.2, I, J, M, N, O, P
Engineer	A.4, B.2, B.3, E.3, E.4.3, J.5.1, M.6
EOC Support Staff	A.4, B.2, B.4, C.4, E.3, F.4, F.7, H.2, H.3
Fire Department – Care Center	A.4, B.2, E.3, J.5.1, J.5.4, J.5.5, K, L.2, L.3
Fire Department – EWMDS	A.4, B.2, E.3, J.5.1, J.5.5, J.6, K, L.2, L.3
Fire EMS Officer	A.4, B.2, B.3, E.3, E.4.1, E.4.3, E.4.5, J.4, J.5.1
GARA	A.4, B.2, B.3, E.3, F.2, H.2.2, J.5.4
Geauga Nursing Homes	A.4, B.2, B.3, E.3, J.5.1
Health District	A.4, B.2, E.3, J.5.4, J.5.5, J.9, L
Message Control	A.4, B.2, B.4, E.3, F.4
Message Control with Storm Chaser	A.4, B.2, B.4, E.3, F.4
Ohio State Highway Patrol	A.4, B.2, B.3, E.3, J.5.2, J.5.4, J.7, M.4.3, M.6
Operations Coordinator	A.4, B.3, B.4, C.2, C.3, F.3, H.2, H.3, J, M
OSU Extension	A.4, B.2, B.3, E.3, I.2, J.2
Public Information Officer	A.4, B.2, B.3, E.3, E.4, F.2, G.3, G.4, G.5
PNPP Liaison	A.4, B.3, C.2, C.3, H.2.3, I, J, M, N, O, P
Radiological Officer	A.4, B.2, B.3, E.2, E.3, J.2, J.3, J.5, K, L.2, M.6
School Services Representative	A.4, B.2, B.3, E.3, E.4.3, J.4, J.5.6

Schools – Care Centers	A.4, B.2, B.3, E.3, E.4.4, F.2.3, J.5.3, J.5.4, J.5.5, K
Sheriff's Office	A.4, B.2, B.3, B.4, E.2, E.3, F.3, F.5, H.2.4, J.4, J.5.2, J.5.3, J.5.4, J.7, M.4, M.6
Thompson – Montville Fire Depts	A.4, B.2, B.3, E.3, E.4.2, E.4.3, E.4.5, J.4, J.5.1, L.2, L.3
Thompson Police Department	A.4, B.2, B.3, E.3, J.4, J.5.4, M.4.3, M.6
Geauga Transit Program	A.4, B.2, B.3, E.3, E.4.3, J.5.1, M.6

<u>OTHER DOCUMENTS</u>	<u>Section of Plan Supported</u>
Comprehensive Training Program (CTP)	A.4, B.2, H.3.2, K.2, K.9, O, P.2
Evacuation Time Estimate Analysis (ETE)	A.4, E.4.4, G.2, J.2, J.4, J.5
Emergency Preparedness Information Brochure (EPI)	E.4.2, E.4.4, G.2, J.2, J.5.1,
Siren Activation SOP	A.4, E.4.1, H.2.2, J.4, J.5
Emergency Alert System (EAS) SOP	A.4, E.4.1, E.4.2, E.4.4, J.2, J.4, J.5
Call Out Procedure	A.3.1, B.4, E.2, E.3, F.2, F.3, F.5
Geauga Emergency Operations Plan (EOP)	C.2, C.3

Appendix 23

Revision 28
January 2022

Planning Standard	Locations
A	
A.1.i	B.2, Appendix 4
A.1.ii	B.2, Appendix 4, 5
A.1.a	
i.	A.3,B.2, B.3, Appendix 4,5
A.1.b	
i.	Appendix 3
A.1.c	
i.	B.3, Appendix 4
ii	B.3, B.5, Appendix 4.
A.2	
i.	B.5
ii.	B.3, Commissioners SOG (Part 2, Site Area Emergency)
iii.	B.3, Commissioners SOG (Part 2, Site Area Emergency)
A.3	
i.	B.3, Appendix 3
ii.	B.2, Appendix 4, 5
iii.	B.2, Appendix 5
A.4	
i.	Appendix 6
ii.	Appendix 6
iii.	Appendix 6
iv.	C.3, Appendix 6
v.	Appendix 6
A.5	
i.	B.3, B.4
ii.	B.4
iii.	B.4
iv.	B4
B	
C	
C.1	
i.	C.4
ii.	C.4
iii.	C.4
C.2.a	
i.	Geauga Emergency Operation Plan (EOP), III D, IV A
C.2.b	
i.	Geauga Emergency Operation Plan (EOP), III D
ii.	Appendix 6, Geauga EOP IV B
iii.	Geauga Emergency Operation Plan (EOP), III D, IV A
iv.	Geauga Emergency Operation Plan (EOP), III D, IV A
v.	B.2, Appendix 4, 5

Appendix 23

Revision 28
January 2022

Planning Standard	Locations
vi.	C.3
vii.	Geauga Emergency Operation Plan (EOP), Annex A 5
C.2.c	
i.	N/A - Host County Only
ii.	N/A - Host County Only
iii.	N/A - Host County Only
C.2.d	
i.	Appendix 6
C.3	
i.	B.2, Appendix 5
ii.	B.2,B.3, Appendix 3,4,5
iii.	B.2,B.3, Appendix 3,4,5
iv.	B.2,B.3, Appendix 3,4,5
C.4	
i.	N/A - State Responsibility
ii.	N/A - State Responsibility
iii.	N/A - State Responsibility
iv.	N/A - State Responsibility
D	
D.1.b	
i.	D.2, Appendix 1
ii.	D.2, Appendix 1, 7
iii.	D.3, Appendix 1
D.4	D.3, Appendix 7
i.	D.3, J.3, Appendix 7
E	
E.1	
i.	E.2,E.3
ii.	E.2, E.3
iii.	E.2, Call Out Procedure (Part 2)
iv.	E.2, Notification SOG (B.6)
E.1.a	
i.	E.3, Appendix 12, Call Out Procedure (Part 2)
ii.	E.3, Appendix 12, Call Out Procedure (Part 2)
iii.	E.3, Appendix 12, Call Out Procedure (Part 2)
iv.	E.3, Appendix 12, Call Out Procedure (Part 2)
E.2	
i.	N/A - Licensee Responsibility
ii.	E.4.1, Thompson FD SOG (Part 2)
iii.	
iii (a).	E.4.1, Siren SOP (Part 1 & 2)
iii (b).	E.4.1, Siren SOP (Part 1 & 2)

Appendix 23

Revision 28
January 2022

Planning Standard	Locations
iv.	E.4.2, EPI
v.	N/A - State Responsibility
vi.	N/A - State Responsibility
vii.	N/A - State Responsibility
viii.	E.4.4, Appendix 12, EAS SOP (Section I)
ix.	E.4.2, EAS SOP (Section I)
E.3	
i.	Appendix 8
ii.	Appendix 8
E.4	
i.	Appendix 11, EAS SOP (Pages 3 through 91)
ii.	E.4.4, Appendix 11, EAS SOP (Section I, II, III)
iii.	E.4.2, EAS SOP (Section II, III)
iv.	E.4.4, Appendix 11, EAS SOP (Section II, III)
v.	Not Required
E.5	
i.	E.4.4, Appendix 11, EAS SOP (Section I, II, III)
ii.	E.4.4, Appendix 11, EAS SOP (Section I, II, III)
iii.	E.4.4, Appendix 11, EAS SOP (Section I, II, III)
F	
F.1.a	
i.	F.2, F.3, Appendix 12
ii.	F.2, F.3, Appendix 12
F.1.b	
i.	F.5, Appendix 12
ii.	Appendix 12, Call Out Procedure (Part 2)
F.1.c	
i.	F.5, Call Out Procedure (Part 2)
ii.	F.5, Call Out Procedure (Part 2)
F.2	
i.	F.6, Appendix 12
F.3	
i.	F.7, N.3
G	
G.1	
i.	G.2, Appendix 10
ii.	G.2, J.5.1, E.4.3
iii.	G.2 - posters on sirens - No parks in Geauga EPZ
iv.	E.4.3, G.2, G.3
v.	Not Required
G.2	
i.	G.3, PIO SOG
ii.	N/A - Licensee Responsibility
iii.	N/A - Licensee Responsibility

Appendix 23

Revision 28
January 2022

Planning Standard	Locations
iv.	G.3, PIO SOG
G.3	
i.	G.3, PIO SOG (Part 1)
ii.	G.3, PIO SOG
iii.	G.3, PIO SOG (Part 1)
iv.	G.3, PIO SOG (Part 2.A)
G.3.a	
i.	G.3
G.4	
i.	G.4
ii.	G.4, EPI
iii.	G.4, PIO SOG (Part 2, PIO Liaison Section B).
iv.	G.4
G.5	
i.	N/A - Licensee Responsibility
ii.	N/A - Licensee Responsibility
iii.	N/A - Licensee Responsibility
H	
H.6	
i.	H.2, Appendix 13
ii.	H.3, DES Agency SOG (Parts A, B, C & D)
iii.	H.2.2.
iv.	H.2.3
v.	H.2.2.
vi.	N/A - Not Required
H.9	
i.	N/A - State Responsibility
ii.	N/A - State Responsibility
H.11	
i.	N/A - State Responsibility
ii.	N/A - State Responsibility
H.11.a	
i.	N/A - State Responsibility
H.11.b	
i.	N/A - State Responsibility
ii.	N/A - State Responsibility
iii.	N/A - State Responsibility
H.12	
i.	H.4, Appendix 14, FD-Care Center and FD-EWDC SOGs (Att 5).
ii.	H.4, Appendix 14, FD-Care Center and FD-EWDC SOGs (Att 5).
H.13	
i.	N/A - State Responsibility
ii.	N/A - State Responsibility
iii.	N/A - State Responsibility

Appendix 23

Revision 28
January 2022

Planning Standard	Locations
I	
I.2	
i.	N/A - State Responsibility
ii.	N/A - State Responsibility
I.5	
i.	N/A - State Responsibility
ii.	N/A - State Responsibility
I.6	
i.	N/A - State Responsibility
ii.	N/A - State Responsibility
iii.	N/A - State Responsibility
iv.	N/A - State Responsibility
v.	N/A - State Responsibility
vi.	N/A - State Responsibility
vii.	N/A - State Responsibility
viii.	N/A - State Responsibility
ix.	N/A - State Responsibility
x.	N/A - State Responsibility
xi.	N/A - State Responsibility
I.7	
i.	N/A - State Responsibility
ii.	N/A - State Responsibility
iii.	N/A - State Responsibility
I.8	
I.8	N/A - State Responsibility
ii.	N/A - State Responsibility
iii.	N/A - State Responsibility
iv.	N/A - State Responsibility
v.	N/A - State Responsibility
vi.	N/A - State Responsibility
vii.	N/A - State Responsibility
I.9	
i.	N/A - State Responsibility
I.10	
i.	N/A - State Responsibility
ii.	N/A - State Responsibility
J	
J.2	N/A
i.	N/A - Lake County Only
ii.	N/A - Lake County Only
iii.	N/A - Lake County Only
iv.	N/A - Lake County Only
J.6	
i.	N/A - Licensee and State Responsibility

Appendix 23

Revision 28
January 2022

Planning Standard	Locations
ii.	N/A - Licensee and State Responsibility
iii.	N/A - Licensee and State Responsibility
J.7	
i.	J.2, J.3
ii.	J.2, J.3
iii.	Appendix 2
J.8	
i.	J.8, Appendix 2
J.8.b	
i.	J.8, Appendix 2
ii.	J.8, Appendix 2
iii.	J.8, Appendix 2
iv.	J.8, Appendix 2
v.	J.8, Appendix 2, Sheriff SOG (Section C of Law Enforcement Coord).
J.9	
i.	N/A - Licensee and State only
J.10.a	
i.	Appendix 2, EPI (Appendix 10)
J.10.b	
i.	Appendix 2, 15
J.11	
i.	J.2, J.3, J.4, J.5
ii.	J.2, J.3, J.4, J.5
iii.	J.2, J.3, J.4, J.5
iv.	J.2, J.3, J.4, J.5
J.11.a	
i.	E.4.3, J.4, J.5.1, J.5.5, J.5.6
ii.	E.4.3, J.5.1
iii.	E.4.1, E.4.2, E.4.3, E.4.4, E.4.5, E.4.6, Appendix 10
iv.	E.4.3, J.5.1., DES Agency SOG (Section D)
v.	J.4, J.5.1, J.5.5, Thompson FD SOG (Part 2.B TSA Staging Area).
vi.	J.5.1, Engineer/Transportation Officer SOG (Section B).
J.11.b	
i.	I.2, J.2.1, J.3, J.6, K.9
ii.	I.2, J.2.1, J.3, J.6, K.9
iii.	I.2, J.6, j.9, K.9
iv.	N/A - State Responsibility
v.	N/A - State Responsibility
vi.	I.2, J.6, K.9
J.11.c	
i.	J.8, Appendix 2

Appendix 23

Revision 28
January 2022

Planning Standard	Locations
ii.	J.5.1, J.5.2, Appendix 16, Sheriff SOG (Law Enforcement Coord Section B).
iii.	J.5.1, Engineer/Transportation SOG (Section B).
J.11.d	
i.	J.5.3, J.5.5, J.5.6, Appendix 17, 19
ii.	J.5.4, Appendix 18, 19, 20
iii.	J.5.4
iv.	J.5.3, J.5.6
v.	J.5.4, J.5.5, Appendix 18, 19, 20.
vi.	J.5.3, J.5.5, J.5.6, Appendix 17, 19
J.11.e	
i.	J.5.2, J.5.4, Appendix 4, 16 and 17
ii.	J.5.2, J.5.4, Appendix 4, 16 and 17
iii.	Appendix 16, 17, Sheriff SOG (Section B of Law Enforcement Coord)
iv.	J.5.2, Engineer/Transportation Officer SOG (Section C).
v.	J.5.2, Sheriff SOG (Part 2 Access Control Officer).
vi.	Sheriff SOG (Section C Law Enforcement Coordinator).
J.11.f	
i.	J.5.2, Engineer/Transportation Officer SOG (Section C)
ii.	J.5.2, Engineer/Transportation Officer SOG (Section C)
iii.	J.5.2, Engineer/Transportation Officer SOG (Section C)
J.11.g	
i.	Appendix 7, School Services Representative SOG Part 1
ii.	Appendix 7, School Services Representative SOG Part 1
iii.	School Services Representative SOG Part 1
J.12	
i.	J.2.b
ii.	N/A - State Responsibility
iii.	N/A - State Responsibility
iv.	N/A - State Responsibility
v.	N/A - State Responsibility
vi.	N/A - State Responsibility
vii.	N/A - State Responsibility
viii.	N/A - State Responsibility
ix.	N/A - State Responsibility
x.	N/A - State Responsibility
xi.	N/A - State Responsibility
J.13	
i.	J.5, J.5.5

Appendix 23

Revision 28
January 2022

Planning Standard	Locations
ii.	K.6, FD-Care Center SOG
iii.	K.7, Appendix 21, FD-Care Center SOG (Att 5)
iv.	K.7, Appendix 21, FD-Care Center SOG (Att 5)
v.	J.5.4, J.5.5, American Red Cross SOG (Section C Shelter Manager)
J.14	
i.	M.6, M.7
ii.	M.6, M.7, Geauga EOP Annex I
J.14.a	
i.	M.6, M.7, Geauga EOP Annex I
ii.	M.6, M.7, Geauga EOP Annex I
iii.	E.4.
J.14.b	
i.	N/A - State Responsibility
ii.	N/A - State Responsibility
J.14.c	
i.	M.4.2, M.4.3
ii.	N/A - State Responsibility
J.14.d	
i.	M.4.3
ii.	M.4.3
iii.	M.6, M.7
iv.	M.6, M.7
J.14.e	
i.	M.6, M.7
J.14.f	
i.	M.6, M.7
ii.	M.6, M.7
K	
K.2	
i.	K.5, Appendix 21
ii.	K.5, Rad Officer SOG (Section C)
iii.	K.5, Rad Officer SOG (Section C)
K.2.b	
i.	K.5, Appendix 21, Rad Officer SOG (Section C)
ii.	K.5, Rad Officer SOG (Section C)
iii.	K.5, Rad Officer SOG (Section C)
iv.	K.5
v.	K.5, Appendix 21
K.3	
i.	N/A - State Responsibility
ii.	N/A - State Responsibility
iii.	K.2
iv.	K.2, K.4, K.9
v.	K.4, Rad Officer SOG (Section C)

Appendix 23

Revision 28
January 2022

Planning Standard	Locations
vi.	K.4, Attachment 12 in all SOGs that have Dosimetry Coordinators
K.3.a	
i.	K.4
ii.	K.3, K.4
iii.	K.3
iv.	K.3
v.	K.3, Rad Officer SOG (Section C)
K.4	
i.	K.6, K.7, Appendix 18, 21
ii.	K.7, Appendix 21, FD-Care Center SOG (Att 5)
iii.	Appendix 18
iv.	K.8, FD-Care Center and FD-EWDC SOGs (Att 5)
v.	N/A State Responsibility
vi.	K.7, Appendix 14
vii.	K.7, K.8, FD-Care Center and FD-EWDC SOGs (Att 5)
viii.	K.7
ix.	K.6, K.7, Appendix 21, FD-Care Center and FDEWDC SOGs (Att 5)
x.	K.6, K.7
xi.	K.6, K.7, K.8
L	
L.1	L.2
i.	N/A - Lake County Only
ii.	N/A - Lake County Only
iii.	N/A - Lake County Only
iv.	N/A - Lake County Only
L.3	
i.	N/A - State Responsibility
L.4	
i.	L.3, Fire-EMS Officer SOG (Section C)
ii.	L.3, Fire-EMS Officer SOG (Section C)
iii.	L.3, Fire-EMS Officer SOG (Section C)
iv.	L.3, FD-Care Center and FD EWDC SOGs (Att 34)
v.	L.3, FD-Care Center and FD EWDC SOGs (Att 34)
vi.	L.3, FD-Care Center and FD EWDC SOGs (Att 34)
vii.	L.3, FD-Care Center and FD EWDC SOGs (Att 5)
M	
M.1	
i.	M.6, Appendix 4, 5
ii.	M.6, M.7
iii.	M.4.3
iv.	M.6, M.7
M.1.b	
i.	M.6, M.7

Appendix 23

Revision 28
January 2022

Planning Standard	Locations
ii.	M.6, M.7
iii.	J.5.2, J.5.4, Appendix 4, 16, 17
iv.	M.6, M.7
v.	M.6, M.7
vi	M.6, M.7
M.4	
i.	M.6, M.7
ii.	M.6, M.7, Part 2 - Relocation, Reentry, Return section of Commissioners and EMA Director SOGs
iii.	M.6, M.7, Part 2 - Relocation, Reentry, Return section of Commissioners and EMA Director SOGs
iv.	M.6, M.7, Part 2 - Relocation, Reentry, Return section of Commissioners and EMA Director SOGs
M.5	
i.	M.6, M.7, Part 2 - Relocation, Reentry, Return section of Commissioners and EMA Director SOGs
ii.	M.6, M.7, Part 2 - Relocation, Reentry, Return section of Commissioners and EMA Director SOGs
iii.	M.6, M.7, Part 2 - Relocation, Reentry, Return section of Commissioners and EMA Director SOGs
M.6	
i.	M.6, M.7, Part 2 - Relocation, Reentry, Return section of Commissioners and EMA Director SOGs
ii.	M.6, M.7, Part 2 - Relocation, Reentry, Return section of Commissioners and EMA Director SOGs
M.7	
i.	N/A - State Responsibility
ii.	N/A - State Responsibility
iii.	N/A - State Responsibility
M.8	
i.	N/A - State Responsibility
ii.	N/A - State Responsibility
N	
N.1	
i.	N.2
N.1.a	
i.	N.5, N.6
N.1.b	
	N.6, DES Agency SOG
N.2	

Appendix 23

Revision 28
January 2022

Planning Standard	Locations
i.	N.2
N.2.a	
i.	N.2
ii.	N.2
N.2.b	
i.	N/A - State Responsibility
ii.	N/A - State Responsibility
iii.	N/A - State Responsibility
N.3	N.2, N.4
i.	N.2
ii.	N.2
N.3.a	
i.	N.2
ii.	N/A - Licensee Responsibility
N.3.b	
i.	N/A - Licensee Responsibility
N.3.c	
i	N/A - Licensee Responsibility
N.3.c.1	
i.	N.2
N.3.c.2	
i.	N.2
N.3.d	
i.	N.2
ii.	N.2
N.4	
i.	N.2
N.4.b	
i.	N/A - Lake County Only
N.4.c	
i.	N/A - State Responsibility
N.4.d	
i.	N/A - State Responsibility
N.4.e	
i.	N/A - State Responsibility
ii.	N/A - State Responsibility
N.4.f	
i.	N.3
ii.	N.3
O	
O.1	

Appendix 23

Revision 28
January 2022

Planning Standard	Locations
i.	O.2, CTP "Comprehensive Training Program for the Radiological Emergency Response Plans of Ashtabula, Geauga, and Lake Counties".(CTP)
ii.	O.3,O.4, O.5, CTP
iii.	O.3,O.4, O.5, CTP
iv.	O.2, O.5, CTP
v.	O.4, O.5, CTP
vi.	O.4, O.5, CTP
v.ii.	O.7, CTP
viii.	O.4, O.5, CTP
P	
P.1	
i.	P.2, O.2, O.4, O.5, CTP
ii.	P.2, O.2, O.4, O.5, CTP
P.2	
i.	P.2, O.4, O.5, CTP
P.3	
i.	P.2, P.3
P.4	
i.	P.3
ii.	P.3, RERP Revision Page
iii.	P.3, RERP Revision Page
iv.	P.3
v.	P.3
P.5	
i.	P.3, Appendix 4
ii.	Distribution page, P.3
iii.	P.3
P.6	P.4, Appendix 21
i.	P.4, Appendix 22
ii.	P.4, Appendix 22
P.7	Appendices List, Appendix 21
i.	Appendix 22
ii.	Appendix 22
P.8	Table of Contents, Appendix 22
i.	Table of Contents
ii.	Appendix 22
P.10	P.3, Ashtabula EMA SOG
i.	P.3, DES Agency SOG (Section D).